



Barts Guild

Friends of St Bartholomew's Hospital

since 1911

One Hundred and Seventh Annual Report and Accounts

2018 – 2019



The Princess Alice Garden has undergone considerable refurbishment involving tree work, flower beds, planters, reconditioned benches and new stone furniture. Well worth a visit!



Barts Guild

Friends of St Bartholomew's Hospital since 1911

Annual Report and Accounts 2018-2019

Contents

The Guild of the Royal Hospital of St Bartholomew	2
Report of the Trustees	3
Our Chairman's letter	14
Obituaries	15
Minutes of the Annual General Meeting 2018	16
Financial Statements 1 April 2018 to 31 March 2019	20
Report of the Honorary Treasurer ...	20
Independent Examiner's Report ...	21
All Funds Year ended 31 March 2019 ...	22
Balance Sheet ...	23
Notes to the Accounts ...	24
Guild Members and Volunteers 2019	34
Our Corporate Supporters	

www.bartsguild.org.uk

The Guild wishes to express grateful thanks to TFW Printers (sales@tfwprinters.co.uk) for their help in producing this Annual Report.

Photography: Neil Anderson, Bob Cooper, Lesley Evans, Patrick Jennings, Phil Moss, Samantha Philpott-Jones, Dr Andrew Smith, Hilary Tarr

THE GUILD OF THE ROYAL HOSPITAL OF ST BARTHOLOMEW
(also known as Barts Guild)

Registered Charity No 251628

Affiliated to ATTEND – Enhancing Health and Social Care, locally

PATRON

HRH The Duke of Gloucester KG GCVO

PRESIDENT

Mrs Ann Wickham

VICE-PRESIDENTS

The Lady Mayoress

Mrs Margaret Gillett

Mrs Daphne Hamilton Fairley OBE

Mrs Pauline Hirst

Professor Christopher Hudson

Mrs Mary Kelsey-Fry

Mrs Mary McNab Jones

Lady Percival

Mrs Alison Shepherd

Dr Audrey Tucker

OFFICERS OF THE GUILD

during the period April 2018-March 2019

Chairman

Mr Patrick Jennings

Vice-Chairman

Sir Marcus Setchell KCVO

Honorary Secretary

Mrs Jenny Jeyarajah

Honorary Treasurer

Mr Keith Bottomley CC

COMMITTEE OF MANAGEMENT
during the period April 2018-March 2019

Ordinary members (elected)

Mr James Ballinger

Mr Steve Bench

Ms Belinda Dee

Ms Lesley Evans

Mr David Frank

Mr Chris Hayes

Ms Valeria Locatelli

Mr Ian McDowell

Mrs Wendy Mead OBE CC

Dr Andrew Smith

Mr Adrian Stirrup

Mrs Hilary Tarr

Mrs Lynne Warnock

Miss Niamh Whelan

Co-opted members

Miss Lorna Glace, Grants Co-ordinator

Mr Michael Hayden

Mr Chris Hayward

Ms Jan O'Neill

Mr Andrew Phillips

Miss Jackie Roe, Princess Alice Garden Co-ordinator

Those with other executive responsibilities or invited to attend meetings

Mrs Thasveer Brar, Administrator

Miss Stella Cawker, Shop Manager

Mrs Elizabeth Clark, Admin. Support (*from February 2019*)

Mrs Sue Gilbert, Administrator (*until March 2019*)

Mr Phil Moss, Membership Secretary, IT and Website Co-ordinator

Report of the Trustees

Reference and administrative details of the charity, its trustees and advisers for the year ended 31 March 2019

Trustees

Mr Patrick Jennings	Chairman		
Sir Marcus Setchell KCVO	Vice-Chairman	Reappointed 25.10.18	
Mrs Jenny Jeyarajah	Honorary Secretary	Reappointed 25.10.18	
Mr Keith Bottomley CC	Honorary Treasurer		
Mr James Ballinger		Mr Ian McDowell	Reappointed 25.10.18
Mr Steve Bench	Appointed 25.10.18	Mrs Wendy Mead OBE CC	
Ms Belinda Dee		Dr Andrew Smith	Reappointed 25.10.18
Ms Lesley Evans		Mr Adrian Stirrup	
Mr David Frank		Mrs Hilary Tarr	
Mr Chris Hayes		Mrs Lynne Warnock	
Ms Valeria Locatelli	Reappointed 25.10.18	Miss Niamh Whelan	

Charity Registered Number: 251628

Address of principal office

St Bartholomew's Hospital
West Smithfield
London EC1A 7BE

Independent Examiner

Blue Spire Limited
Cawley Priory
South Pallant
Chichester PO19 1SY

Bankers

National Westminster PLC
P O Box No159
332 High Holborn
London WC1V 7PS

CCLA Charity Accounts
Senator House
85 Queen Victoria Street
London EC4V 4ET

Structure, governance and management

Structure of the charity

Barts Guild is an Unincorporated Association charity. Its governing document is its Constitution which was revised, agreed and adopted by the Guild's Management Committee, the Guild's membership and the Charity Commission in November and December 2013. It was further amended, agreed and adopted in October 2018. In recent times the governing document has been updated in 2000, 2002, 2013 and 2018. (See also website www.bartsguild.org.uk.)

Five meetings of the Management Committee (MC) of trustees take place during the year. In addition, a number of sub-committees take the Guild's activities forward in the following areas: Grants; Finance and Accounts; Investments; Membership; Fundraising; Publications and Publicity; IT and Website; Shop and Business.

Recruitment and appointment of new trustees

The charity in general meeting shall elect the officers and the other trustees. The trustees may appoint any person who is willing to act as a trustee. The number of trustees shall not be less than three but (unless otherwise determined by a resolution of the charity in general meeting) shall not be subject to any maximum. Any member or volunteer can be nominated for potential trusteeship.

Nominees for trusteeship/members of the Management Committee are interviewed by the Chairman, sometimes with the Hon Secretary; two referees are required in every case and nominations are agreed by the MC before being proposed for election at the AGM. In its trustees the Committee looks for areas of expertise important to the modern charity (e.g. law, finance, IT) and/or practical applications to help the Guild

in its day to day work in the shop and hospital trolley services and other activities. In a similar fashion trustees can also be removed by the MC.

Risk assessment

The Management Committee (MC) has assessed the major risks to which the charity may be exposed and is satisfied that systems are in place to manage exposure to the risks. The categories of risk surveyed cover: governance; operations; finance; external environment; compliance. Some examples of risks include: the ability to sustain the needed level of volunteers and the current level of income, a fall in investment values and returns, reputational risks and unforeseen changes in the operation of the NHS.

These risks are mitigated by active management by the MC and its sub-committees, close consultation with Barts Health NHS Trust Voluntary Services, careful review of investments and monitoring of the professional investment advisers, and liaison at board and senior management level with both Barts Hospital and Barts Health NHS Trust. In addition, full compliance was assured with the General Data Protection Regulation (GDPR) introduced on 25 May 2018.

Objectives and activities

The objects of the Guild are to help the Royal Hospital of St Bartholomew by providing:

- **By personal service and by provision from the Charity's funds, such amenities for the patients and staff as would not be available to them under the National Health Service;**
- **Such other charitable assistance to the Hospital, its patients, former patients, staff, students and others involved with the affairs of the Hospital as the trustees may determine.**

The main activities undertaken by the Guild to carry out these objects for the public benefit are:

- running a general and souvenir shop as an amenity for patients, staff and visitors;
- providing a trolley service for inpatients, selling newspapers, toiletries, confectionery and convenience items;
- making grants for the provision of facilities on wards for patients and staff;
- funding the purchase of clinical equipment;
- maintaining the Princess Alice Garden for the comfort and enjoyment of patients, visitors and staff.

In relation to all the Guild's activities we have paid due regard to the guidance published by the Charity Commission concerning public benefit.

Achievements and performance

Shop services

Apart from legacies, donations and investments, the Guild's chief recurrent income is generated by the shop and trolley service, the latter to hospital wards. The shop's continuing advantages of a central location in the heart of the King George V block, where most of the patients and clinics are based, and the excellent commitment of our shop and trolley volunteers, have underpinned a very satisfactory stream of income and sales in recent times.

Shop income was £170,369 net of VAT (last year: £144,328). This was a strong performance. The energy and commitment of the whole shop team kept the service progressing extremely well, aided too by the Shop & Business sub-committee.

The attractive and welcoming refitting of the shop's interior and facility in 2017 continues to contribute notably to the shop's custom and popularity.

Information technology

The new website launched in May 2017 has greatly increased the Guild's online capability for new members to join, existing members to renew, for purchasing souvenirs, receiving donations and grant requests as well as providing news, notice of events and charity information.

Membership

Current membership of the Guild stands at approaching 500 members at time of writing, almost 200 of them being subscription members and/or volunteers. There continues to be considerable interest in, and take-up of, the offer of free Guild membership to students of Barts and The London School of Medicine and Dentistry (BLSMD). Almost 300 members are now students, about a third of them joining during the year under review. In return students may help, where practicable, with Guild activities, and have greatly assisted us in recent times with much appreciated donations from their RAG Week. But the chief purpose of the association is to attract the interest of a new generation of practitioners who may continue to support the Guild long after their student days have ended. The Guild, too, offers financial support over several coming years for some educational needs of BLSMD students via the generous donation of Mrs Penny Wainwright and her family.

Grants

A total of £33,439 was spent on some 40 grants to the Hospital during the year. This expenditure is in the broad plane of the target set by the MC for annual grants currently during an extended period when the Guild has also made significant non-recurrent investment, for present and future, in a refurbished shop, an enhanced website, and the renovation of the Princess Alice Garden.

Nearly 60% of the above grants' expenditure supported patients' comforts and purchase of equipment for the hospital. The following categories show the rounded percentage breakdown of money spent. [i] Patients' comforts (some of which will also benefit staff and patients' visitors): 30%. These included, for example, funding for needs of very ill patients and their families, furniture for a relatives' room and a large Christmas tree. [ii] Hospital equipment purchase, especially an echocardiogram and noise-reducing equipment: 26%. [iii] Educational programmes/courses/study occasions for staff: 16%. [iv] Conference/seminar attendance for staff: 12%. [v] Support for students/elective grants: 10%. [vi] Funding for hospital events: 6%. The Guild recognises the importance of maintaining the great knowledge of Barts Hospital staff through their participation in conferences and fulfilment of study opportunities, particularly at a time of such pressure on NHS core funds.

In addition, the exceptional expenditure on the refurbished Princess Alice Garden, on which £60,750 was spent in 2018-19, is included as a grant for this year, being a major gift to the hospital. Thus total expenditure on grants amounted to £94,189. A full list of grants awarded is contained in this Report's Notes to the Accounts.

Estimated numbers of beneficiaries served directly by the Guild

The year saw very approximately 87,000 visits/customers/sales transactions to and in the shop and the wards' trolley service, by patients, visitors and staff. The average sales value of a transaction in the shop was a little above £2 and a little below £3 for the trolley service.

Estimated hours worked by the Guild volunteers during the year

During the year the Guild's active volunteers of all types, front line and management/support, contributed approximately 6,280 hours of work for the charity and, therefore, the hospital. Front line refers to the shop and ward trolley rounds, Monday-Friday, Saturday-Sunday; Management/support includes officers and other trustees and management committee meetings, sub-committee meetings and consultations, membership secretary, co-ordinators for grants, website, IT, Princess Alice Garden and the administrators.

Redesign and renovation of the Princess Alice Garden

This Garden was inaugurated by the Guild in 2004 and is maintained by the Guild for the hospital for the enjoyment and comfort of patients, staff and visitors. As reported in last year's future plans, the Guild has undertaken a significant enhancement and refurbishment of the Garden working with the freely given counsel of an internationally regarded garden designer.

The undertaking has been facilitated by a generous bequest received by the Guild in 2018. Initial work was accomplished before the end of 2018-19 and the project completed later in 2019. Apart from the immediate benefit which the enhanced Garden brings, it is also a contribution towards the celebration of Barts Hospital when it achieves its 900th anniversary in 2023. It is envisaged that the new Garden will be visited formally by the Guild's Patron, HRH The Duke of Gloucester, in September 2019.

Financial review

The Financial Statements are set out in this Annual Report. The salient features of financial performance and resource are outlined in the Hon. Treasurer's Report.

The charity's income for the year was £351,631 (2017-18: £189,882). Investment income totalled £15,173 (2017-18: £14,677). The Guild's total funds are £650,382 (2017-18: £549,834). A substantial legacy of £140,000 was received from the estate of Mr William Lugg. The treasury responsibility and financial oversight are undertaken most capably by Keith Bottomley CC as Hon. Treasurer and Hilary Tarr as Assistant Treasurer/Bookkeeper, while several other trustees also have wide financial experience.

Reserves Policy

Our policy for the financial reserves is that we should endeavour to hold sufficient to cover at least a year's expenditure on shop-related and other expenses, together with the current aim of spending about £25,000 to £30,000 per year on grants, or somewhat more if needs prevail. The outlay on the Princess Alice Garden this year (with some further funding to come in 2019-20) is regarded as exceptional but the new Garden will benefit the hospital for many years to come.

Therefore the current reserves are well in excess of this level. We are conscious that in recent years the charity's financial position has been much enhanced by the receipt of some substantial legacies and improved turnover in the relocated shop. We believe that the current financial standing of the charity will enable us to further develop and to expand our grant-giving ability to help the NHS Trust. Based on the current level of its reserves, the charity is well able to meet its projected obligations and liabilities and has no uncertainty over its continuing status as a 'going concern' as at the signing date.

Plans for future periods

The trustees examine and consult on future needs and issues, mindful of being responsive to changing patient needs and hospital developments. Over the next five-year period we aim to:

- enlarge the range of shop stock, provided that space permits and is supported by our continuing review of stock policy;
- consider how we might facilitate online pre-ordering for some categories of shop goods (including consideration – eventually – of orders from inpatients in wards, especially if there are suitable advances in technology);
- raise the level of grants (provided that the financial position allows through shop income, improved fundraising, investments and bequests: for example, investment income in 2018-19 has contributed well to the level of grants made, not including the Princess Alice Garden);
- increase membership numbers, both subscription members and active volunteers, and including aspiration to increase the number of our corporate supporters.

Maximising the website's capacity is important in helping with several of these initiatives.

Support

Barts Health NHS Trust continues to be greatly supportive of its oldest service-providing volunteer charity. We are also very appreciative of the support for and interest in the Guild of our Royal Patron HRH The Duke of Gloucester and his officials.

The Guild always appreciates the interest of staff of commercial companies that have expressed support for us. In recent years and again during this year, the Guild is especially grateful for the financial sponsorship and support provided by Saunderson House Limited.

Approved by the trustees on 4 July 2019 and signed on their behalf



Patrick Jennings
Chairman

Update for 2018-2019

The Annual Report focuses on the financial year 2018-2019 but in this section we also mention some activity in the current financial year, the better to bring Guild members and others as up to date as we can with the charity's developments. Some of this information will also have been noted in the autumn and spring editions of Barts Guild News, text of which is also available on the Publications page of the Guild website.

Trustees and Management Committee (MC) members

Appointed as a trustee at the 2018 AGM was Steve Bench who oversees the smooth running of the Guild Shop and its stock levels. Steve has been a Guild Volunteer for a decade and chairs the Shop & Business Sub-committee. In his earlier Guild volunteering he reorganised the service and stock of the formerly separate souvenir shop. His fundraising long-distance bicycle rides have also raised much appreciated money for the Guild. Before he began to concentrate on charitable involvements, Steve held senior positions at British Gas.

At the Guild's 2019 AGM, Patrick Jennings will step down as Guild Chairman and Sir Marcus Setchell will also step down as Vice-Chairman. The Chairmanship will be taken on by Valeria Locatelli and Ian McDowell, serving as joint Chairs. Valeria and Ian know the Guild well, each having been trustees for the past four years. Keith Bottomley, the current Honorary Treasurer, will also take on the role of Vice-Chairman. Jenny Jeyarajah will step down as Hon. Secretary after nine years of tremendous service in this role, and will be succeeded by Lesley Evans, who again knows the Guild well having been a trustee for the past three years.

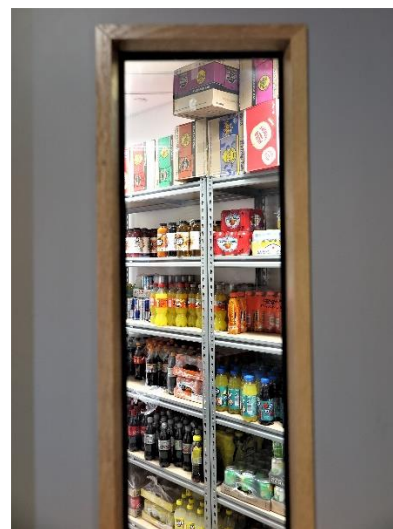
We thank Patrick, Marcus and Jenny for their considerable service to the Guild, and wish Valeria, Ian, Keith and Lesley the very best in their new roles.

Shop and trolley service



The provision of the shop and trolley service, benefitting staff, patients and visitors alike, continues to be a fine tribute to the dedication and hard work of our volunteers, shop manager and the regularly-meeting Shop and Business sub-committee.

The service has continued to do well during the year and has recently been enhanced by the addition of a mobile terminal which can be taken on trolley rounds, and a new shop credit card machine.



In July 2019 we were delighted to welcome Caroline Johnson as the temporary manager of the Guild Shop following the departure of her predecessor Stella Cawker. We thank Stella for her hard work and expertise in managing the shop since early in 2018. Caroline has 27 years of experience in the retail management sector, having spent 25 of those in the charitable side of retail. She has worked for many of the best-known charitable organisations in the UK, including The British Red Cross, Age Concern and PDSA. A recruitment process is currently underway to find a permanent Shop Manager. We always have a need for additional volunteers to help in the shop and undertake the trolley rounds where weekend shifts are difficult to fill.

Our online souvenir shop continues to be popular, with new product lines added during the year, and a project is underway to more accurately capture stock levels: an aim made easier by the new smart till that is in operation in the shop.

Grants

A full list of 2018-19 grants awarded to patients, staff and departments of the hospital is shown in the Notes to the Accounts. Below is a selection to illustrate the range of ways in which the Guild has been glad to assist:

- In the Radiotherapy department, patients sometimes need a change of clothing during or after their treatment. A grant from the Guild enabled a nurse and her colleague to purchase a considerable quantity of clothing which patients are able to change into and keep so that they can return home in a clean/dry state. Feedback from patients has been extremely appreciative and the Guild has been very pleased to contribute to practical care alongside the specialist treatment which patients receive in this department (see photo page 19).
- In this shared grant request with The Rahere Association and the Trust's Equality and Diversity team, Barts Guild supported an event aiming to highlight and celebrate some of Barts' female medical pioneers. The Guild also supported the refreshments for a number of other events, including a quality improvement workshop.
- Following a grant request from one of the palliative social care team, the Guild joined together with The Rahere Association to fund a seaside holiday for a patient with advanced cancer and her family. The family could not afford such a break otherwise, but they enjoyed a lovely week together at a specialist hotel suited to caring for those with medical needs.
- The Guild supported the attendance of a number of staff at medical conferences to showcase their work undertaken at Barts. One of these was a physiotherapist within the respiratory team. She attended the European Cystic Fibrosis Conference in Liverpool and presented her work, afterwards passing on her thanks to Barts Guild without whose support her attendance would not have been possible.
- The largest award during the year has been for the refurbishment of the Princess Alice Garden, and the resulting achievements have been designated as a grant and major donation to the hospital. A fuller report is contained later in this section.

Events

Smithfield 150

In August 2018, Smithfield Market hosted a two-day celebration of its 150th anniversary and the Guild was represented with a stall manned by Management Committee members and volunteers in shifts throughout the day. Passers-by stopped to talk and to look at the display of souvenirs and memorabilia including old prints of the hospital. It was rather a rather chilly and damp day so Guild sweatshirts proved a popular purchase! Visitors included past patients of Barts who told us their stories and there were an encouraging number of enquiries from prospective volunteers who took away some of the Guild's promotional material.



The Guild had a very successful day, thanks to the planning and hard work of Jenny Jeyarajah and helpers. Sales of souvenirs raised £400 on top of the donations via our collecting boxes.

AGM Guest Speaker

Our guest speaker in 2018 was Richard Slater, a former solicitor who is now a successful documentary filmmaker and photographer. Richard spent five years exploring London, photographing and filming video interviews with its inhabitants across the capital, which resulted in his fascinating book, 'People in London'. During his AGM talk, he spoke about the project and of his exploration of the astonishing diversity of the city, aptly reflected in microcosm in the staff and patients of Barts.

The photos below show the recorder ensemble which played charmingly for us, our stall selling Christmas cards, calendars and Christmas Concert tickets, and our President delivering her address to the assembled company of members.



Lord Mayor's Show



At the end of 2018 the Guild was told that, for the first time, it would have to pay to participate in the Lord Mayor's Show. However, following the skilful intervention of trustee Wendy Mead who emphasised to organisers the important links between the hospital and the City over the centuries, free entry for 2019 was secured. Our photo shows the happy band of volunteers who participated in November 2018.

A Celebration of Christmas

The Guild's 2018 'A Celebration of Christmas' took place in the Great Hall with the Barts and The London Music Society under their conductor Paul Edlin, with third year medical student Kaifeng Liang making her public debut as an accompanist. As always, the concert featured traditional and contemporary music beautifully performed and with opportunities for the audience to join in with favourite Christmas carols. The music was punctuated with readings on seasonal themes delivered by Guild favourites Frank Barrie and Ursula Mohan.

Generous sponsorship from our good friends Saunderson House ensured that 'A Celebration of Christmas' raised around £2,000 to further the Guild's work for patients, staff and visitors. We are most grateful for the continued support of Saunderson House and for the event's oversight, once again, of Jan O'Neill.



Volunteers' Christmas Party and Helpers' Party



In December, the Guild hosted its usual evening of food, drink and good company at the Lord Raglan Pub as a sincere thank-you to its volunteers for all their hard work.

In June, some Guild members attended Barts Health's annual volunteers' party which this year was themed 'Strictly Barts Volunteers', although the photo shows our group 'sitting out'!

International Nurses' Day



In May 2019 the Guild marked International Nurses' Day by sponsoring free ice cream for staff, patients and visitors at Barts.

International Nurses' Day marks the anniversary of Florence Nightingale's birth 199 years ago. The Day aims to raise awareness of the vital role played by nurses in healthcare across the world, often in difficult and dangerous circumstances, and to offer nurses information to support their continued learning.

Christmas at Barts Hospital

For Christmas 2018, in keeping with Guild tradition, volunteers wrapped 300 gift parcels to bring some Christmas cheer to in-patients. On Christmas morning, trustees of the Guild took the trolley around the hospital to also present gifts to staff on duty over the festive period. No Christmas at Barts would be complete without our Chairman's donning his Santa outfit, captured here!

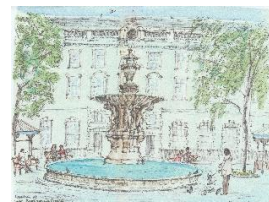
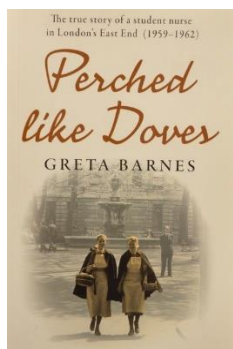
The beautiful Christmas tree which brought cheer to the Atrium in the KGV building was a gift from the Guild.



Guild website

The website which was redesigned and relaunched in May 2017 continues to enable online visitors to become a member, donate, purchase souvenirs, register volunteer interest, apply for grants, and keep up with the very latest news.

During the year we said farewell and thanks to Phil Moss who oversaw the most recent overhaul of the Guild's website and provided invaluable assistance in facilitating the refit of the Guild shop which culminated in a visit from our Royal Patron, HRH The Duke of Gloucester, in October 2017. Phil also served for a time as the Guild's Membership Secretary and we wish him all the best in his future endeavours.



Check out the expanded range of Guild souvenirs and memorabilia at www.bartsguild.org.uk

Guild Administrators

Joining Thasveer Brar as a Guild administrator this spring was Elizabeth Clark who combines her role with that of Treasurer of The Rahere Association. This is another grant-giving charity, working for the benefit of the Hospital's patients. Lizzie has been assisting the Guild team in administration duties including those in connection with the award of grants in which sphere she has useful experience. In March we said good-bye to Sue Gilbert and we thank her for her enthusiastic contribution and support as administrator over the previous year.

Engagement with Barts and The London Students' Association (BLSA)

From its early days, there have been strong links between Barts Guild and the medical school. Barts Guild continues to support medical students of the hospital with grants, administered via Barts and The London School of Medicine and Dentistry. These grants have been primarily supported by the generous donation of the Wainwright family in memory of Dr Laurence Cartledge, ophthalmologist at Barts, until his untimely death in 1956, aged 43. The Wainwrights have told us that Dr Cartledge himself would not have been able to study medicine if it was not for similar grants and support.

In the past year, the £1500 Cartledge Memorial Fund was conferred on a student in financial hardship with no recourse to other funds; this money went directly to support their living costs for food, prescriptions and travel.

The year's recipients of the Barts Guild Elective Grants were Amy Arnold and Rebecca John. These grants were established to support medical electives for students who would not otherwise be able to afford them. A medical elective is an important part of a medical student's journey, providing the opportunity to explore an area of interest or gain experience in a healthcare setting vastly different to the UK. Amy spent time in both urban and rural Zanzibar, Tanzania, focusing on paediatrics and family health. Rebecca spent her time in New Zealand where she worked with an NGO dedicated to supporting the health and rights of sex workers in the country. We thank Kate McFarlane in the medical school's finance office for her work in the administration of these grants.

Representatives of the Guild were invited again this year to join the academic procession at the medical school's 'Rites of Passage' graduation ceremony. This is an annual event celebrating the achievements of all medical and dental students on completion of their degrees.

There has been ongoing interest in student membership of the Guild, aided by the Guild's attendance at the 'London Week' celebrations, which commemorated 125 years of Barts and The London Students' Association.

Publications and Publicity

Calendar 2019

Once again we teamed up with Vital Arts for the 2019 Guild Calendar, which included images by artists whose work is currently on display at Barts. Vital Arts makes an invaluable contribution both to the patient environment and to the working environment at the Hospital.

Barts Guild News

Those in search of news and general information about the activities of the Guild have been, as ever, well-served by the twice-yearly *Barts Guild News*, edited by Jan O'Neill. You can read and download editions from the past few years on the Guild's website at www.bartsguild.org.uk/publications.

Princess Alice Garden

The Princess Alice Garden, which has long provided a peaceful haven for the tired and the troubled, has undergone a significant refurbishment during the past year. The Garden was originally named and developed to celebrate the 100th birthday of our late Royal Patron HRH Princess Alice, Duchess of Gloucester.

Acclaimed garden designer Mary Keen worked on the project, with her design aiming to create a "quiet green sanctuary" that is welcoming and has a rich diversity of beautiful plants. Garden contractors Rosebank Landscaping began work in February, taming overgrown trees to let more light into the garden and add new plantings of colourful acers, shrubs and perennial flowers that will ensure colour and interest throughout the year.

The wooden benches and planters have been rearranged, refurbished and restored to their natural colour. At the appropriate time of year, the planting will be completed with a Princess Alice rose. As a permanent memorial to her late husband John, Guild President Ann Wickham has provided a set of beautiful stone benches and a table.

The Guild would like to thank the Barts Health Trust Senior Management and Facilities teams, and Father Marcus Walker, the Rector of the Parish of Great St Bartholomew, for the support and encouragement they have given to the project.



Management Committee discussions

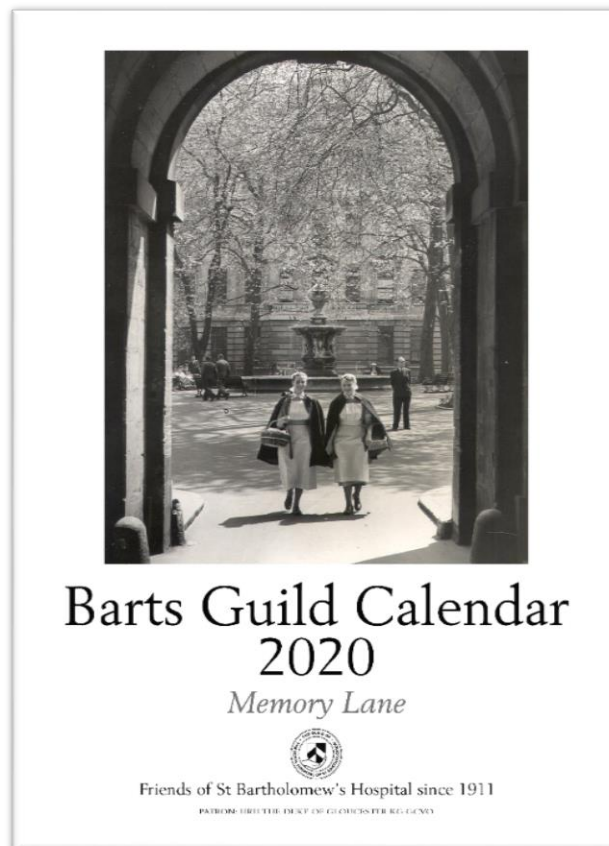
The work and progress of the Guild (currently with over 450 members and volunteers, including over 250 student members) and its sub-committees are overseen by the Management Committee, which also shapes policy and ensures the charity follows Charity Commission requirements in an increasingly regulatory age.

Following the 2018 AGM, the Management Committee needed to embark on the process of finding a new Chair, Vice Chair and Honorary Secretary as the current post-holders were due to retire in 2019. No sooner had we started than we had finished! It was extremely gratifying that the current trustees quickly stepped up to the mark and the Guild can look forward to a bright and exciting future under its new team which will inevitably bring forward many new ideas.

And finally ... In order to achieve all it does for Barts Hospital, the Guild is indebted to the help of so many. These include the administrative team at Barts Health, the volunteers who are the very heart of the Guild, the trustees in providing the framework enabling the Guild to meet its legal obligations amidst the myriad of regulatory requirements, those who donate to the Guild and of course the patients and staff of the hospital in giving us our charitable purpose.

The year 2023 will see the 900th anniversary of the founding of St Bartholomew's Hospital. The Guild, the Hospital's helpmate for over 100 years, will seek to play a full part in the celebration of this great occasion. Indeed we have already made a considerable contribution to this by the major refurbishment of the Princess Alice Garden which enhances the Hospital site as we prepare to laud this illustrious anniversary.

~~~~~



**The Guild's calendar for 2020 will be available to purchase at Guild events during autumn 2019, from the Guild shop and through the Guild's website**



## Our Chairman's letter



I am pleased to report that this has been another good year for the Guild.

We have faced the usual challenges of a busy active charity running a significant business and the huge contribution made by the Guild volunteers, trustees and Management Committee members cannot be understated.

The Guild's finances continue to be in good shape, with the most welcome investment income received by the Guild helping to fund the ever-growing grants awards.

The Guild Shop is prospering and whilst we wished our former Shop Manager well in her new charity venture, we were fortunate quickly to find a new manager who is settling down in a role that is central to the Guild's operations and to the welfare of the patients and staff of St Bartholomew's Hospital.

Perhaps one of the most noteworthy activities that has been occupying us over the past year has been the implementation of the refurbishment of the Princess Alice Garden. Following the improvement of the Guild's finances, it was felt that we could contribute to the work of the hospital by carrying out a major improvement to the Garden, which required fairly urgent repairs especially to a broken concrete plinth that looked likely to collapse completely at any moment.

At the time of writing this letter, we are planning a visit to the Garden by the Guild's Patron HRH The Duke of Gloucester with HRH The Duchess of Gloucester, and this promises to be a memorable day for the Guild and Barts Hospital.

Grants made by the Guild are a major activity. Whilst there is a notable spike in this year's grant awards due to the Princess Alice Garden refurbishment, our more general grants are progressing well and continue to be greatly valued by the hospital.

As I complete my three-year term as Guild's Chairman, I would like to say what a pleasure and honour it is to have been Chairman of this charity. I have met many inspiring and dedicated people giving so much of their time to others, as well as a few who have offered some interesting challenges.

I would like to thank the trustees and members of the Management Committee for all their support and for the huge amount of work that collectively they contribute to the work of the Guild.

Also, I wish to express my heartfelt thanks to all who work at Barts Hospital and here, I would like to thank especially the Senior Management Team. During my time as Chairman, they have been a rock of support and encouragement and we could simply not have achieved the Princess Alice Garden refurbishment and before that the Guild Shop refurbishment without them.

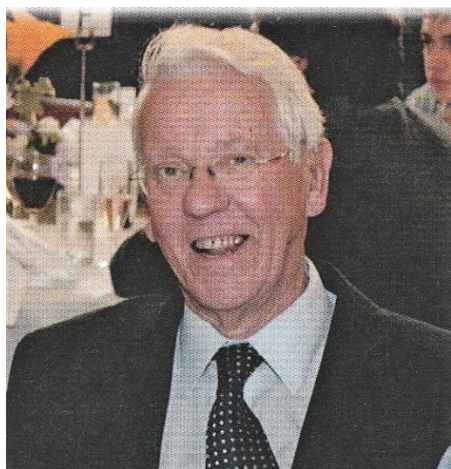
I shall miss you all in my role as Guild Chairman but I am sure that we will remain in contact.

As we welcome the dynamic new team of Valeria Locatelli and Ian McDowell as Co-Chairs, Keith Bottomley as Vice Chair and Lesley Evans as Honorary Secretary, I am sure that the future promises much for the Guild with endless new opportunities along the road ahead.

**Patrick Jennings**

# Obituaries

This year we were particularly saddened to learn of the deaths of two distinguished supporters of the Guild. Both began their careers as students at Barts.



**Professor James Malpas** died on 29 April 2019, aged 87.

James was one of the first medical oncologists in Britain and during his time at Barts developed the Department of Medical Oncology, where he led research and trained doctors to deliver pioneering new treatments for cancer. He specialised in paediatric oncology and was also Dean of Barts Medical College in 1969-72.

With his late wife Joyce (obituary in last year's Annual Report) he strongly supported the Guild, not least in our recent application for The Queen's Award for Voluntary Service. A man of considerable warmth and courtesy he was welcome wherever he went.

**Dr Audrey Tucker** died on 30 May 2019, aged 90.

A consultant radiologist, Audrey joined the Guild in 1987 and was Chairman from 2004 to 2007; during her chairmanship the Princess Alice Garden settled into the Guild's custodianship. Her high achieving career encompassed working at St Bartholomew's, Middlesex and Mount Vernon Hospitals. Among personal interests was her considerable knowledge of wine: she became a Master of Wine and chaired the Royal Society of Medicine's wine committee. Audrey was married to the late Dr Lewis Cannell, another notable radiologist in both the UK and Africa and a former gifted rugby union international, winning 19 caps for England from 1948 to 1957.



The Guild has also been informed of the death of the following two members:

**Mrs Joan Johnson** in January 2019

**Miss Ann Rose** in February 2019



# The Guild of the Royal Hospital of St Bartholomew



## ANNUAL GENERAL MEETING 2018

### MINUTES

of The Annual General Meeting of the Guild of the Royal Hospital of St Bartholomew,  
Thursday 25 October 2018 at 2pm in The Great Hall, St Bartholomew's Hospital

#### 1. Opening of the AGM

Mr Patrick Jennings, Chairman, welcomed all volunteers, members, committee members, guests and relatives to the Barts Guild Annual General Meeting 2018. The assembled company numbered approximately fifty attendees. Apologies had been received from ten members and friends of the Guild.

#### 2. President's welcome – Mrs Ann Wickham

Mrs Ann Wickham, President then welcomed Mrs Samantha Bowman, the Lady Mayoress, and Mrs Amanda Keaveny, Shrieval Consort, as special guests. Mrs Wickham also thanked everybody for the messages of support which she had received upon the death of her husband, Mr John Wickham, in October 2017. Mrs Wickham then gave the following address:

"If you entered Barts Hospital through the Giltspur Street entrance you might have noticed, on the right hand wall, the foundation stone laid by King Edward VII on 6 June 1904 to commemorate the new hospital buildings along Giltspur Street. The stone also commemorates Henry I's gift of the site to Rahere in 1123, and continues:

*'and ever since devoted to the relief of pain and the cure of disease among the poor of London and through the increase of knowledge in the medical art here attained in the alleviation of human suffering throughout the world'.*

These inspiring and germane words encapsulate the ethos of Barts Hospital and the compassion, expertise and hope which has been given to all the patients under its care for nearly 900 years. The words were written by Norman Moore (1847-1922), physician and historian of Barts Hospital. He was elected President of the Royal College of Physicians in 1918 and knighted in 1919. His wife Millicent founded the Guild in 1911. Today, Barts continues to be 'devoted to the relief of pain and cure of disease', and has a worldwide reputation as a national centre of excellence for cardiac and cancer care and for education and research.

This year we remember three particular anniversaries relevant to Barts and the Guild. The first of these, of which you are probably unaware, is the centenary of the publication of Sir Norman Moore's monumental 'History of St Bartholomew's Hospital' on 14th October 1918. It had taken him nearly thirty years to research and write. The event was celebrated with a tea party and a sponge cake decorated with chocolate apricots.

The second anniversary is the end of the First World War on 11th November 1918. Barts Hospital was a major casualty-clearing centre, together with a hospital in Camberwell which had been converted from a college (Vera Brittain: 'Testament of Youth'). The medical and nursing staff played a major role, both here and in France, treating the wounded soldiers. Several members of the medical staff lost their lives and are now commemorated on the memorial underneath the arch leading to the square. There is also a plaque on the wall of the East Wing listing the number of military casualties (5046) which had been treated from 1914 to 1919. The Guild, which had only started three years previously, also played a major role in caring for the injured soldiers both in Barts and in Camberwell. They also raised money for clothing and blankets and other essentials which were not provided by the War Office.

The third anniversary is that of the NHS which came into being on 5th July 1948. This 70th anniversary was well and truly celebrated with a sumptuous banquet in the Great Hall to say 'thank you' to seventy heroes of the NHS, and the guests included a cleaner and porter from Barts among the nurses and medical staff from across the British Isles. On 5th July, the Guild organised an ice-cream van to come into the square to distribute free ice-creams to all staff. The queue reached right around the square and the ices were much appreciated as it was a very hot day!

The BBC broadcast a service live from St Bartholomew the Less on 10th June. The service was led by Rev. Marcus Walker and the sermon was preached by the Bishop of London, The Rt. Rev. and Rt. Hon. Dame Sarah Mullally DBE, who had originally trained as a nurse. She talked about the 'birth pangs' of the NHS in 1948 and reminded us of the story of the Good Samaritan and that we should always recognise our neighbours and treat them as we would ourselves and care for their needs with love and compassion.

The role of each one of us, as Guild members, is to give to the patients of Barts and their families care, compassion and hope. They are our neighbours. Our logo is not just an image; it is a reality. We are both privileged and humbled to serve this great hospital. As John Betjeman wrote:

*'Over eight hundred years of compassion and care  
Have hallowed its fountain, stones and square.'*

This is the legacy which we too must pass on to our successors."

Following the President's Address, a representative of the Guild Volunteers presented flowers to the Lady Mayoress and Shrieval Consort. A representative of the Guild's Management Committee presented flowers to Mrs Wickham.

### **3. Chairman**

- a) The Minutes of the AGM held on 23 October 2017 were approved by the meeting as a correct record.
- b) Thanks were expressed to all those involved in the production of the Annual Report for 2017-18, which was also received by the meeting.
- c) Proposals had been circulated for the revision of the Guild's Constitution in four of its clauses. There being no questions from the floor, the following resolution was passed by the meeting:  
*'It is resolved that the Constitution of the Guild be amended with effect from 1<sup>st</sup> April 2019 to correspond to the draft produced to this meeting and signed for the purpose of identification by the Chairman.'*

### **4. Annual Report and Accounts 2016-17**

The Hon Treasurer, Mr Keith Bottomley CC, presented the statutory accounts for the 12 months to March 2018 and the Balance Sheet as at 31 March 2018, as laid out in the Annual Report 2017-18. The accounts had been reviewed by the Guild's Finance Committee and Management Committee, and approved by the Independent Examiner, Geoffrey Frost of Blue Spire Ltd.

The Hon Treasurer was pleased to report that the Guild's finances are in good health. Total expenditure exceeded total income by some £14,000 but this was after non-recurring costs of some £28,000 on the shop refurbishment and new website. Total charity funds at 31 March 2018 stood at just under £550,000.

Eighteen grants were made in the year totalling £23,457. The full annual income benefit of the investment strategy adopted in September 2016 is now being seen in these accounts, with investment income of almost £15,000 representing a yield of 3.6%. Shop sales were broadly in line with the prior year although they have increased noticeably since March 2018. The buoyancy of sales reflects the hard work of our Shop Manager, Stella Cawker, and all the volunteers for the shop and trolley service. Donations totalled £16,712, boosted by corporate donations and from Queen Mary Students' Union. Subscriptions were broadly in line with the prior year. The Guild is now liable for the shop business rates but these are being reimbursed by Barts NHS Trust. Having consolidated its main accounts, the Guild has now opened an interest-bearing account to generate an income on its cash balances.

The Hon Treasurer expressed thanks to the Assistant Treasurer and Bookkeeper, Hilary Tarr, for managing the day to day transactions and record-keeping for the Guild's finances. After a formal proposal, the meeting voted to adopt the accounts as presented.

## **5. Chairman - Election of Officers and Committee Members**

### **5.1 Officers**

On the recommendation of the Chairman and Committee of Management, the meeting approved the following: the annual re-election of Sir Marcus Setchell KCVO as Vice-Chairman and Mrs Jenny Jeyarajah as Hon Secretary of the Guild.

### **5.2 Members of the Committee of Management**

On the recommendation of the Chairman and Committee of Management, the meeting approved the following:

- the appointment as a Trustee of Mr Steve Bench for an initial period of three years;
- the re-election for a period of three years of Ms Valeria Locatelli, Mr Ian McDowell and Dr Andrew Smith.

## **6. Chairman's Report – Mr Patrick Jennings**

The Chairman gave a positive and encouraging report on the activities of the Guild over the past year. The shop and trolley service are widely appreciated by the community at Barts, due to the work and commitment of the shop team and volunteers who devote so much time to providing a friendly and efficient service.

Apart from activities connected with the shop and trolley service, a great deal of work goes on behind the scenes to progress the work of the Guild and its smooth running, and for this the Chairman expressed thanks to all trustees and volunteers for their expertise and diligence in a variety of fields.

The increase in the awarding of grants, as described in the Annual Report 2017-18, is greatly welcomed, and it is a privilege to make a direct and very important contribution to the lives of Barts' patients and staff. The Guild is indebted to Barts Health NHS Trust, the Senior Management Team at Barts Hospital and the Barts Charity as well as the Guild's corporate supporters for all their help and encouragement.

The Chairman thanked the recorder ensemble 'Sonority' for their tuneful contribution to the afternoon, to the raffle team and donors from E&Y, to the Barts catering team, and to all members and supporters of the Guild for contributing to and attending the AGM. Now in his final period as Chairman and Trustee, he looked forward to a busy and productive year ahead with the support of the Guild's unique team of trustees and volunteers.

## **7. Forthcoming events**

Lord Mayor's Show: Saturday 10 November 2018

Christmas Concert: Tuesday 4 December 2018 in the Great Hall

AGM 2019: Thursday 17 October

## **8. Presentation of Certificates by the Lady Mayoress, Mrs Samantha Bowman**

The Lady Mayoress presented long service certificates to Guild volunteers as follows:

**10 years:** David Frank, Steve Bench

**20 years:** Jackie Roe

**30 years:** Hilda Fazzani

### **Address by the Lady Mayoress, Mrs Samantha Bowman**

Mrs Bowman expressed her great pleasure in attending the AGM and renewing contact with the Guild. She had been glad to read the Annual Report, to hear about all the Guild's activities and the immense contribution of volunteers, and was impressed by the hours which they dedicated to the charity. She recognised that the Guild contributes a great deal to the Hospital in a variety of ways, and wished the Guild all the very best for future years.

After the address, the Chairman expressed his thanks to the Lady Mayoress on behalf of all present.



**9. Any other business – Mr Patrick Jennings**

There was no other business to discuss, and the formal part of the AGM was declared closed.

**All then enjoyed a talk from our Guest Speaker – Mr Richard Slater**

Mr Slater, a photographer, gave a most interesting talk in parallel with the content of his fascinating book: *“People in London: One photographer – Five Years – The Life of a City”*. His talk concentrated on the diversity of Londoners in respect of religion, drawing attention to the astonishing range which are practised within the London area. The talk was attractively illustrated with slides of colourful robes, costumes and festivals.

At the conclusion, Mr David Frank proposed a vote of thanks and the souvenir stall and the raffle were made available to members and guests.

~~~~~



A Barts Guild grant enabled the purchase of new clothing for patients in the Radiotherapy department; see report page 8

Report of the Honorary Treasurer

Report of the Honorary Treasurer for the year ended 31 March 2019



The year-end accounts for the 12 months to 31 March 2019 show the Guild's finances continuing in good health. They have been reviewed by the Finance and Accounts Committee and approved by the Management Committee at its meeting on 4 July 2019. Independent examination has been carried out by Blue Spire Ltd who have signed their report confirming that they have no concerns about our accounts.

In particular, the year reflects increased levels of service provided to Barts Hospital by the shop, the awarding of a higher level of grants, investment in the Princess Alice Garden and receipt of a significant legacy.

Total income, excluding unrealised gains on investments, exceeded total expenditure by £67,210 in the year. After a gain in the value of investments of £33,338 the total surplus for the year is £100,548. This takes into account the significant legacy of £140,000 from the estate of Mr William Lugg.

Some 40 grants were made in the year totalling £33,439 compared to £23,457 for the 12 months to 31 March 2018, an increase of 42%. In addition, an exceptional grant has been made of £60,750 to fund the Princess Alice Garden refurbishment. The total cost of these works is c. £70,000 with the balance to be reflected in next year's accounts. A grant of £2,429 was unpaid and has therefore been cancelled and written back into reserves. The Guild's investments and cash balances have generated income of £15,173.

Shop sales at £170,369 are 18% higher than the prior year. Gross profit margin has reduced from 35.7% to 30.0% resulting in a reduction in gross profit contribution of c. £10,000. Stock levels have doubled to £18,714, an increase of 122%. After expenses the shop generated a surplus of £5,000 broadly in line with the budget. Membership subscriptions are up 6% to £1,860 and fundraising income has almost doubled to c. £7,300. Other expenses have reduced to c £14,000 from c £33,000 with the website upgrade now complete.

The business rates of £5,941 have been fully reimbursed by Barts Health NHS Trust. The debtors figure of £4,580 includes income received in March and not banked until April as well as Gift Aid of £1,583 due from HMRC on qualifying membership subscriptions and Penny Wainwright's donation.

Creditors of £44,627 include shop salary, VAT and grants of £9,331 agreed but not paid at 31 March 2019. An amount of £23,973 was due but had not been paid at the year-end for Princess Alice Garden refurbishment and is also included in creditors.

The Guild's investments show a gain of £33,338 at the year end and have generated an income yield of 3.2% over the 12 months. £85,000 of free cash balances have been placed on a 12-month fixed deposit with Cambridge & Counties Bank at 1.6% gross which will generate income of £1,360. The deposit is protected under the Financial Services Compensation Scheme.

Total Charity Funds at 31 March 2019 were £650,382, all of which are unrestricted funds apart from £1,583 re Chris Davies legacy.

A Contingent Asset note has been added to the accounts at Note 20 regarding the John North Legacy. The charity has been named as a beneficiary of the estate and a reliable measurement of the legacy receivable is not available, therefore a contingent asset arises with an estimated value of £70,000. The amount and timing of this income will be dependent on the sale of the property held in the estate.

Finally, and most importantly, may I express my grateful thanks for all the hard work of Hilary Tarr, Assistant Treasurer and Bookkeeper. Hilary does a most excellent job. I do the easy bit and pull the accounts together from Hilary's very accurate records!

Keith Bottomley CC
Honorary Treasurer

Independent Examiner's Report to the Trustees of The Guild of the Royal Hospital of St Bartholomew

I report to the charity trustees on my examination of the accounts of the charity for the year ended 31 March 2019.

Responsibilities and basis of report

As the charity's trustees you are responsible for the preparation of the accounts in accordance with the requirements of the Charities Act 2011 ('the Act').

I report in respect of my examination of the charity's accounts carried out under section 145 of the Act and in carrying out my examination I have followed all the applicable Directions given by the Charity Commission under section 145(5)(b) of the Act.

Independent examiner's statement

Since the charity's gross income exceeded £250,000 your examiner must be a member of a body listed in section 145 of the Act. I confirm that I am qualified to undertake the examination because I am a member of The Institute of Chartered Accountants in England and Wales, which is one of the listed bodies.

I have completed my examination. I confirm that no material matters have come to my attention in connection with the examination giving me cause to believe that in any material respect:

1. accounting records were not kept in respect of the charity as required by section 130 of the Act; or
2. the accounts do not accord with those records; or
3. the accounts do not comply with the applicable requirements concerning the form and content of accounts set out in the Charities (Accounts and Reports) Regulations 2008 other than any requirement that the accounts give a 'true and fair view' which is not a matter considered as part of an independent examination.

I have no concerns and have come across no other matters in connection with the examination to which attention should be drawn in this report in order to enable a proper understanding of the accounts to be reached.



Geoffrey Frost BSc(Hons) FCA
Blue Spire Limited
South Pallant
Chichester
West Sussex
PO19 1SY

Date 18 July 2019

**THE GUILD OF THE ROYAL HOSPITAL OF ST BARTHOLOMEW
FINANCIAL STATEMENTS FOR THE YEAR ENDED 31 MARCH 2019**

All funds Year Ended 31 March 2019

		Unrestricted Funds	2018-19 Restricted Funds	Total	2017-18 Total Funds
	Notes	£	£	£	£
Income and Endowments from:					
Donations and Legacies	2	150,940	-	150,940	25,484
Charitable activities	3	170,369	-	170,369	144,328
Other trading activities	4	15,149	-	15,149	5,393
Investments	5	15,173	-	15,173	14,677
Total income		351,631	-	351,631	189,882
Expenditure on:					
Raising funds	6	5,324	-	5,324	5,852
Charitable activities	7	279,097	-	279,097	206,722
Total expenditure		284,421	-	284,421	212,574
Income excluding investments		67,210	-	67,210	(22,692)
Net gains on investments (unrealised)	11	33,338	-	33,338	8,574
Net income/(expenditure)		100,548	-	100,548	(14,118)
Transfers between funds		-	-	-	-
Net movement in funds	16	100,548	-	100,548	(14,118)
Reconciliation of funds:					
Total funds brought forward		548,251	1,583	549,834	563,952
Total funds carried forward		648,799	1,583	650,382	549,834

**THE GUILD OF THE ROYAL HOSPITAL OF ST BARTHOLOMEW
CONSOLIDATED FINANCIAL STATEMENTS FOR THE YEAR ENDED 31 MARCH 2019**

Balance Sheet as at 31 March 2019

	Notes	2018-19 £	2017-18 £
Fixed assets			
Investments	11	455,411	422,073
<i>Total investments</i>		<u>455,411</u>	<u>422,073</u>
Current assets			
Stocks	12	18,714	8,406
Debtors	13	4,580	5,079
Cash at bank and in hand	14	217,084	134,489
<i>Total current assets</i>		240,378	147,974
Liabilities			
Creditors: amounts falling due within one year	15	45,407	20,213
<i>Net Current Assets</i>		<u>194,971</u>	<u>127,761</u>
Total Net Assets		<u>650,382</u>	<u>549,834</u>
The Funds of the Guild of the Royal Hospital of St Bartholomew			
Restricted income funds	16	1,583	1,583
Unrestricted funds	16	648,799	548,251
Total charity funds		<u>650,382</u>	<u>549,834</u>

These financial statements have been prepared in accordance with the Financial Reporting Standard 102 SORP.

Approved by the trustees on 4 July 2019 and signed on their behalf



**Patrick Jennings
Trustee**



**Keith Bottomley CC
Trustee**

THE GUILD OF THE ROYAL HOSPITAL OF ST BARTHOLOMEW FINANCIAL STATEMENTS FOR THE YEAR ENDED 31 MARCH 2018

Notes to the Accounts

1. Accounting policies

General information, scope and basis of the financial statements

The Guild of the Royal Hospital of St Bartholomew is an unincorporated charity registered in England and Wales under a constitution with the charity number 251628. The address of the principal office is given in the charity reference and administrative details page and the nature of the charity's operations and principal activities are provided in the Report of the Trustees.

The charity constitutes a public benefit entity as defined by FRS 102. The financial statements have been prepared in accordance with Accounting and Reporting by Charities: Statement of Recommended Practice applicable to charities preparing their accounts in accordance with the Financial Reporting Standard applicable in the UK and Republic of Ireland (FRS 102) issued on 16 July 2014 (as updated through Update Bulletin 1 published on 2 February 2016), the Charities Act 2011 and UK Generally Accepted Practice as it applies from 1 January 2015.

The financial statements are prepared on a going concern basis under the historical cost convention, modified to include certain items at fair value. The financial statements are presented in sterling which is the functional currency of the charity and rounded to the nearest pound.

The charity has applied Update Bulletin 1 as published on 2 February 2016 and does not include a cash flow statement on the grounds that it is applying FRS 102 Section 1A.

Incoming resources

All incoming resources are included in the Statement of Financial Activities (SoFA) when the charity is legally entitled to the income after any performance conditions have been met, the amount can be measured reliably and it is probable that the income will be received.

For donations to be recognised the charity will have been notified of the amounts and the settlement date in writing. If there are conditions attached to the donation and this requires a level of performance before entitlement can be obtained, then income is deferred until those conditions are fully met or the fulfilment of those conditions is within the control of the charity and it is probable that they will be fulfilled.

For legacies, entitlement is the earlier of the charity being notified of an impending distribution or the legacy being received. At this point income is recognised. On occasion legacies will be notified to the charity; however it is not possible to measure the amount expected to be distributed. On these occasions, the legacy is treated as a contingent asset and disclosed.

Income from trading activities includes income earned from fundraising events and trading activities to raise funds for the charity. Income is received in exchange for supplying goods and services in order to raise funds and is recognised when entitlement has occurred.

Interest income is recognised using the effective interest method and is recognised as the charity's right to receive payment is established.

Resources expended

All expenditure is accounted for on an accruals basis and has been classified under headings that aggregate all costs related to the category. Expenditure is recognised where there is a legal or constructive obligation to make payments to third parties, it is probable that the settlement will be required and the amount of the obligation can be measured reliably. It is categorised under expenditure on charitable activities and includes grants to organisations and the cost of administering the activity of the charity.

Grants payable to third parties are within the charitable objectives. Where unconditional grants are offered, this is accrued as soon as the recipient is notified of the grant, as this gives rise to a reasonable expectation that the recipient will receive the grant. Where grants are conditional relating to performance then the grant is only accrued when any unfulfilled conditions are outside of the control of the charity.

Support costs are those that assist the work of the charity but do not directly represent charitable activities and include office costs, governance costs and administrative payroll costs. They are incurred directly in support of expenditure on the objects of the charity. Support costs are allocated to expenditure on charitable activities on the basis that this is the sole activity of the charity.

Governance costs are those incurred in the governance of the charity and primarily associated with the constitution and statutory requirements.

Employee benefits

When employees have rendered service to the charity, short-term employee benefits to which the employees are entitled are recognised at the undiscounted amount expected to be paid in exchange for that service.

VAT

The charity is registered for VAT and prepares returns currently under the Flat Rate Scheme for small businesses. On this basis costs are recorded inclusive of VAT within the SoFA, and income is reduced by the VAT payable at a rate of 4% within the SoFA.

Investments

Investments are recognised initially at fair value which is normally the transition price excluding transaction costs. Subsequently they are measured at fair value with changes recognised in 'Net gains/(losses) on investments' in the SoFA if the shares are publicly traded or their fair value can otherwise be measured reliably. Other investments are measured at cost less impairment.

Stocks

Stocks are stated at the lower of cost and estimated selling price less costs to complete and sell. Cost includes all costs of purchase, costs of conversion and other costs incurred in bringing stock to its present location and condition. Provision is made for damaged, obsolete and slow-moving stock where appropriate.

Debtors receivable and creditors payable within one year

Debtors and creditors with no stated interest rate and receivable or payable within one year are recorded at transaction price. Any losses arising from impairment are recognised in expenditure.

Cash and cash equivalents

Cash and cash equivalents comprise cash on hand and call deposits, and other short-term highly liquid investments that are readily convertible to a known amount of cash and are subject to an insignificant risk of change in value.

Taxation

The charity is considered to pass the tests set out in sections 521 to 536 Income Tax Act 2007 (ITA 2007); as such no income tax is payable on the charity's activities.

Fund accounting

General funds are unrestricted funds which are available for use at the discretion of the trustees in furtherance of the general objectives of the charity and which have not been designated for other purposes.

Restricted funds are funds which are to be used in accordance with specific restrictions imposed by donors or raised by the charity for particular purposes. The cost of raising and administering such funds is charged against the specific fund. The aim and use of each restricted fund are set out in the notes to the financial statements.

Going concern

The financial statements have been prepared on a going concern basis as the trustees believe that no material uncertainties exist. The trustees have considered the level of funds held and the expected level of income and expenditure for 12 months from authorising these financial statements. The budgeted income and expenditure is sufficient with the level of reserves for the charity to be able to continue as a going concern.

2. Donations and legacies

	Unrestricted Funds	Restricted Funds	2019 Total Funds
	£	£	£
Donations	8,639	-	8,639
Legacies	140,500	-	140,500
Gift Aid	1,801	-	1,801
	150,940	-	150,940

	Unrestricted Funds	Restricted Funds	2018 Total Funds
	£	£	£
<i>Donations</i>	<i>16,712</i>	<i>-</i>	<i>16,712</i>
<i>Legacies</i>	<i>69</i>	<i>-</i>	<i>69</i>
<i>Gift Aid</i>	<i>8,703</i>	<i>-</i>	<i>8,703</i>
	25,484	-	25,484

3. Charitable activities

	Unrestricted Funds	Restricted Funds	2019 Total Funds
	£	£	£
Guild shop sales net of VAT	170,369	-	170,369
	170,369	-	170,369

	Unrestricted Funds	Restricted Funds	2018 Total Funds
	£	£	£
<i>Guild shop sales net of VAT</i>	<i>144,328</i>	<i>-</i>	<i>144,328</i>
	144,328	-	144,328

4. Other trading activities

	Unrestricted Funds	Restricted Funds	2019 Total Funds
	£	£	£
Business rate refund Barts NHS Trust	5,943	-	5,943
Christmas concert	3,317	-	3,317
Membership subscriptions (excluding Gift Aid)	1,860	-	1,860
Fundraising	4,029	-	4,029
	15,149	-	15,149

4. Other trading activities (continued)

	Unrestricted Funds	Restricted Funds	2018 Total Funds
	£	£	£
<i>Christmas concert</i>	3,329	-	3,329
<i>Membership subscriptions (excluding Gift Aid)</i>	1,750	-	1,750
<i>Raffle at AGM</i>	314	-	314
	5,393	-	5,393

5. Investments

	Unrestricted Funds	Restricted Funds	2019 Total Funds
	£	£	£
Income from investments	14,973	-	14,973
Bank interest	200	-	200
	15,173	-	15,173

	Unrestricted Funds	Restricted Funds	2018 Total Funds
	£	£	£
<i>Income from investments</i>	14,677	-	14,677
<i>Bank interest</i>	-	-	-
	14,677	-	14,677

6. Expenditure on raising funds

	Unrestricted Funds	Restricted Funds	2019 Total Funds
	£	£	£
Cost of calendars*	2,598	-	2,598
Cost of Christmas concert	1,679	-	1,679
Newsletter	1,047	-	1,047
	5,324	-	5,324

	Unrestricted Funds	Restricted Funds	2018 Total Funds
	£	£	£
<i>Cost of calendars*</i>	3,217	-	3,217
<i>Cost of Christmas concert</i>	1,788	-	1,788
<i>Newsletter</i>	847	-	847
	5,852	-	5,852

* Approximately two-thirds of the calendars formed a free gift to the Hospital.

7. Expenditure on charitable activities

	Unrestricted Funds £	Restricted Funds £	2019 Total Funds £
Cost of goods sold	119,216	-	119,216
Shop-related expenses:			
Salary	33,043	-	33,043
Volunteer travel expenses	2,536	-	2,536
Other shop expenses	7,325	-	7,325
Shop business rates	5,941	-	5,941
Shop telephone costs	424	-	424
Shop consultancy fees	423	-	423
Recruitment advertising	838	-	838
Other expenses:			
Administrator expenses	173	-	173
AGM costs	1,551	-	1,551
Professional fees	7,234	-	7,234
Independent Examiner	780	-	780
IT support costs	-	-	-
Printing, postage, stationery	963	-	963
Insurance	520	-	520
Subscriptions	415	-	415
Helpers' parties	1,243	-	1,243
Website upgrade costs	1,170	-	1,170
Miscellaneous expenses	805	-	805
Princess Alice Garden maintenance	308	-	308
Total expenses	184,908	-	184,908

Grants paid to St Bartholomew's Hospital

Contribution to family holiday	500	-	500
Attendance at EuroELSO congress	342	-	342
Furniture for relatives' room, 6th floor	3,338	-	3,338
Attendance at British Thoracic Society Summer Meeting	451	-	451
European Cancer Rehab & Survivorship Symposium	682	-	682
Hire of ice cream van for NHS celebration	1,500	-	1,500
British Neuro-Oncology Society Meeting (2 places)	288	-	288
Family support necessitated by patient's illness	500	-	500
British Assoc. of Critical Care Nurses' Conference (2pl)	1,115	-	1,115
ARTP Basic Sleep Course	240	-	240
Course fees: PRINCE2® Foundation Project Management	635	-	635
ICS State of the Art Intensive Care Conference (2 places)	500	-	500
Purchase of Echocardiogram, Ward 6A	5,922	-	5,922
Cartledge Memorial Bursary	1,500	-	1,500
British Society of Echocardiography annual conference	600	-	600
Refreshments "Good to Outstanding" safety event	285	-	285
Advanced Non-Invasive Ventilation Study Day	70	-	70
9th Annual Mechanical Circulatory Support Conference	141	-	141
MSc module, Cardiorespiratory Physiotherapy Skills	950	-	950
Purchasing drinks sachets for Christmas gifts for patients	425	-	425
Purchasing mugs and packing Christmas gifts for patients	1,379	-	1,379
Information pack wallets for newly diagnosed patients	216	-	216
Advanced echocardiography online course	425	-	425
Christmas tree for Atrium, Barts Hospital	2,520	-	2,520
Barts Guild Elective Grant (2 recipients)	1,500	-	1,500
Materials for Barts Health Female Pioneers Symposium	278	-	278
Society for Cardio-Thoracic Surgery's Annual Meeting	235	-	235

7. Expenditure on charitable activities (continued)

	Unrestricted Funds £	Restricted Funds £	2019 Total Funds £
2-year Elizabeth Garrett Anderson Leadership Programme	3,000	-	3,000
Noise-reducing equipment	3,331	-	3,331
ECG 12-week course at King's College London	600	-	600
Support for cancer patient's travel costs	500	-	500
Refreshments for 2 'Good to Outstanding' events	1,400	-	1,400
Costs' support for Cardiac Science elective, Sri Lanka	500	-	500
Princess Alice Garden refurbishment	60,750	-	60,750
Unpaid grant 2018-19	(2,429)	-	(2,429)
Total grants	94,189	-	94,189
	279,097	-	279,097

	Unrestricted Funds £	Restricted Funds £	2018 Total Funds £
<i>Cost of goods sold</i>	92,825	-	92,825
<i>Shop-related expenses:</i>			
<i>Salary</i>	24,746	-	24,746
<i>Volunteer travel expenses</i>	2,779	-	2,779
<i>Other shop expenses</i>	8,532	-	8,532
<i>Shop refurbishment</i>	11,486	4,628	16,114
<i>Shop telephone costs</i>	547	-	547
<i>Shop consultancy fees</i>	2,625	-	2,625
<i>Recruitment advertising</i>	3,047	-	3,047
<i>Other expenses:</i>			
<i>Administrator fees</i>	2,424	-	2,424
<i>AGM costs</i>	1,722	-	1,722
<i>Professional fees</i>	8,717	-	8,717
<i>Independent Examiner</i>	780	-	780
<i>IT support costs</i>	1,554	-	1,554
<i>Printing, postage, stationery</i>	357	-	357
<i>Insurance</i>	850	-	850
<i>Subscriptions</i>	1,264	-	1,264
<i>Travel expenses</i>	1,185	-	1,185
<i>Website upgrade costs</i>	11,735	-	11,735
<i>Miscellaneous expenses</i>	1,199	-	1,199
<i>Princess Alice Garden maintenance</i>	263	-	263
Total expenses	178,637	4,628	183,265

Grants paid to St Bartholomew's Hospital

<i>Refreshments for Cancer Transitions course</i>	350	-	350
<i>Christmas gifts for patients (mugs)</i>	1,287	-	1,287
<i>Christmas gifts for patients (drinks sachets)</i>	365	-	365
<i>Black 32" LED television for Critical Care unit, KGV</i>	281	-	281
<i>Complementary Therapies Service treatment products</i>	250	-	250
<i>Barts Guild Elective Grant, Queen Mary UL</i>	750	-	750
<i>Critical Care grant to buy bladder scanner</i>	8,190	-	8,190
<i>Donation towards staff celebrations for CQC results</i>	2,000	-	2,000
<i>Cancer inpatients – PICC Line Covers</i>	113	-	113
<i>St Bartholomew's Heritage for set-up of Trust</i>	5,000	-	5,000
<i>Travel expenses to visit sick husband at Barts</i>	300	-	300

	Unrestricted Funds	Restricted Funds	2018 Total Funds
	£	£	£
<i>Two fridges for patients' beverages, Ward 5B</i>	198	-	198
<i>Society of Cardio-thoracic Surgeons Conference</i>	263	-	263
<i>3rd Clinical Update Sleep International Conference</i>	150	-	150
<i>Contribution to wig for cancer patient</i>	260	-	260
<i>Contribution to Barts Radio studio refurbishment</i>	770	-	770
<i>4 red porter chairs for patients going to surgery</i>	2,429	-	2,429
<i>Contribution to holiday for a family of limited means</i>	500	-	500
Total grants	23,457	-	23,457
	202,094	4,628	206,722

8. Independent examiner's fees

	Unrestricted Funds	Restricted Funds	2019 Total Funds
	£	£	£
Examiner's fees – examination	780	-	780
	780	-	780

	Unrestricted Funds	Restricted Funds	2018 Total Funds
	£	£	£
<i>Examiner's fees – examination</i>	780	-	780
	780	-	780

9. Wages and salary cost

	2019 Total funds	2018 Total funds
	£	£
Gross wages	26,831	20,111
Employer's national insurance costs	2,313	1,743
Employer's pension contributions	3,899	2,892
	33,043	24,746

	2019	2018
Staff numbers:		
Average head count	1	1
Analysed by function:		
Raising funds	1	1
	1	1
Calculated on a full-time equivalent basis, analysed by function:		
Raising funds	1	1
	1	1

9. Wages and salary cost (continued)

The Shop Manager is employed by Barts NHS Trust which invoices Barts Guild for associated wages and salary costs.

There were no employees with emoluments (excluding employer pension costs) above £60,000 in this or the preceding year.

There were no staff to whom retirement benefits accrued under defined contribution schemes in the current or comparative year.

10. Related party transactions

No remuneration was paid to trustees during this or the preceding year.

During the year under review no trustee had travel expenses reimbursed.

There were no other transactions with related parties that require disclosure in the financial statements.

11. Investments

	2019	2018
	£	£
Investments at market value – brought forward	422,073	411,311
Additions	-	2,188
Change in market value	33,338	8,574
Investments at current market value	455,411	422,073

The charity's investments are held in COIF Charity Investment units.

12. Stock

	2019	2018
	£	£
Shop stock	18,714	8,406

The amount of stock recognised as an expense during the year was £92,825.

13. Debtors

	2019	2018
	£	£
Accrued income	4,580	5,079

14. Cash at bank and in hand

	2019	2018
	£	£
National Westminster account	131,904	134,309
Cambridge & Counties Bank fixed deposit	85,000	-
Shop cash float	180	180
	217,084	134,489

15. Current liabilities

	2019	2018
	£	£
Shop creditors	11,323	9,935
Other creditors	34,084	10,278
	45,407	20,213

16. Analysis of net movement in funds

	Total funds brought forward	Total incoming resources	Total resources expended	Transfers between funds	Total funds carried forward
	£	£	£	£	£
Restricted funds					
Penny Wainwright – donation	-	-	-	-	-
Chris Davies legacy	1,583	-	-	-	1,583
Smyrk Trust	-	-	-	-	-
	1,583	-	-	-	1,583
Unrestricted funds					
General fund	548,251	351,631	(284,421)	-	615,461
Net gains on investments (unrealised)	-	33,338	-	-	33,338
Total unrestricted funds	548,251	384,969	(284,421)	-	648,799
Total funds	549,834	384,969	(284,421)	-	650,382

17. Analysis of net assets between funds

	Unrestricted Funds	Restricted Funds	2019 Total Funds	2018 Total Funds
	£	£	£	£
Investments	455,411	-	455,411	422,073
Current assets	238,795	1,583	240,378	147,974
Current liabilities	(45,407)	-	(45,407)	(20,213)
	648,799	1,583	650,382	549,834

18. Defined contribution pension schemes

The charity makes contributions to a pension scheme on behalf of its shop manager who is employed by Barts Health NHS Trust. The total payable for the year under review was £3,899 (2018: £2,892). There were no amounts outstanding at the end of the current period or comparative financial year.

19. Financial Instruments

The carrying amounts of the charity's financial instruments are as follows:

	2019	2018
	Total Funds	Total Funds
	£	£
<i>Financial assets</i>		
Measured at fair value through net income/(expenditure):		
Fixed asset investments	455,411	422,073
	455,411	422,073

The income, expense, net gains and net losses attributable to the charity's financial instruments are summarised as follows:

	2019	2018
	Total Funds	Total Funds
	£	£
<i>Income and expense</i>		
Financial assets measured at fair value through net income/(expenditure):		
Investment income	14,973	14,677
<i>Net gains and losses (including changes in fair value)</i>		
Financial assets measured at fair value through net income/(expenditure)		
Unrealised gains/(losses) on investments	33,338	8,574

Fixed asset investments are held at fair value with valuations obtained using last traded or closing bid market prices available.

20. Contingent Asset

The charity has been named as a beneficiary of an estate. A reliable measurement of the legacy receivable is not available; therefore a contingent asset arises with an estimated value of £70,000. The amount and timing of this income will be dependent on the sale of the property held in the estate.

~~~~~



# Guild Members and Volunteers 2019

Miss Shahrulch Aamir  
Miss Sadir Abdel Fattah  
Dr J David Abell  
Mr Tamam Abid  
Mr Ali Abo-Ragheef  
Miss Shivanie Acharya  
Mr Joseph Adebayo  
Miss Miri Aghaki-Allen  
Mr Muaz Ahmad  
Miss Atena Ahmed  
Mr Rory Allen  
Mrs Caroline Allington  
Mr Jeshua Amalesh  
Mrs Gillian Anderson  
Mrs Marilyn Anderson  
Mr Danny Angell-Payne  
Miss Megan Annetts  
Mr Issmaeel Ansari  
Mr Edward Appiah-Kubi  
Miss Mary Armstrong  
Miss Amy Arnold  
Ms Christine Ashby  
Mr & Mrs J. R. Aspinall  
Mr Alexander Badenoch  
Miss Aneesa Baig  
Miss Sheelagh Bailey  
Mr Rodger Ball  
Mr James Ballinger  
Miss Elun Bamac  
Mr Rayyan Barakat  
Miss Anna Barnfield  
Miss Margaret Bates  
Miss Rosalind Bax  
Mrs Susan Bax  
Mr Numan Baydemir  
Mr Stephen Bench  
Mr Brandon Beng  
Ms Amanda Benton  
Miss Aleksandra A Berezowska  
Miss Zoe Berger  
Mr Leslie Berry  
Dr David Besser  
Mrs Valerie Besser  
Dr David Best  
Mr Prabhakar Bhamidipati  
Miss Mahima Bhatt  
Mrs Louise Biggs  
Miss Carola Maria Bigogno  
Mr Sumanjeet Bose  
Mrs Sue Boswell  
Mr Keith Bottomley CC  
Mr Gwynfor Bowen  
Mr Derek Boyce  
Dr Jeremy Bradley  
Mrs Gillian Braithwaite  
Mrs Thasveer Brar  
Mr Zachary Bridgen  
Ms Julia Briscoe  
Mr Chad Brooker  
Miss Ella Brown  
Mr Cameron Bruce  
Mrs Veena Buch  
Mr David Bull  
Mr Gabriel Burchell  
Mr Jordan Burgess  
Dr Andrew Burnett  
Ms Lesley Burnett  
Mr Hayan Butt  
Mrs Rita Buttigieg  
Ms Suzanne Cantelo  
Ms Jane Carey-Harris  
Mr Lawrence Carter  
Miss Zoë Carter Tai  
Mr Clyde Castelino  
Miss Suheyra Celik  
Mrs Jill Cevro  
Miss Jessica Challenger  
Lady Aileen Chalstrey  
Mr Michael Chan  
Miss Capucine Chapelier de Hesdin  
Dr David Charles  
Mr Jonathan Charnock  
Miss Sungha Cho  
Mr Byung Choi  
Mr Rakin Choudhury  
Miss Anne Chua  
Mrs Elizabeth Clark  
Mrs M L Clark  
Mr Theo Clarke  
Mrs Elizabeth Cleaver  
Mrs Cynthia Cobley  
Mr Patrick Coldstream  
Ms Judy Cook  
Mr Samuel Cooke  
Mr Thomas Cooke  
Mr Bob Cooper  
Ms Helen Cooper  
Miss Madeleine Corkery  
Miss Costanza Coronelli  
Ms Olivia Cox  
Ms Madeleine Craggs  
Mr Jasper Craib  
Mr Conor Czech  
Miss Elisa Dalle Piagge  
Mr Stephen Dar  
Ms Maxine Davies  
Mrs Kate Dawson  
Ms Sveva de Luca  
Ms Belinda Dee  
Ms Indu Dev  
Miss Bethany Dewhurst  
Miss Gurleen Dhillon  
Miss Tanvi Dhir  
Mr David Discalicau  
Miss Salsabil Djelloul  
Mr Shaman Dolly  
Mrs Val Doran  
Mr Vishaal Dovedi  
Mr Jack Dryburgh-Jones  
Mr Aaroh Dubey  
Mr Akash Dusoye  
Miss Amy Easthope  
Mr James Eaton  
Mrs Jenny Edmonds  
Miss Hana El-Sbahi  
Ms Esmee Engels  
Mr Carl Evans  
Ms Lesley Evans  
Miss Rhian Evans  
Ms Sue Evans  
Mr Pieter Jan Eyskens  
Miss Kanoyin Falay  
Mr Sultan Farooq  
Mrs Hilda Fazzani  
Mr John E Fell  
Mr Oscar Fellows  
Miss Alison Fenwick  
Mrs Sadie Ferris  
Mrs Anthea Finn  
Mr Geoffrey Finn  
Mr David Frank  
Miss Sandra Gann  
Mr Laurence Gardner  
Mrs Patricia Gardner  
Mr Mark Garside  
Miss Jennifer Gaze  
Mr Joseph Gbenro  
Mr Sundeep Ghuman  
Ms Patricia Gillen  
Mrs Margaret Gillett  
Dr Cedric Gilson  
Miss Lorna Glace  
Ms Monique Gold  
Miss Caitlin Gordon  
Mr Matthew Gowshall  
Mrs Jane Graham



|                                 |                               |                            |
|---------------------------------|-------------------------------|----------------------------|
| Mr Michal Grela                 | Mr Elshad Karbasi             | Miss Naheed Malik          |
| Miss Anhya Griffiths            | Mr Yusuf Karmali              | Mr Mohammad Hamzah Mansoor |
| Mr Anuj Gupta                   | Miss Neringa Karpaviciute     | Mrs Sophie Marshall        |
| Dr Heather Hackett              | Ms Bridget Katherine Cullinan | Mr Karl Martin             |
| Miss Rachael Hall               | Miss Harman Kaur              | Ms Maria Martins           |
| Mrs Elsie Halsey                | Mrs Mary Kelsey-Fry           | Mrs Susan Mason            |
| Mrs Ellen Hamer                 | Ms Stephanie Kerstein         | Ms Manju Mathew            |
| Mrs Daphne Hamilton-Fairley OBE | Mrs Jane Keyes                | Mrs J. Matthews            |
| Mrs Sylvia Hampton              | Mr Ameer Hamid Khan           | Miss Ashwini Maudhoo       |
| Mrs Amanda Handley              | Mr Hassan Khan                | Mr Adrian McCabe           |
| Miss Hina Anam Hassan           | Ms Mahnur Khan                | Mr Ian McDowell            |
| Mr Michael Hayden               | Miss Zara Khan                | Mr Ruari McGowan           |
| Mr Chris Hayes                  | Miss Sarah Khavandi           | Mrs Mary McNab Jones       |
| Mr Chris Hayward CC             | Dr Yousef Khouli              | Mrs Wendy Mead OBE CC      |
| Miss Margaret Hazard            | Miss Alison Knapp             | Mr Nehman Mehaibain        |
| Mr Paul Heasmer                 | Mr Asher Knight               | Mr Aidan Mellan            |
| Mr David Henry                  | Mr Benjamin Koetsier          | Miss Esther Mitchel        |
| Mrs Margaret Henry              | Mrs Patricia Kraft            | Hon. Sir Stephen Mitchell  |
| Mr Saul Herbert                 | Mr Robert Krug                | Miss Ankita Mondal         |
| Miss Anna Hicks                 | Mr Sagar Kulkarni             | Mr James Moran             |
| Miss Nicole Hill                | Miss Anthousa Kythreotou      | Mr Terence Moss            |
| Miss Danielle Hilton            | Miss Kiriana Lagden           | Dr John Munns              |
| Miss Dhruvi Hirani              | Miss Neha Lalani              | Mr Conor Murphy            |
| Mrs Pauline Hirst               | Miss Joanna Lampard           | Mr Harris Nageswaran       |
| Miss Hilary Hiscocks            | Mr Tomas Lappy                | Miss Gurveen Nagi          |
| Miss Sian Hobson                | Miss Anna Larkin              | Mr Jayesh Nagpal           |
| Miss Josie Hollywood            | Mr Edward Lau                 | Mr Yash Narayan            |
| Prof. Sir Deian Hopkin          | Mr Chris Law                  | Mrs Pamela Nash            |
| Miss Sophie Hopkins             | Mr Christopher Law            | Mrs Jean Nathan            |
| Miss Sophie Hoque               | Mrs Elaine Law                | Miss Eleni A. Nikolopoulou |
| Miss Tanya Hossain              | Miss Anna Leadley             | Mr Matt Nottage            |
| Miss Claire Huck                | Miss Esther Lee               | Mrs Margaret Oates         |
| Prof. Chris Hudson              | Mr Harvard Lee                | Miss Priscilla Ochuba      |
| Mrs Margaret Hughes             | Mr Jen Wei Lee                | Miss Giulia Olayemi        |
| Miss Branavy Irayanar           | Miss Samantha Lee             | Mr Andrew O'Leary          |
| Miss Sumaya Islam               | Mr David L'enclume            | Ms Jan O'Neill             |
| Miss Anita Iyer                 | Miss Kai Liang                | Miss Favour Onwudiwe       |
| Mr Rashaan Jackson-Wade         | Miss Su-Yi Liew               | Mr Stephen Palmer          |
| Miss Chris Jaques               | Mrs Sarah Lister              | Miss Shraya Pandya         |
| Miss Ramsha Jamal               | Miss Xinting Liu              | Miss Manasi Panshikar      |
| Miss Eleanor James              | Miss Jane Lloyd               | Mrs Barbara Pare           |
| Miss Zibad Javed                | Mrs Wendy Lloyd-Bailey        | Miss Alisha Patel          |
| Mr Hammad Jeilani               | Miss Natalie Lloyd-Gale       | Mr Avinas Patel            |
| Mrs Jayne Jennings              | Ms Valeria Locatelli          | Miss Puja Patel            |
| Mr Patrick Jennings             | Miss Nicole Loi               | Dr Andrew Pembroke         |
| Mr Arjun Jeyarajah              | Mr Thomas Longbottom          | Dr Jacqueline Pembroke     |
| Mrs Jenny Jeyarajah             | Mr Timothy Loong              | Lady Judy Percival         |
| Miss Rebecca John               | Mrs Sybil Love                | Miss Ameshka Perera        |
| Mr Ross Johnston                | Miss Lorena Lucioli           | Miss Pooja Phadiya         |
| Mr Harry Jolley                 | Miss Stephanie Lunt           | Miss Eva Phillips          |
| Ms Annwen Jones                 | Miss Valerie Luxton           | Mr Andrew Phillips         |
| Miss Sindhuja Jothimurugan      | Mr Dennis Ly                  | Mrs Claire Phillips        |
| Mr Jack Juckes                  | Ms Emma Lyne-Smith            | Mr Edward Phillips         |
| Mr Lucas Jullian                | Ms Caitlin MacClancy          | Mr Simon Phillips          |
| Mr Milton Justinguthakaran      | Mr Abhiram Magesh             | Ms Elana Pickering         |

Ms Janina Pogorzelski  
Miss Abigail Pomeranc  
Miss Rachel Poustie  
Mr Rejin Pradeep-Kumar  
Miss Molly Price-Smith  
Mr Divesh Prithviraj  
Dr Nina Purvis  
Mr Nameer Rahman  
Miss Anuska Rajen  
Mr Mathur Rakesh  
Mr Mahateja Aditya Ramdhian  
Ms Fatima Rashid  
Mrs Norah Reed  
Mr William Rees  
Ms Anna Reinhardt  
Mr Tian Ren Ye  
Mrs Angela Ringer  
Mrs Jean Ritchie  
Miss Fern Robertson  
Miss Jackie Roe  
Miss Margaret Roles  
Miss Luiza Romanowska  
Mr Michael Rosen  
Mrs June Rosenwould  
Mr Isaac Rothman  
Ms Jill Rowlinson  
Mrs Margaret Rumsey  
Mr Ray Russo  
Miss Sahel Saadat  
Mr Aamir Saiyed  
Miss Sahar Saleem  
Mrs Jacqueline Sanderson  
Miss Nichola Sarathchandra  
Mr Ishaq Sardar  
Mr Mathavan Sarvanantha  
Miss Gauri Saxena  
Mr Jonas Schlautmann  
Mr Christoph Schmidt  
Miss Nadine Schottler  
Sir Marcus Setchell KCVO  
Mr Neal Shah  
Mr Riyan Shah  
Mr Vinay Shah  
Ms Pui Yan Sham

Mr William Shand  
Mr Sathyam Sharma  
Dr Elizabeth Shaw  
Mrs Alison Shepherd  
Dr Stephen Shepherd  
Mr Alexander Sherlock  
Mrs Pat Simmonds  
Dr Paul Simmons  
Mr Sidhant Singh  
Mr Alex Skingle  
Miss Eleanor Smith  
Dr Andrew Smith  
Mrs Sue Smith  
Ms Elisabeth Smyth  
Miss Catrin Sohrabi  
Mr Pardeep Sondhi  
Miss Michela Sorbini  
Dr Elizabeth Sparrow  
Mr Adrian Stirrup  
Mrs Rosamund Stocks  
Miss Laura Stone  
Miss Gemma Stonier  
Miss Pratiti Surana  
Mrs Clare Sweatman  
Mr Yi Liane Daniel Tan  
Miss Tillana Tarkas  
Mrs Hilary Tarr  
Miss Umamah Tarvala  
Miss Emily Taylor  
Miss Sabrina Tee  
Miss Sasha-Nicole Temple  
Miss Jennifer Tew  
Mr Tun Tha  
Mr Lewis Thomas  
Mrs Cynthia Thompson  
Miss Olivia Thornett  
Mr Owuraku Titi-Lartey  
Mr Mubeen Toufiq  
Mr King Chun Kingsley Tso  
Mr Robert Tucker  
Miss Maisha Umama  
Miss Daisy Umelo  
Miss Jayne Usher  
Mr Jan Valadao Spoorenberg

Mr Pritesh Varsani  
Mr Abhilash Vasani  
Dr Sarah Vepers  
Mr Varun Vijay Kumar  
Miss Pirethegai Vimalarasa  
Miss Maria Vittoria Mastantuono  
Mr Jak Vohlidka  
Mr Elias Vouzounis  
Mr Martin Wainwright  
Mrs Penny Wainwright  
Miss Mary Walker  
Mr Thomas Walls  
Mr Tom Walls  
Mrs Lynne Warnock  
Miss Umme Waseem  
Mr David Way  
Dr Judith Webb  
Miss Niamh Whelan  
Miss Gemma White  
Dr Veronica White  
Mrs Ann Wickham  
Mr William Wicks  
Ms Helen Wilding  
Ms Maya Wiles  
Mr Daniel Williams  
Miss Jemimah Williams-Rumble  
Mr Ernest (Tsz Lun) Wong  
Miss Alice Wood  
Mrs Kathy Wrennall  
Mrs Margaret Wyatt  
Mr Daniel Wynn  
Mr Gregory Yates  
Ms Bubura Yee Ning Goh  
Ms Lucy Yendole  
Miss Christy Yip  
Miss Arnee Yogarajah  
Ms Rachel Young  
Miss Mariam Zaidi  
Miss Dorna Zarei  
Miss Nong Zhang  
Mr Yuxuan Zhang  
Mr Hongguang Zhu

# Our Corporate Supporters

Barts Guild wishes to place on record our thanks to the following for their support:

SAUNDERSON  
HOUSE

**Saunderson House Ltd**

Financial planning and investment advice



**TFW Group**  
Providing corporate customer  
communications and specialising in print,  
design and digital



**Elior Group**  
The Whole Experience

**The Guild has also received support from colleagues at a City branch of  
Santander UK plc**



**BARTS GUILD**

St Bartholomew's Hospital  
West Smithfield  
London EC1A 7BE

**Telephone: 020 3765 8700**

**Email: bartsguild@aol.com**

**Contact Telephone numbers**

**Guild Shop 020 3465 6382**

**Head of Volunteering, Barts Health NHS Trust  
020 3765 8896**

**[www.bartsguild.org.uk](http://www.bartsguild.org.uk)**



**Barts Guild Facebook page**

**A way to keep in touch with the Guild**

**<https://www.facebook.com/BartsHospitalGuild>**

**Twitter @BartsGuild**