



# **Barts Guild**

*Friends of St Bartholomew's Hospital*

*since 1911*

## **One Hundred and Sixth Annual Report and Accounts**

**2017 – 2018**



HRH The Duke of Gloucester on the occasion of the opening of the refurbished Barts Guild Shop on 3 October 2017, seen here with Guild President Ann Wickham and Chairman Patrick Jennings in the Princess Alice Garden



## **Barts Guild**

*Friends of St Bartholomew's Hospital since 1911*

### **Annual Report and Accounts 2017-2018**

#### **Contents**

The Guild of the Royal Hospital of St Bartholomew .....	2
Report of the Trustees .....	3
Our Chairman's letter .....	15
Obituaries .....	16
Minutes of the Annual General Meeting 2017 .....	17
Financial Statements 1 April 2017 to 31 March 2018 .....	20
Report of the Honorary Treasurer ...	20
Independent Examiner's Report ...	21
All Funds Year ended 31 March 2018 ...	22
Balance Sheet ...	23
Notes to the Accounts ...	24
Guild Members and Volunteers 2018 .....	34
Our Corporate Supporters	

**[www.bartsguild.org.uk](http://www.bartsguild.org.uk)**

The Guild wishes to express grateful thanks to TFW Printers ([sales@tfwprinters.co.uk](mailto:sales@tfwprinters.co.uk)) for their help in producing this Annual Report.

Photography: BLSA, Bob Cooper, Malcolm Crisp, Lesley Evans, Patrick Jennings, Jenny Jeyarajah, Phil Moss, Hilary Tarr

**THE GUILD OF THE ROYAL HOSPITAL OF ST BARTHOLOMEW**  
(also known as the Barts Guild)

Registered Charity No 251628

Affiliated to ATTEND – Enhancing Health and Social Care, locally

**PATRON**

HRH The Duke of Gloucester KG GCVO

**PRESIDENT**

Mrs Ann Wickham

**VICE-PRESIDENTS**

The Lady Mayoress

Mrs Margaret Gillett  
Mrs Daphne Hamilton Fairley OBE  
Mrs Pauline Hirst  
Professor Christopher Hudson  
Mrs Mary Kelsey Fry  
Mrs Mary McNab Jones  
Lady Percival  
Mrs Alison Shepherd  
Dr Audrey Tucker

**OFFICERS OF THE GUILD 2017-2018**

**Chairman**

Mr Patrick Jennings

**Vice-Chairman**

Sir Marcus Setchell KCVO

**Honorary Secretary**

Mrs Jenny Jeyarajah

**Honorary Treasurer**

Mr Keith Bottomley CC

**COMMITTEE OF MANAGEMENT 2017-2018**

**Ordinary members (elected)**

Mr James Ballinger  
Ms Belinda Dee  
Ms Lesley Evans  
Mr David Frank  
Mr Chris Hayes  
Ms Valeria Locatelli  
Mr Ian McDowell  
Mrs Wendy Mead OBE CC  
Dr Andrew Smith  
Mr Adrian Stirrup  
Mrs Hilary Tarr  
Mrs Lynne Warnock  
Miss Niamh Whelan

**Co-opted members**

Mr Steve Bench  
Miss Lorna Glace, Grants Co-ordinator  
Mr Michael Hayden  
Ms Jan O'Neill  
Mr Andrew Phillips, Immediate Past Chairman  
Miss Jackie Roe, Princess Alice Garden Co-ordinator

**Those with other executive responsibilities  
or invited to attend meetings**

Mrs Thasveer Brar, Administrator  
Miss Stella Cawker, Shop Manager  
Mrs Sue Gilbert, Administrator  
Mr Phil Moss, Membership Secretary, IT and Website  
Co-ordinator

# Report of the Trustees

## Reference and administrative details of the charity, its trustees and advisers for the year ended 31 March 2018

### Trustees

Mr Patrick Jennings	Chairman		
Sir Marcus Setchell KCVO	Vice-Chairman	Reappointed 23.10.17	
Mrs Jenny Jeyarajah	Honorary Secretary	Reappointed 23.10.17	
Mr Keith Bottomley CC	Honorary Treasurer	Appointed 23.10.17	
Mr Tony Dickenson	Honorary Treasurer	Retired 23.10.17	
Mr James Ballinger	Appointed 23.10.17	Mrs Wendy Mead OBE CC	
Dr David Best	Retired 23.10.17	Dr Andrew Smith	
Ms Belinda Dee	Appointed 23.10.17	Dr Elizabeth Sparrow	Retired 23.10.17
Ms Lesley Evans		Mr Adrian Stirrup	Appointed 23.10.17
Mr David Frank		Mrs Hilary Tarr	Appointed 23.10.17
Mr Chris Hayes	Appointed 23.10.17	Mrs Lynne Warnock	Reappointed 23.10.17
Ms Valeria Locatelli		Miss Niamh Whelan	
Mr Ian McDowell			

### Charity Registered Number

251628

### Address of principal office

St Bartholomew's Hospital  
West Smithfield  
London EC1A 7BE

### Independent Examiner

Blue Spire Limited  
Cawley Priory  
South Pallant  
Chichester PO19 1SY

### Bankers

National Westminster PLC  
P O Box No159  
332 High Holborn  
London WC1V 7PS

CCLA Charity Accounts  
Senator House  
85 Queen Victoria Street  
London EC4V 4ET

HSBC Bank PLC  
31 Holborn  
London EC1N 2HR  
(until December 2017)

## Structure, governance and management

### Structure of the charity

Barts Guild is an Unincorporated Association charity. Its governing document is its Constitution which was revised, agreed and adopted by the Guild's Management Committee and the Charity Commission in November and December 2013. In recent times the governing document has been updated in 2000, 2002 and lastly in 2013. Further update is intended in 2018. (See also website [www.bartsguild.org.uk](http://www.bartsguild.org.uk))

Five meetings of the Management Committee (MC) of trustees take place during the year. In addition, a number of sub-committees take the Guild's activities forward in the following areas: Grants; Finance and Accounts; Investments; Membership; Fundraising; Publications and Publicity; IT and Website; Shop and Business (this last committee meeting monthly).

### Recruitment and appointment of new trustees

The charity in general meeting shall elect the officers and the other trustees. The trustees may appoint any person who is willing to act as a trustee. The number of trustees shall not be less than ten but (unless otherwise determined by a resolution of the charity in general meeting) shall not be subject to any maximum. Any member or volunteer can be nominated for potential trusteeship.

Nominees for trusteeship/members of the Management Committee are interviewed by the Chairman, sometimes with the Hon Secretary; two referees are required in every case and nominations are agreed by the MC before being proposed for election at the AGM. In its trustees the Committee looks for areas of expertise important to the modern charity (e.g., law, finance, IT) and/or practical applications to help the Guild

in its day to day work in the shop and hospital trolley services and other activities. In a similar fashion trustees can also be removed by the MC.

New members of the MC elected at the 2017 AGM were: Mr Keith Bottomley CC (Hon Treasurer), Mr James Ballinger, Ms Belinda Dee, Mr Chris Hayes, Mr Adrian Stirrup and Mrs Hilary Tarr. The new members bring to the Guild a range of important skills in financial management and banking, fundraising, communications and administration.

### **Risk assessment**

The Management Committee (MC) has assessed the major risks to which the charity may be exposed and is satisfied that systems are in place to manage exposure to the risks. The categories of risk surveyed cover: governance; operations; finance; external environment; compliance. Some examples of risks include: the ability to sustain the needed level of volunteers and the current level of income, a fall in investment values and returns, reputational risks and unforeseen changes in the operation of the NHS.

These risks are mitigated by active management by the MC and its sub-committees, close consultation with Barts Health NHS Trust Voluntary Services, careful review of investments and monitoring of the professional (special charity) investment advisers and liaison at board and senior management level with both Barts Hospital and Barts Health NHS Trust.

In addition, arrangements have been made for complying with the General Data Protection Regulation (GDPR) that was introduced on 25 May 2018.

### **Objectives and activities**

The objects of the Guild are to help the Royal Hospital of St Bartholomew by providing:

- **By personal service and by provision from the Charity's funds such amenities for the patients and staff as would not be available to them under the National Health Service;**
- **Such other charitable assistance to the Hospital, its patients, former patients, staff, students and others involved with the affairs of the Hospital as the trustees may determine.**

The main activities undertaken by the Guild to carry out these objects for the public benefit are:

- running a general and souvenir shop as an amenity for patients, staff and visitors;
- providing a trolley service for inpatients, selling newspapers, toiletries, confectionery and convenience items;
- making grants for the provision of facilities on wards for patients and staff;
- funding the purchase of clinical equipment.

In relation to all the Guild's activities we have paid due regard to the guidance published by the Charity Commission concerning public benefit.

### **Achievements and performance**

#### **Shop services**

Apart from legacies, donations and investments, the Guild's chief recurrent income is generated by the shop and trolley service (the latter to hospital wards). The shop's continuing advantages of a central location in the heart of the King George V block, where most of the patients and clinics are based, and the excellent commitment of our shop and trolley volunteers, have underpinned a very satisfactory stream of income and sales in recent times.

Shop income of £144,328 net of VAT was very marginally less than the previous year (£146,005); (bank card transactions accounted for 25% of sales). This was a strong performance given the unavoidable disruption caused by the shop's new refit, training sessions necessary to use fully the new smart till, slower than desired recruitment of volunteers through the NHS Trust Voluntary Services in part because of stringent background checks, and the retirement of some valued long-service volunteers as well as that of our long-serving and experienced Shop Manager Christine Ashby. The energy of the retired Shop Manager and that of her successor

in the financial year's last quarter, Stella Cawker, have kept the service progressing well, aided too by an active Shop & Business sub-committee.

The extensive refitting of the shop's interior and facility, identified as a priority in last year's Annual Report, was well accomplished in 2017 and its attractive and welcoming new appearance has contributed notably to the shop's custom and popularity.

### **Information technology**

A major project was fulfilled to improve the Guild's website's capability with better online functionality for members to join, donations and bequests to be encouraged and shop items (such as souvenirs) to be bought. More news, events, audio recordings, charity information and interactive processes for financial grants and membership are now present for the Guild on the web. The new website was launched in May 2017.

### **Membership**

There has been considerable take-up of the offer of free Guild membership to students of Barts and The London School of Medicine and Dentistry (BLSMD). Over 250 students have enrolled with the Guild at the date of signing. In return students may help, where practicable, with Guild activities but the chief purpose of the proposal is to attract the interest of a new generation of practitioners who may continue to support the Guild long after their student days have ended. The Guild now, too, can offer some financial support over several coming years for some educational needs of BLSMD students, via a generous donation by Mrs Penny Wainwright and her family.

### **Grants**

A total of £23,457 was spent on grants to the Hospital during the year. Many of these were small (i.e. under £1,000) for comforts such as a television and refrigerators, and also support for staff members attending conferences. This expenditure is in line with the broad target set by the MC for annual grants currently at a time when the Guild has also made significant non-recurrent investment, for present and future, in a refurbished shop and an enhanced website.

The Guild's largest grants during the period under review were for the purchase of a bladder scanner for Critical Care patients (£8,190) and a contribution (£5,000) towards the set-up of the new St Bartholomew's Heritage organisation which aims to fundraise for, repair and develop the Hospital's historic North Wing and Great Hall. A full list of grants awarded is contained in this Report's Notes to the Accounts.

### **Estimated numbers of beneficiaries served directly by the Guild**

The new smart till technology allows increasingly more accurate record of the quantity and value of shop sales than has been possible until now. The year saw approximately 85,000 visits/customers/sales transactions to and in the shop and the wards' trolley service, by patients, visitors and staff. The average sales value of a transaction in the shop was about £2 and between £2 and £3 for the trolley service.

### **Estimated hours worked by the Guild volunteers during the year**

During the year the Guild's active volunteers of all types, front line and management/support, contributed approximately 6,300 hours of work for the charity and, therefore, the hospital. [Front line = the shop and ward trolley rounds, Monday-Friday, Saturday-Sunday; Management/support = officers and other trustees and management committee meetings, sub-committee meetings and consultations, membership secretary, co-ordinators for grants, website, IT, Princess Alice Garden and the administrators].

In this period both shop opening hours and volunteer hours worked were affected to some degree by factors alluded to elsewhere, for example, the shop refurbishment schedule and the retirement of some experienced volunteers.

## **Financial review**

The Financial Statements are set out in this Annual Report. The salient features of financial performance and resource are outlined in the Hon Treasurer's Report.

The charity's income for the year was £189,882 (2017: £183,528). Investment income totalled £14,677 (2017: £7,333). The Guild's total funds are £549,834 (2017: £563,952). The treasury responsibility and financial oversight were augmented by the appointment of two new trustees: Keith Bottomley CC as Hon Treasurer and Hilary Tarr as Assistant Treasurer/Bookkeeper.

## **Reserves Policy**

Our policy for the financial reserves is that we should endeavour to hold sufficient to cover a year's expenditure on shop-related and other expenses, together with the current aim of spending about £20,000 per year on grants. Therefore the current required amount of such reserves is broadly £200,000 (that is, the 2017-18 scale of the total of recurrent and some non-recurrent shop-related and other expenses plus a target figure for grants). We are conscious that in recent years the charity's financial position has been much enhanced by the receipt of some substantial legacies and improved turnover in the relocated shop. We believe that the current financial standing of the charity will enable us to further develop the charity and to expand our grant-giving ability to help the NHS Trust. Based on the current level of its reserves the charity is well able to meet its projected obligations and liabilities and has no uncertainty over its continuing status as a 'going concern' as at the signing date.

## **Plans for future periods**

The trustees examine and consult on future needs and issues, mindful of being responsive to changing patient needs and hospital developments. Over the next five-year period we aim to:

- enlarge the range of shop stock;
- increase online pre-ordering procedures for shop goods (including consideration eventually of orders from inpatients in wards);
- raise the level of grants (provided that the financial position allows through shop income, improved fundraising and investments);
- increase membership numbers, both subscription members and active volunteers, and including aspiration to increase the number (and/or in-kind or financial contribution) of our corporate supporters.

Maximising the new website's capacity will be important to helping with several of these initiatives.

A major development currently under operational and fundraising review is significant refurbishment and enhancement, starting in 2018-19, of the Princess Alice Garden which was inaugurated by the Guild in 2004 and which the Guild maintains for Barts Hospital for the enjoyment and comfort of patients, staff and visitors.

## **Support**

Barts Health NHS Trust continues to be greatly supportive of its oldest service-providing volunteer charity. We are also very appreciative of the support for and interest in the Guild of our Royal Patron HRH The Duke of Gloucester and his officials.

The Guild appreciates the interest of staff of commercial companies that have expressed support for us, via financial or in-kind assistance, some of which are cited in this Annual Report. Elixir UK and M&G Investments have contributed to the Guild very helpfully in 2017-18.

In recent years and again during this year, the Guild is especially grateful for the financial sponsorship and support provided by Saunderson House Limited.

Approved by the trustees on 19 July 2018 and signed on their behalf



Patrick Jennings  
Chairman

## Update for 2017-2018

*The Annual Report focuses on the financial year 2017-2018 but in this section we also mention some activity in the current financial year, the better to bring Guild members and others as up to date as we can with the charity's developments. Some of this information will also have been noted in the autumn and spring editions of Barts Guild News, text of which is also available on the Publications page of the Guild website.*

### Trustees and Management Committee (MC) members

Some of the new elected appointments to the MC were signalled in last year's Update as they were already co-opted members. Also elected at the 2017 AGM were our new Hon Treasurer Keith Bottomley CC and Hilary Tarr who has become Assistant Treasurer and Bookkeeper as well as acting as managing editor of this Annual Report publication. Keith is a Common Councilman of the City of London, is a member of the Chartered Institute of Bankers and has over 20 years' City and business experience. He chairs the Projects Sub Committee of the Policy and Resources Committee, and is deputy chairman of the Port Health and Environment Committee, of the City of London Corporation. He is also a trustee of other bodies including Partnership for Young London and City of London Academy. Hilary has over 30 years' experience in administrative and executive positions, including responsibility for arranging events and publications, in a range of organisations in the following sectors: education (she is also a qualified teacher), local government, accountancy, valuations and a church. We welcomed back also Michael Hayden, as a co-opted MC member, who previously served as Guild Hon Treasurer during 2010-14.

### The Guild Patron's Visit

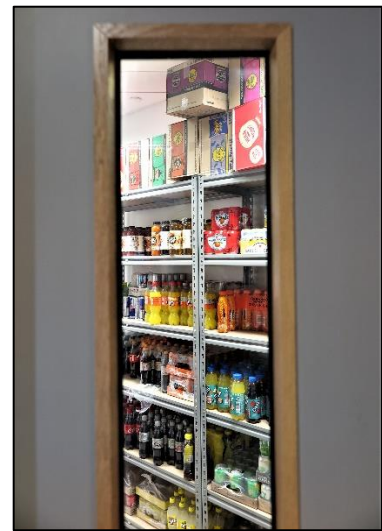


Guild President Ann Wickham presents HRH The Duke of Gloucester with a photo of his mother, The Duchess of Gloucester, at Barts in 1950. Presentation was made in the refurbished Guild Shop on the occasion of its formal opening by the Duke on 3 October 2017.

A highlight of the year was the visit of Barts Guild's Patron (and Barts Hospital's President) HRH The Duke of Gloucester, to formally open the Guild's new shop in the King George V building on 3 October 2017. HRH was welcomed by Guild Chairman Patrick Jennings and Barts Hospital's Managing Director Professor Charles Knight.

After cutting the ribbon HRH talked to volunteers in the shop, was presented with a framed picture of his late mother photographed at the Hospital in 1950, visited the Barts Heart Centre, saw the Princess Alice Garden named in his mother's honour and had tea and further conversation with Guild volunteers – and Hospital staff – in the James Gibbs Flat. It was a memorable day and also an enjoyable one for colleagues to talk with the Duke and his Private Secretary Lieutenant Colonel Alastair Todd. For many decades, and through HRH today, the Gloucester family has given its friendship and support to Barts Hospital and its Guild.

## Shop and trolley service



Shop Manager Stella Cawker with Shop and Business Sub-Committee's Chair, Steve Bench. In addition to other responsibilities, Stella oversees the ordering and storage of stock for both the shop and the trolley service.

The reach and grasp of the shop and trolley service are illustrated by the numbers of those catered for and cited in the earlier pages of the Report of the Trustees. This service is the lifeblood of the Guild's support to Barts and its work continues to be a fine tribute to our volunteers, Shop Manager and the regularly meeting Shop and Business Committee. At the end of 2017 Stella Cawker succeeded Christine Ashby as Shop Manager and has brought her energy and enthusiasm to the development of the refitted shop and its stock organisation. Recent takings from the shop and trolley often exceed £700 per day, a notable achievement of the considerable effort given by the shop's management and volunteering. A number of long-serving shop volunteers retired recently. However some of them have returned to working with us, testament to their own admirable commitment to volunteering and the Hospital as well as the draw of the Guild and its colleagues. Despite this encouragement, a stream of volunteer recruitment is still much needed.



Guild-branded lanyards are a new souvenir in the Shop this year, available in black or white.

## Grants

The Guild often provides comforts for patients, and aids for staff, that are modest in outlay but important in impact; for example, televisions, clocks, iPad tablets. Attendance at courses and conferences for nurses and doctors has been another recent grants' area since this kind of professional interchange often suffers when financial stringencies bite. For these types of comparatively small benefits, that other charities might not be able to supply because of more considerable needs facing them, the Guild could be perceived as a granting body of 'first instance'. On other occasions the Guild might be able to provide a grant, or indeed a top-up of a grant shared with other grant-givers (a last piece of the jigsaw, as it were), that is under the radar for whatever reason of larger financial sponsors; here, the Guild might become a grant maker of 'last resort'.

Grants paid by the Guild in 2017-18, either met in full or as a contribution to a larger need, amounted to £23,457. These, and others up to end July 2018, included: a bladder scanner (£8,190), aided by much appreciated support from M&G Investments; furniture for patients' relatives' room (£3,338); and, contribution towards setting up the new St Bartholomew's Heritage body for conserving and developing Barts' historic North Wing (£5,000). Grants between £1,000 and £3,000 were for Christmas gifts for patients; donation towards a Hospital staff celebration of a Good report by the Care Quality Commission; and hire of an ice cream van to serve patients, staff and visitors on the day celebrating the 70<sup>th</sup> anniversary of the National Health Service. Grants of £200 to £1,000 included: support for very ill patients and their families; a TV; fridges; Barts Radio studio's refurbishment; and treatment products for the Complementary Therapies service. Costs of Hospital staff attendance were met for medical conferences, meetings and a placement: in Copenhagen, Prague, Cape Town, London, Manchester, Winchester and Bournemouth. A full list of 2017-18 Grants is cited in the Notes to the Accounts.

## Events

### ***A Celebration of Christmas***

Our annual concert in Barts Great Hall took place in December 2017. The Barts and The London Music Society Choir with conductor Penelope Jane Homer and accompanist Nicola Bibby gave a much-appreciated performance of seasonal music, and actors Frank Barrie and Ursula Mohan, whom we welcomed once again, selected and provided splendid readings.



Sponsorship from Saunderson House (and their volunteers on the evening) was greatly appreciated by the Guild. As ever we are especially grateful to Jan O'Neill for her oversight of the event and her expertise. We are also delighted and grateful that Saunderson House has indicated it will sponsor the Guild's 2018 concert, now for the sixth year, and we are most fortunate in Saunderson House's friendship.

### ***Volunteers' Christmas Party and Helpers' Party***

The Guild once more held its volunteers' Christmas (and thank-you) party at the nearby Lord Raglan pub, this time with very generous hospitality provided by Elmor UK.

In May 2018 the traditional 'Helpers' Tea' became the 'Helpers' Party' and was a similarly enjoyable occasion for volunteers to attend. Helpers' Tea in 2017 received a very interesting talk from Ian Haig, who was then Barts Hospital's Director of Operations.

## ***AGM Guest Speaker***

The guest speaker in 2017 was Sir Marcus Setchell, the Guild's Vice-Chairman, and his talk was entitled 'Royal Barts, Royal Births, Royal Doctors: A cavalcade of history'. This proved to be a most fascinating walk through years from 16<sup>th</sup> century to the present day, attractively illustrated and engagingly delivered. Sir Marcus referred to his own career and the welcomed advances in obstetrics which would have seemed inconceivable in bygone times.

## **Christmas at Barts Hospital**

The Guild's more than 300 Christmas gifts to Barts inpatients and staff – one of our most appreciated services to Barts – were again organised by Ann Wickham and her notable team. They consisted of Guild-branded mugs and beverage packs. As last year, a Guild trolley service and present-giving to the wards took place on Christmas Day. The Guild is very grateful to those volunteers (including the Chairman!) who gave up their prime holiday time in this way, a reminder once more as we said last year that the Guild's volunteers embody the spirit of being their brothers' and sisters' keepers.



## **Guild website**

The new website went live in May 2017, accessible to computer, tablet and smartphone. It provides much information and news of our activities, including audio material (so far, interesting Barts Radio interviews with the Guild President and a former Chairman), and allows online payments for the first time. Through its functionality, visitors to the site can become a member, donate, purchase souvenirs, register volunteer interest, apply for grants, and keep up with the very latest news.

Since the new website was launched it has attracted, at time of writing, just under 3,000 visitors, many making multiple visits to the site. Most live in the UK, although there has been interest from, for example, the United States, Australia, Canada, France and Germany. The most popular page is the front of the online Souvenir Store, and overall there have been nearly 17,000 page views. Souvenir sales through the website have been progressing well and the site has also helped to generate new memberships and donations; most of our grant applications are now submitted through the site.

## **Guild Administrators**



Following the retirement of Helen Cooper, Sue Gilbert became Guild Administrator in 2017 and Thasveer Brar has joined her in 2018. In a sense it is a coming home for Sue as she was formerly a nurse at Barts Hospital during 1981-84. Thas has worked for British Airways for over 20 years, especially with its engineers in BA's Engineering – Operations & Planning department. We warmly welcome both. Abha Mehta served also as Administrator for a brief time but had to withdraw from volunteering for family reasons.

Seen here by the fountain in the Barts Square, our administrators Sue (L) and Thas (R).

## Engagement with Barts and The London Students' Association (BLSA)

The relationship between the Guild and the BLSA continues from strength to strength, reinforced further by the current BLSA President Tom Longbottom, already a Guild member. Tom has said of his earlier help in fundraising: "It has been a real pleasure to raise funds for the Guild and I have very much enjoyed learning more about the fantastic work the charity does". Over 100 students joined the Guild in the new academic year, chiefly via the BLSA Freshers' Fayre attended by both the Membership Committee's Chair and Secretary (the Secretary also attended the Queen Mary Students' Union Volunteering Fayre), and some are very active in our support.

We celebrate third year medical student Bubura Yee Ning Goh from Borneo who ran the Virgin London Marathon – over 26 miles – in April 2018 to support the Guild. Her fundraising has brought wide acclaim and huge thanks are due from the Guild to Bubura.



The first Barts Guild Cartledge Memorial Grant (£750) was given to final year medical student, Michael Willis, to support an educational placement in Cape Town, South Africa. He chose to undertake this in emergency medicine at Khayelitsha District Hospital in a CT township in May-June 2018. These grants are available to students in financial hardship, supported by the benefaction of Penny Wainwright and her family. A full account of Michael's placement can be found on the Guild's website at <https://www.bartsguild.org.uk/barts-guild-elective-grant>.

We greatly appreciate both the thought and deed of our student partners. One day, we hope that deep in the hands of some of them will lie leading responsibilities for this great Hospital and its Guild.

For the second year in a row, too, the Guild has been named a beneficiary charity for BLSA's RAG (Raise and Give) Week – likely to result in a gift of around £1,000. The Guild Chairman was invited to join the academic procession at BLSA's "Rites of Passage" ceremony, a graduation event celebrating the academic and extra-curricular achievements of Barts & The London students, held in St Paul's Cathedral (places in this procession and on the platform are much sought after!). Students including the then BLSA President Rakin Choudhury also participated with the Guild in the Lord Mayor's Show (see over).

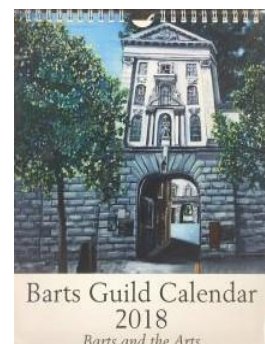


Supporters of Barts Guild and volunteers get the message across at the Lord Mayor's Show, November 2017.

## Publications and Publicity

### ***Calendar 2018***

The Guild's Calendar for 2018 adopted a more contemporary approach (developed by trustee Ian McDowell), featuring examples of the new art commissioned for Barts Hospital by Vital Arts which works in partnership with Barts Health NHS Trust, along with more traditional images from Barts Archives. This edition saw possibly the best sales figure since the inaugural 2012 Calendar. Sales continued well into 2018, a testament to some adroit discounting and improved display possibilities afforded by the new shop, facilitated by Shop Manager Stella Cawker and our shop volunteers.



### ***Barts Guild News***

Jan O'Neill's skilful editorship ensures the twice-yearly appearance of *Barts Guild News*, comprising a full gallery of news and announcements, historical articles and some reminiscences. More 'volunteer voices' to be published in BGN are always to be encouraged. All editions from the past few years are available to view on the Guild's website at [www.bartsguild.org.uk/publications](http://www.bartsguild.org.uk/publications).



## Princess Alice Garden



The Garden continues as a haven of tranquillity over which Jackie Roe keeps a watchful eye. We are grateful to Noel Shiel, our part-time gardener, for his conscientious upkeep of the Garden.

The hot summer weather has been a strain on this and all other gardens, and the Guild is extremely grateful to those who have volunteered to keep it watered.

## The 70<sup>th</sup> Anniversary of the National Health Service

Barts Guild, including its President, Vice-Chairman and Hon Secretary, was well represented at a special service in the Church of St Bartholomew the Less on 10 June 2018 to commemorate the 70th anniversary of the foundation of the NHS. This was broadcast live on BBC Radio 4. The Service was led by The Revd Marcus Walker and the sermon was given by the new Bishop of London, The Rt Revd and Rt Hon Dame Sarah Mullally. Noting that the NHS was not born without opposition, the Bishop spoke of its great achievements and of all those who work within it. There was still much to do continuously to improve healthcare for all and to address inequalities. However the NHS was established to meet the needs of the 'common good' and it was right to salute the political will of such as Aneurin Bevan, Clement Attlee and Stafford Cripps who enabled that healthcare would be freely available to all.



As its particular contribution to the anniversary celebration, the Guild sponsored Mario's ice cream van to offer ices free of charge to staff, patients and visitors. There was a long queue round the square on 5 July of those eager for a cone (complete with flake, syrup or sprinkles, if desired) or a lolly. Not surprisingly the event was extremely popular and much appreciated by the Trust. Volunteers were able to talk about the work of the Guild to those queuing and distribute an information flyer.



## Management Committee discussions



The work and progress of the Guild (currently with over 450 members and volunteers, including over 250 student members) and its sub-committees are overseen by the Management Committee, which also shapes policy and ensures the charity follows Charity Commission requirements in an increasingly regulatory age. New data protection legislation, the General Data Protection Regulations (GDPR), came into force in May 2018. It is a European Union regulation that replaced the UK's Data Protection Act 1998 (and will continue beyond Brexit) giving individuals more rights and control over the data which organisations hold about them and introducing requirements as to how organisations collect, use and store individuals' information. The Guild is now fully GDPR compliant and all members were informed of its GDPR implications. Preparation for GDPR entailed extensive work by particularly trustee Dr Andrew Smith and Membership Secretary Phil Moss. We are grateful to them for their diligence.

**And finally ...** In order to achieve all it does for Barts Hospital, the Guild is indebted to the help of so many. The administrative team at Barts Health, the Volunteers who are the very heart of the Guild, the trustees in providing the framework enabling the Guild to meet its legal obligations amidst the myriad of regulatory requirements, those that donate to the Guild and of course the patients and staff of the hospital in giving us our charitably purpose.

Recognition of our service, gratifyingly, is most felt by those who benefit from it. A cancer patient in the Hospital has written: "...it has been my absolute pleasure to have encountered your outstanding staff in the St Barts Gift Shop, their customer service delivery well worthy of remark. I was always treated and served with patience, consideration and knowledgeability... I cannot commend them highly enough as they ideally represent St Bartholomew's Hospital to the optimum degree." The Clinical Lead of the Cardio-Respiratory Therapy Team spoke of a grant allowing her colleague to attend a conference: "This is so wonderfully generous and supportive – huge thanks in helping Rachel achieve her continuous professional development, and in turn aiding our department with respect to current evidence and practice." Prof Charles Knight, Barts Hospital's MD, said when the Duke of Gloucester visited: "It is wonderful to celebrate and recognise the fantastic support that the Barts Guild volunteers continue to provide to patients, their families and our staff after more than one hundred years."

"We've heard of St Bartholomew's Hospital in Latvia, you know" a student from Riga said not long ago. It's a part of the world too, across Northern and Eastern Europe, where the word 'Guild' is especially familiar since medieval times: from the west in the City of London to the east in the old cities of the Hanseatic League. Always a term of influence and usually one of power, it had and has several connotations but its chief resonance is that of brotherhood and sisterhood and, most of all, when looking after and serving others. That is what the Guild of Barts Hospital set out to do four generations ago in 1911 and what it still accomplishes today.

~~~~~

## Our Chairman's letter



I think this has been a good year for the Guild. The Guild's finances are in good shape, the Guild Shop is prospering and continuing to provide a unique service to the patients and staff in offering not only a place to buy any necessary items but also if required a place to pause and chat. Additionally, the Shop is building on last year's refurbishment in expanding its product lines, modernising its computer systems and expanding its services.

Grants made by the Guild are moving steadily forward with some heart-rending and much-valued donations being made. Our grants reach so many different causes and people within Barts Hospital, medical students, patients, staff and many needy causes and it is a great privilege to be able to offer this support. In addition to our mainstream donations, it was both novel and invigorating to be given an opportunity also to support the NHS 70<sup>th</sup> Anniversary Celebrations by sponsoring an ice cream van providing free ice creams to all the Barts staff on a scorching day in July.

The Guild is extremely fortunate to have received two legacies from the estates of John North and William Lugg, which will help greatly in securing the foreseeable future for the Guild.

We are strengthening our ties with the students of the Barts and The London School of Medicine and Dentistry and I was privileged to attend the graduation ceremony at St Paul's Cathedral in July.

The Guild is planning the refurbishment of the Princess Alice Garden and we are fortunate that Lady Mary Keen has agreed to lead the project. Lady Mary is a renowned landscape architect and contact through the Guild's Royal Patron His Royal Highness The Duke of Gloucester KG GCVO.

I would like to thank the Trustees and Members of the Management Committee for the huge amount of work that collectively they contribute to the work of the Guild. It is no mean feat to run a charity in this day and age with the constantly changing regulations that need to be complied with, and to do so with a team of volunteers is hugely demanding on all those that sacrifice so much of their time.

In order to carry out our work we need the help of many who work at Barts Hospital. Here, I would like to thank especially Barts Hospital's own management board, which does a tremendous amount to assist us, and Barts Charity, for their support and encouragement. I would also like to thank the other Barts charities: Rahere and the Voluntary Board with whom we seek to work ever more closely.

The future promises much for the Guild as long as we continue to adhere to the traditions of the Guild of working tirelessly with each other, accepting and supporting our frailties and playing to our strengths.

**Patrick Jennings**



# Obituaries



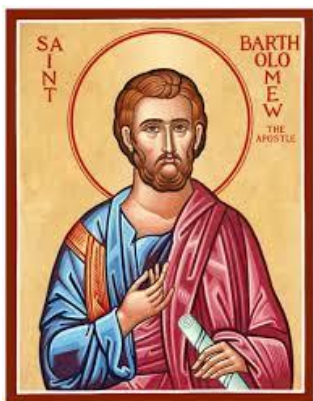
**John Wickham**, eminent Barts consultant urologist and the husband of our President, died in October 2017. He has been described as British urology's greatest innovator who introduced the concept of minimally invasive (keyhole) surgery and was hailed as "the godfather of robotic surgery". There were obituaries in the national and professional press, as well as in *Barts Guild News* together with an appreciation of his memoir "An Open and Shut Case".

A thanksgiving service for John was held in April 2018 in the Priory Church of St Bartholomew the Great. The large congregation represented a "full tapestry", to use the Guild's Hon Secretary's words, of John's life and career: his family, friends and many distinguished colleagues, several of whom gave eulogies. In his Address, Fr Marcus Walker Rector of the Parish, recognising the good that John had accomplished for so many people in his career, called him a "great man" echoing the phrase of John's granddaughter Sophie Marshall in a poem she dedicated to her grandfather. Hand in hand with his ability and achievements were John's kindness, humour and modesty – a man for all seasons.

At the time of writing we had just learned that **Mrs Joyce Malpas**, a Guild Vice-President, had died. Joyce joined the Guild in the 1970s and for many years volunteered in the shop and trolley service. She became Guild Chairman in 1989-92 and President 1997-2008. The Princess Alice Garden was opened during her Presidency. Joyce was married to Professor James Malpas who specialised in paediatric oncology and was Dean of Barts Medical College in 1969-72 and Senior Lecturer (Hon Consultant) in the Department of Medical Oncology. Both were very strong supporters of the Barts Guild, not least in its recent application for The Queen's Award for Voluntary Service



In 2014 Joyce was awarded the prestigious Order of Mercy. At the ceremony Lord Lingfield, President of the League of Mercy, said: "Mrs Joyce Malpas has done extraordinary work for the welfare of others. She is a marvellous example of someone who has given wonderful service to the community..." Our President Mrs Ann Wickham has added: "Joyce put her heart and soul in all that she did for the Guild and for the Hospital".



([monasteryicons.com](http://monasteryicons.com))

# The Guild of the Royal Hospital of St Bartholomew



## ANNUAL GENERAL MEETING 2017

### MINUTES

OF THE ANNUAL GENERAL MEETING OF THE GUILD OF THE ROYAL HOSPITAL OF ST BARTHOLOMEW,  
MONDAY 23 OCTOBER 2017 AT 2PM IN THE GREAT HALL, ST BARTHOLOMEW'S HOSPITAL

#### 1 Chairman's Welcome – Mr Patrick Jennings

Mr Patrick Jennings welcomed Mrs Wendy Parmley, The Lady Mayoress, and Mrs Fiona Adler and Mrs Emma Redcliffe the Shrieval Consorts, as well as all volunteers, members, committee members, guests and relatives to the meeting. The assembled company numbered approximately fifty attendees.

#### Apologies for absence

Apologies had been received from Mrs Ann Wickham, President, and from a further 25 members and friends of the Guild.

#### President's Address

In her absence, Mrs Ann Wickham's Address was read by Mrs Wendy Mead, OBE, CC, trustee of the Guild.

"Three weeks ago, on 3 October, we were honoured by the visit of our patron, HRH The Duke of Gloucester, to open our newly-refurbished shop in the atrium of the George V block, which he did with great ceremony by cutting a blue ribbon (*with surgical scissors?*). He was presented with a framed photograph of his mother, who was then The Duchess of Gloucester, inaugurating the canteen trolley service in 1950. He also visited two of the new departments in the hospital, The Princess Alice Garden, and stayed to tea and talked to the volunteers.

Barts Guild shops have a peripatetic history since 1940 when Barts Bazaar was opened at 56 Little Britain (home of Hogarth's sisters in the 1740s). It supplied clothes and household goods to people whose homes had been bombed and who had lost all their possessions. Sadly it was bombed in 1944. Several more shops and the trolley service followed in various locations until this venture, our ninth location. We do thank all our past and present volunteers, organisers and knitters who have made such a success of this enterprise. And above all we thank our customers, without whom we could not exist.

2017 is the anniversary of many significant occasions: it is the 500<sup>th</sup> anniversary of the Reformation and the 90<sup>th</sup> of the Russian Revolution, both significant events in fighting for principles and rights. In October 1992, 25 years ago, the Tomlinson Report was published, pronouncing the 'death sentence' of half the London teaching hospitals, including Barts. Once the initial shock had passed, Barts medical staff, nurses, the Guild and anyone connected with this great hospital were galvanized into action. Mrs Wendy Mead inaugurated the Save Barts Campaign and in 1998 Barts was saved after six years of non-stop campaigning.

Another interesting anniversary which can be remembered today, on 23 October 1917, the Eaton Square house of our founding president, Lady Sandhurst, was described as being "badly injured in a Zeppelin air raid". Fortunately Lady Sandhurst was unhurt.

Meanwhile the Guild continues to grow from strength to strength thanks to wise leadership and careful management, a dedicated volunteer workforce, the support of all our members and friends and our own ever-optimistic faith in the future. We have always moved and acted with the changing times whether medical, social or political, whilst upholding our most valued traditions and not forgetting our history. We are constantly aware that today is the link between yesterday and tomorrow and are always looking beyond the next horizon."

Following the President's Address, representatives of the Guild Volunteers presented flowers to The Lady Mayoress and Shrieval Consorts. Flowers were also presented to the following in recognition of their fifty years of service to the Guild: Gillian Anderson, Margaret Gillett and Mary Kelsey Fry.

## **2 Minutes**

The Minutes of the AGM held on 20 October 2016 were approved as a correct record.

## **3 Annual Report and Accounts 2016-17**

The incoming Hon Treasurer, Mr Keith Bottomley CC, presented the statutory accounts for the 12 months to March 2017 and the Balance Sheet as at 31 March 2017, giving credit to the outgoing Hon Treasurer, Mr Tony Dickenson for their preparation. The accounts had been reviewed by the Independent Examiner, Geoffrey Frost of Blue Spire Ltd, and they comply fully with FRS102 and the Charities Act 2011.

The accounts show a profit of £3,065 for the year after distributing grants of £18,527. Total Charity Funds had increased from £560,887 at 31 March 2016 to £563,952 at 31 March 2017. Shop takings had continued to improve and, at £146,005, are up 12% on the previous full year. Much credit was due to the Guild volunteers for their hard work in the shop and on the trolley service. Expenses increased during the year due to the investment in the new shop till, IT support and the complete construction of a new website.

The Guild's new investment account set up with CCLA in September of last year with £400,000 returned income of £6,581 which can be expected to increase based on a full 12 month period. The value of these investments rose by £11,782 in the year to £411,311. This increase in the value of investments, together with an additional distribution of £13,980 from the estate of the late Nellie Fiorentini and a generous donation of £2,500, helped to cover the costs of the shop till and website.

The meeting voted to adopt the Annual Report and Accounts 2016-17.

## **4 Election of Officers and Committee Members**

### **4.1 Officers**

On the recommendation of the Chairman and Committee of Management, the meeting approved the following: the annual re-election of Sir Marcus Setchell KCVO as Vice-Chairman and Mrs Jenny Jeyarajah as Hon Secretary of the Guild, and the election of Mr Keith Bottomley, CC as Hon Treasurer for an initial period of three years. The resignation of the previous Hon Treasurer, Mr Tony Dickenson, was noted.

### **4.2 Members of the Committee of Management**

The appointment as trustees of the following was approved for an initial period of three years: Mr James Ballinger, Ms Belinda Dee, Mr Chris Hayes, Mr Adrian Stirrup and Mrs Hilary Tarr. The re-election of Mrs Lynne Warnock was approved. The retirements of Dr David Best and Dr Elizabeth Sparrow were noted.

## **5 Chairman's Report – Mr Patrick Jennings**

The Chairman outlined pleasing developments which had taken place throughout the year, mentioning in particular the new Guild website, the re-fitted Guild Shop recently opened by HRH The Duke of Gloucester, and increased Guild student membership amongst Barts medical students.

Following Christine Ashby's decision to retire as Guild Shop Manager, he thanked her for all that she had done for the Shop and paid tribute to her commitment to the Guild over the past twelve years.

He emphasised the Guild's determination to advertise its grant-giving capability so that an increased number of patients and staff within the hospital can benefit from the Guild's grants.

The Chairman expressed sincere thanks to retiring officers and trustees, and welcomed incoming personnel as named above. He also thanked the Guild's former Administrator, Helen Cooper, who retired in June 2017. Special thanks were given to the Guild's President, Ann Wickham, and also to trustee Wendy Mead and Immediate Past Chairman, Andrew Phillips, for their valuable support and assistance over the past year.

Finally and especially, he thanked all the current volunteers, including those in the shop and trolley service, the Guild's generous donors and sponsors, Barts Health and The Barts Charity for their encouragement, and all members, friends and supporters of the Guild, for their combined contribution

which enables the Guild to exist and function for the benefit of patients and staff of the hospital.

## **6 Forthcoming events**

Lord Mayor's Show: Saturday 11 November 2017

Christmas Concert: Tuesday 5 December 2017 in the Great Hall

AGM 2018: Thursday 25 October

## **7 Presentation of Certificates by the Lady Mayoress, Mrs Wendy Parmley**

The Lady Mayoress presented long service certificates to Guild volunteers as follows:

**5 years:** Rodger Ball, Rita Buttigieg, Amanda Handley, Stephanie Kerstein, Valeria Locatelli, Janina Pogorzelski

**10 years:** Sue Boswell, Sylvia Reed

**15 years:** Valerie Luxton, Daniel Williams

**50 years:** Gillian Anderson, Mary Kelsey Fry, Margaret Gillett.

### **Address by the Lady Mayoress, Mrs Wendy Parmley**

Mrs Parmley thanked the Guild for her invitation to the AGM. She expressed her readiness to celebrate the commitment of volunteers, not only at Barts but also in the wider City of London, citing the annual value of volunteers as £23m (*Office for National Statistics*). She recognised the enormous benefit of the shop and trolley service to patients and staff alike, thanking all those who contributed so much. She congratulated the Guild on its long-standing connection to the Trust, and complimented the redesign of the shop, the new website and also the Guild's involvement with students in the medical school.

After the address, Wendy Mead expressed her thanks to The Lady Mayoress.

## **8 Any other business – Mr Patrick Jennings**

### **Thanks are recorded for those who have helped organise the following at this year's AGM:**

The souvenir stall, the flowers, administrative support and event management, the raffle, the Great Hall staff for catering for the occasion, the saxophonist for musical accompaniment and all other contributors.

### **All then enjoyed a talk from our Guest Speaker – Sir Marcus Setchell, KCVO**

The speaker was welcomed by Wendy Mead and introduced by Andrew Phillips (Immediate Past Chairman). Sir Marcus gave a fascinating talk entitled: Royal Barts, Royal Births, Royal Doctors: A cavalcade of history, in which he traced the numerous connecting strands, including his own career, between obstetricians trained at Barts, royal pregnancies and their uncertain outcomes commencing with the reign of Henry VIII, and the birth of royal children up to that of Prince George. After the talk, thanks were expressed to Sir Marcus by Ian McDowell, trustee.

At the end of the afternoon, the souvenir stall and the raffle were made available to members and guests.

~~~~~

# Report of the Honorary Treasurer

## Report of the Honorary Treasurer for the year ended 31 March 2018



The financial statements for the year to 31 March 2018 show the Guild's finances to be in good shape. They have been reviewed by the Finance and Accounts Committee and approved by the Management Committee. Independent examination has been completed by Blue Spire Ltd resulting in a clean bill of health.

Total expenditure exceeded total income by £14,118 but this was after £27,849 of non-recurring costs for the shop refurbishment and new website plus £8,717 for professional fees. Grants made in the year were £23,457, an increase of 26% on the previous year.

Total charity funds at 31 March 2018 were £549,834. All, apart from £1,583 re Chris Davies legacy, are unrestricted funds. During the year, £25,000 has been transferred from restricted to unrestricted funds in respect of Penny Wainwright's donations in accordance with Penny's clear wish that these funds should be treated as such by the Guild.

The Guild's investments have increased in value over the year by £8,574 and have, in addition, generated income of £14,677, an income yield of 3.6%.

Shop sales are broadly in line with the prior year. 25% of these were via card which is in line with the previous year and around 10% of sales were conducted via the trolley.

A full physical stock count was completed at the end of the financial year and a valuation calculated based on individual item costs.

Donations totalled £16,712 and were boosted versus last year with corporate donations totalling £5,000. The Queen Mary Student Union also made a donation of £2,946. Subscriptions for the year were broadly in line with the prior year. Not all subscriptions attract gift aid. The total gift aid claimed of £8,703 in the year is in respect of the last three years subscriptions plus £7,500 of gift aid on Penny Wainwright's donation. The calendar cost of £2,414 in 2016-17 accounts reflects the cost of calendars given as a free-gift to the Hospital. The full cost of calendars purchased in the year was £3,449 which compares with £3,217 for 2017-18.

The number of bank accounts has been consolidated in the year with the Shop, Souvenir and COIF Deposit accounts closed. An interest-bearing account has been opened at NatWest in order to generate a small income on the Guild's cash balances.

As a consequence of a change in legislation, the Guild has received rates demands in respect of the shop which Barts Health NHS Trust have agreed to pay retrospectively, as well as reimbursing the Guild for the current year's demand of c £6,000 less any efficiency savings that can be made.

There is a requirement under FRS 102 to include a note for basic financial instruments which has been included at Note 19. There is also now a requirement to report the amount of stock recognised as an expense during the year and this has been stated within the Stock Note 12, together with a requirement to have a separate disclosure note for independent examiner's fee Note 8; this has remained unchanged at £780.

Finally, and most importantly, may I record my grateful thanks to Hilary Tarr, Assistant Treasurer and Bookkeeper, for all her hard work and diligent management of all our financial transactions. I just do the easy bit and produce the accounts from Hilary's excellent records.

**Keith Bottomley CC**  
**Honorary Treasurer**

## **Independent Examiner's Report to the Trustees of The Guild of the Royal Hospital of St Bartholomew**

I report to the charity trustees on my examination of the accounts of the charity for the year ended 31 March 2018.

### **Responsibilities and basis of report**

As the charity's trustees you are responsible for the preparation of the accounts in accordance with the requirements of the Charities Act 2011 ('the Act').

I report in respect of my examination of the charity's accounts carried out under section 145 of the Act and in carrying out my examination I have followed all the applicable Directions given by the Charity Commission under section 145(5)(b) of the Act.

### **Independent examiner's statement**

I have completed my examination. I confirm that no material matters have come to my attention in connection with the examination giving me cause to believe that in any material respect:

1. accounting records were not kept in respect of the charity as required by section 130 of the Act; or
2. the accounts do not accord with those records[; or
3. the accounts do not comply with the applicable requirements concerning the form and content of accounts set out in the Charities (Accounts and Reports) Regulations 2008 other than any requirement that the accounts give a 'true and fair view' which is not a matter considered as part of an independent examination.

I have no concerns and have come across no other matters in connection with the examination to which attention should be drawn in this report in order to enable a proper understanding of the accounts to be reached.



Geoffrey Frost BSc(Hons) FCA  
Blue Spire Limited  
South Pallant  
Chichester  
West Sussex  
PO19 1SY

Date

6 August 2018

# THE GUILD OF THE ROYAL HOSPITAL OF ST BARTHOLOMEW

## FINANCIAL STATEMENTS FOR THE YEAR ENDED 31 MARCH 2018

### All funds Year Ended 31 March 2018

		Unrestricted Funds	2017-18 Restricted Funds	Total	2016-17 Total Funds
	Notes	£	£	£	£
<b>Income and Endowments from:</b>					
Donations and Legacies	2	25,484	-	25,484	21,898
Charitable activities	3	144,328	-	144,328	148,559
Other trading activities	4	5,393	-	5,393	5,738
Investments	5	14,677	-	14,677	7,333
<b>Total income</b>		<b>189,882</b>	<b>-</b>	<b>189,882</b>	<b>183,528</b>
<b>Expenditure on:</b>					
Raising funds	6	5,852	-	5,852	5,061
Charitable activities	7	202,094	4,628	206,722	187,184
<b>Total expenditure</b>		<b>207,946</b>	<b>4,628</b>	<b>212,574</b>	<b>192,245</b>
Net gains on investments	11	8,574	-	8,574	11,782
<b>Net income</b>		<b>(9,490)</b>	<b>(4,628)</b>	<b>(14,118)</b>	<b>3,065</b>
<b>Transfers between funds</b>	16	25,000	(25,000)	-	-
<b>Net movement in funds</b>		<b>15,510</b>	<b>(29,628)</b>	<b>(14,118)</b>	<b>3,065</b>
<b>Reconciliation of funds:</b>					
Total funds brought forward		532,741	31,211	563,952	560,887
<b>Total funds carried forward</b>		<b>548,251</b>	<b>1,583</b>	<b>549,834</b>	<b>563,952</b>

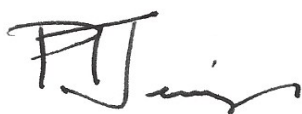
**THE GUILD OF THE ROYAL HOSPITAL OF ST BARTHOLOMEW**  
**CONSOLIDATED FINANCIAL STATEMENTS FOR THE YEAR ENDED 31 MARCH 2018**

**Balance Sheet as at 31 March 2018**


			<b>2017-18</b>	<b>2016-17</b>
	<b>Notes</b>		<b>£</b>	<b>£</b>
<b>Financial instruments</b>	19			
Investments	11		422,073	411,311
		Total investments	422,073	411,311
<b>Current assets</b>				
Stocks	12		8,406	8,642
Debtors	13		5,079	4,613
Cash at bank and in hand	14		134,489	146,935
		<i>Total current assets</i>	<b>147,974</b>	<b>160,190</b>
<b>Liabilities</b>				
Creditors: amounts falling due within one year	15		20,213	7,549
		<i>Net Current Assets</i>	127,761	152,641
		<b>Total Net Assets</b>	<b>549,834</b>	<b>563,952</b>
<b>The Funds of the Guild of the Royal Hospital of St Bartholomew</b>				
Restricted income funds	16		1,583	31,211
Unrestricted funds	16		548,251	532,741
		<b>Total charity funds</b>	<b>549,834</b>	<b>563,952</b>

These financial statements have been prepared in accordance with the Financial Reporting Standard 102 SORP.

Approved by the trustees on 19 July 2018 and signed on their behalf



**Patrick Jennings**  
**Trustee**



**Keith Bottomley CC**  
**Trustee**

# **THE GUILD OF THE ROYAL HOSPITAL OF ST BARTHOLOMEW**

## **FINANCIAL STATEMENTS FOR THE YEAR ENDED 31 MARCH 2018**

### **Notes to the Accounts**

#### **1. Accounting policies**

##### **General information, scope and basis of the financial statements**

The Guild of the Royal Hospital of St Bartholomew is an unincorporated charity registered in England and Wales under a constitution with the charity number 251628. The address of the principal office is given in the charity reference and administrative details page and the nature of the charity's operations and principal activities are provided in the Report of the Trustees.

The charity constitutes a public benefit entity as defined by FRS 102. The financial statements have been prepared in accordance with Accounting and Reporting by Charities: Statement of Recommended Practice applicable to charities preparing their accounts in accordance with the Financial Reporting Standard applicable in the UK and Republic of Ireland (FRS 102) issued on 16 July 2014 (as updated through Update Bulletin 1 published on 2 February 2016), the Charities Act 2011 and UK Generally Accepted Practice as it applies from 1 January 2015.

The financial statements are prepared on a going concern basis under the historical cost convention, modified to include certain items at fair value. The financial statements are presented in sterling which is the functional currency of the charity and rounded to the nearest pound.

The charity has applied Update Bulletin 1 as published on 2 February 2016 and does not include a cash flow statement on the grounds that it is applying FRS 102 Section 1A.

##### **Incoming resources**

All incoming resources are included in the Statement of Financial Activities (SoFA) when the charity is legally entitled to the income after any performance conditions have been met, the amount can be measured reliably and it is probable that the income will be received.

For donations to be recognised the charity will have been notified of the amounts and the settlement date in writing. If there are conditions attached to the donation and this requires a level of performance before entitlement can be obtained, then income is deferred until those conditions are fully met or the fulfilment of those conditions is within the control of the charity and it is probable that they will be fulfilled.

For legacies, entitlement is the earlier of the charity being notified of an impending distribution or the legacy being received. At this point income is recognised. On occasion legacies will be notified to the charity; however it is not possible to measure the amount expected to be distributed. On these occasions, the legacy is treated as a contingent asset and disclosed.

Income from trading activities includes income earned from fundraising events and trading activities to raise funds for the charity. Income is received in exchange for supplying goods and services in order to raise funds and is recognised when entitlement has occurred.

Interest income is recognised using the effective interest method and is recognised as the charity's right to receive payment is established.

##### **Resources expended**

All expenditure is accounted for on an accruals basis and has been classified under headings that aggregate all costs related to the category. Expenditure is recognised where there is a legal or constructive obligation to make payments to third parties, it is probable that the settlement will be required and the amount of the obligation can be measured reliably. It is categorised under expenditure on charitable activities and includes grants to organisations and the cost of administering the activity of the charity.

Grants payable to third parties are within the charitable objectives. Where unconditional grants are offered, this is accrued as soon as the recipient is notified of the grant, as this gives rise to a reasonable expectation that the recipient will receive the grant. Where grants are conditional relating to performance then the grant is only accrued when any unfulfilled conditions are outside of the control of the charity.

Support costs are those that assist the work of the charity but do not directly represent charitable activities and include office costs, governance costs and administrative payroll costs. They are incurred directly in support of expenditure on the objects of the charity. Support costs are allocated to expenditure on charitable activities on the basis that this is the sole activity of the charity.

Governance costs are those incurred in the governance of the charity and primarily associated with the constitution and statutory requirements.

### **Employee benefits**

When employees have rendered service to the charity, short-term employee benefits to which the employees are entitled are recognised at the undiscounted amount expected to be paid in exchange for that service.

### **VAT**

The charity is registered for VAT and prepares returns currently under the Flat Rate Scheme for small businesses. On this basis costs are recorded inclusive of VAT within the SoFA, and income is reduced by the VAT payable at a rate of 4% within the SoFA.

### **Investments**

Investments are recognised initially at fair value which is normally the transition price excluding transaction costs. Subsequently they are measured at fair value with changes recognised in 'Net gains/(losses) on investments' in the SoFA if the shares are publicly traded or their fair value can otherwise be measured reliably. Other investments are measured at cost less impairment.

### **Stocks**

Stocks are stated at the lower of cost and estimated selling price less costs to complete and sell. Cost includes all costs of purchase, costs of conversion and other costs incurred in bringing stock to its present location and condition. Provision is made for damaged, obsolete and slow-moving stock where appropriate.

### **Debtors receivable and creditors payable within one year**

Debtors and creditors with no stated interest rate and receivable or payable within one year are recorded at transaction price. Any losses arising from impairment are recognised in expenditure.

### **Cash and cash equivalents**

Cash and cash equivalents comprise cash on hand and call deposits, and other short-term highly liquid investments that are readily convertible to a known amount of cash and are subject to an insignificant risk of change in value.

### **Taxation**

The charity is considered to pass the tests set out in sections 521 to 536 Income Tax Act 2007 (ITA 2007); as such no income tax is payable on the charity's activities.

### **Fund accounting**

General funds are unrestricted funds which are available for use at the discretion of the trustees in furtherance of the general objectives of the charity and which have not been designated for other purposes.

Restricted funds are funds which are to be used in accordance with specific restrictions imposed by donors or raised by the charity for particular purposes. The cost of raising and administering such funds is charged against the specific fund. The aim and use of each restricted fund are set out in the notes to the financial statements.

### Going concern

The financial statements have been prepared on a going concern basis as the trustees believe that no material uncertainties exist. The trustees have considered the level of funds held and the expected level of income and expenditure for 12 months from authorising these financial statements. The budgeted income and expenditure is sufficient with the level of reserves for the charity to be able to continue as a going concern.

## 2. Donations and legacies

	<b>Unrestricted Funds</b>	<b>Restricted Funds</b>	<b>2018 Total Funds</b>
	<b>£</b>	<b>£</b>	<b>£</b>
Donations	16,712	-	16,712
Legacies	69	-	69
Gift Aid	8,703	-	8,703
	<b>25,484</b>	<b>-</b>	<b>25,484</b>

	<b>Unrestricted Funds</b>	<b>Restricted Funds</b>	<b>2017 Total Funds</b>
	<b>£</b>	<b>£</b>	<b>£</b>
<i>Donations</i>	<i>2,917</i>	<i>-</i>	<i>2,917</i>
<i>Donation by Mrs Penny Wainwright</i>	<i>-</i>	<i>5,000</i>	<i>5,000</i>
<i>Legacy from Mrs Ruth Nellie Fiorentini</i>	<i>13,981</i>	<i>-</i>	<i>13,981</i>
	<b>16,898</b>	<b>5,000</b>	<b>21,898</b>

## 3. Charitable activities

	<b>Unrestricted Funds</b>	<b>Restricted Funds</b>	<b>2018 Total Funds</b>
	<b>£</b>	<b>£</b>	<b>£</b>
Guild shop sales net of VAT	144,328	-	144,328
	<b>144,328</b>	<b>-</b>	<b>144,328</b>

	<b>Unrestricted Funds</b>	<b>Restricted Funds</b>	<b>2017 Total Funds</b>
	<b>£</b>	<b>£</b>	<b>£</b>
<i>Guild shop sales net of VAT</i>	<i>146,005</i>	<i>-</i>	<i>146,005</i>
<i>Restricted grant for shop till</i>	<i>-</i>	<i>2,500</i>	<i>2,500</i>
<i>Restricted grant from Smyrk Trust</i>	<i>-</i>	<i>54</i>	<i>54</i>
	<b>146,005</b>	<b>2,554</b>	<b>148,559</b>

#### 4. Other trading activities

	<b>Unrestricted Funds</b>	<b>Restricted Funds</b>	<b>2018 Total Funds</b>
	<b>£</b>	<b>£</b>	<b>£</b>
Christmas concert	3,329	-	3,329
Membership subscriptions (excluding Gift Aid)	1,750	-	1,750
Raffle at AGM	314	-	314
	<b>5,393</b>	<b>-</b>	<b>5,393</b>

	<b>Unrestricted Funds</b>	<b>Restricted Funds</b>	<b>2017 Total Funds</b>
	<b>£</b>	<b>£</b>	<b>£</b>
<i>Christmas concert</i>	<i>3,684</i>	<i>-</i>	<i>3,684</i>
<i>Membership subscriptions (excluding Gift Aid)</i>	<i>1,799</i>	<i>-</i>	<i>1,799</i>
<i>Raffle at AGM</i>	<i>255</i>	<i>-</i>	<i>255</i>
	<b>5,738</b>	<b>-</b>	<b>5,738</b>

#### 5. Investments

	<b>Unrestricted Funds</b>	<b>Restricted Funds</b>	<b>2018 Total Funds</b>
	<b>£</b>	<b>£</b>	<b>£</b>
Income from investments	14,677	-	14,677
Bank interest	-	-	-
	<b>14,677</b>	<b>-</b>	<b>14,677</b>

	<b>Unrestricted Funds</b>	<b>Restricted Funds</b>	<b>2017 Total Funds</b>
	<b>£</b>	<b>£</b>	<b>£</b>
<i>Income from investments</i>	<i>6,581</i>	<i>-</i>	<i>6,581</i>
<i>Bank interest</i>	<i>752</i>	<i>-</i>	<i>752</i>
	<b>7,333</b>	<b>-</b>	<b>7,333</b>

#### 6. Expenditure on raising funds

	<b>Unrestricted Funds</b>	<b>Restricted Funds</b>	<b>2018 Total Funds</b>
	<b>£</b>	<b>£</b>	<b>£</b>
Cost of calendars*	3,217	-	3,217
Cost of Christmas concert	1,788	-	1,788
Newsletter	847	-	847
	<b>5,852</b>	<b>-</b>	<b>5,852</b>

	<b>Unrestricted Funds</b>	<b>Restricted Funds</b>	<b>2017 Total Funds</b>
	<b>£</b>	<b>£</b>	<b>£</b>
<i>Cost of calendars*</i>	<i>2,414</i>	<i>-</i>	<i>2,414</i>
<i>Cost of Christmas concert</i>	<i>1,623</i>	<i>-</i>	<i>1,623</i>
<i>Newsletter</i>	<i>1,024</i>	<i>-</i>	<i>1,024</i>
	<b>5,061</b>	<b>-</b>	<b>5,061</b>

\* Approximately two-thirds of the calendars formed a free gift to the Hospital.

## 7. Expenditure on charitable activities

	Unrestricted Funds £	Restricted Funds £	2018 Total Funds £
Cost of goods sold	92,825	-	92,825
Shop-related expenses:			
Salary	24,746	-	24,746
Volunteer travel expenses	2,779	-	2,779
Other shop expenses	8,532	-	8,532
Shop refurbishment	11,486	4,628	16,114
Shop telephone costs	547	-	547
Shop consultancy fees	2,625	-	2,625
Recruitment advertising	3,047	-	3,047
Other expenses:			
Administrator fees	2,424	-	2,424
AGM costs	1,722	-	1,722
Professional fees	8,717	-	8,717
Independent Examiner	780	-	780
IT support costs	1,554	-	1,554
Printing, postage, stationery	357	-	357
Insurance	850	-	850
Subscriptions	1,264	-	1,264
Travel expenses	1,185	-	1,185
Website upgrade costs	11,735	-	11,735
Miscellaneous expenses	1,199	-	1,199
Princess Alice Garden maintenance	263	-	263
<b>Total expenses</b>	<b>178,637</b>	<b>4,628</b>	<b>183,265</b>

### Grants paid to St Bartholomew's Hospital

Refreshments for Cancer Transitions course	350	-	350
Christmas gifts for patients (mugs)	1,287	-	1,287
Christmas gifts for patients (drinks sachets)	365	-	365
Black 32" LED television for Critical Care unit, KGV	281	-	281
Complementary Therapies Service treatment products	250	-	250
Barts Guild Elective Grant, Queen Mary UL	750	-	750
Critical Care grant to buy bladder scanner	8,190	-	8,190
Donation towards staff celebrations for CQC results	2,000	-	2,000
Cancer inpatients – PICC Line Covers	113	-	113
St Bartholomew's Heritage (contribution to organisational set-up of Trust)	5,000	-	5,000
Travel expenses to visit sick husband at Barts	300	-	300
Two fridges for patients' beverages, cancer and endocrine ward 5B	198	-	198
Attendance and travel costs for Society of Cardio-thoracic Surgeons Conference	263	-	263
Attendance at 3rd Clinical Update Sleep International Conference	150	-	150
Contribution to wig for cancer patient	260	-	260
Contribution to Barts Radio studio refurbishment	770	-	770
4 red porter chairs to improve the experience of patients going to surgery	2,429	-	2,429
Contribution towards holiday for a family of limited means	500	-	500
<b>Total grants</b>	<b>23,457</b>	<b>-</b>	<b>23,457</b>
	<b>202,094</b>	<b>4,628</b>	<b>206,722</b>

## 7. Expenditure on charitable activities (continued)

	<b>Unrestricted Funds</b>	<b>Restricted Funds</b>	<b>2017 Total Funds</b>
	<b>£</b>	<b>£</b>	<b>£</b>
<i>Cost of goods sold</i>	90,330	-	90,330
<i>Shop-related expenses:</i>		-	
<i>Salary</i>	25,578	-	25,578
<i>Volunteer travel expenses</i>	1,579	-	1,579
<i>Other shop expenses</i>	2,610	-	2,610
<i>Shop till</i>	-	4,854	4,854
<i>Shop telephone costs</i>	510	-	510
<i>Helpers' Tea</i>	504	-	504
<i>Clothing</i>	-	22	22
<i>Recruitment advertising</i>	440	-	440
<i>Other expenses:</i>			
<i>Administrator fees</i>	10,920	-	10,920
<i>AGM costs</i>	2,961	-	2,961
<i>Management Committee costs</i>	186	-	186
<i>Independent Examiner</i>	780	-	780
<i>IT support costs</i>	4,125	-	4,125
<i>Printing, postage, stationery</i>	357	-	357
<i>Insurance</i>	402	-	402
<i>Subscriptions</i>	565	-	565
<i>Travel expenses</i>	1,411	-	1,411
<i>Website upgrade costs</i>	20,033	-	20,033
<i>Miscellaneous expenses</i>	266	-	266
<i>Princess Alice Garden maintenance</i>	225	-	225
<b>Total expenses</b>	<b>163,782</b>	<b>4,876</b>	<b>168,658</b>

### **Grants paid to St Bartholomew's Hospital**

<i>3 heart, weight, blood pressure monitors</i>	10,000	-	10,000
<i>Barts Radio office space improvement</i>	2,000	-	2,000
<i>Christmas gifts for patients</i>	1,474	-	1,474
<i>12 clocks for 6th Floor Intensive care unit</i>	1,197	-	1,197
<i>Matrons Forum conference for 2 Cardiology Matrons</i>	700	-	700
<i>Information packs for Macmillan Cancer Information Centre</i>	658	-	658
<i>Welcome Information desk for volunteers</i>	629	-	629
<i>IPad tablet for Critical Care Audit nurse</i>	339	-	339
<i>10 mattress protectors &amp; 2 radios for Bodley Scott Rooms Hostel</i>	310	-	310
<i>Stamps for patient discharge questionnaires</i>	252	-	252
<i>Treatment products for Complementary Therapy Service</i>	250	-	250
<i>Fridge for Rahere Ward 5b</i>	206	-	206
<i>Clothes for patients in Radiotherapy</i>	300	-	300
<i>5 radios for 6th Floor Intensive care unit</i>	120	-	120
<i>Thermos push button flask for patients</i>	60	-	60
<i>Stereo for Cyberknife Treatment Unit</i>	33	-	33
<b>Total grants</b>	<b>18,528</b>	<b>-</b>	<b>18,528</b>
	<b>182,310</b>	<b>4,876</b>	<b>187,186</b>

## 8. Independent examiner's fees

	<b>Unrestricted Funds</b>	<b>Restricted Funds</b>	<b>2018 Total Funds</b>
	<b>£</b>	<b>£</b>	<b>£</b>
Examiner's fees – examination	780	-	780
	<b>780</b>	<b>-</b>	<b>780</b>

	<b>Unrestricted Funds</b>	<b>Restricted Funds</b>	<b>2017 Total Funds</b>
	<b>£</b>	<b>£</b>	<b>£</b>
Examiner's fees – examination	780	-	780
	<b>780</b>	<b>-</b>	<b>780</b>

## 9. Wages and salary cost

	<b>2018 Total funds</b>	<b>2017 Total funds</b>
	<b>£</b>	<b>£</b>
Gross wages	20,111	19,214
Employer's national insurance costs	1,743	2,707
Employer's pension contributions	2,892	3,658
	<b>24,746</b>	<b>25,578</b>

	<b>2018</b>	<b>2017</b>
Staff numbers:		
Average head count	1	1
Analysed by function:		
Raising funds	1	1
	<b>1</b>	<b>1</b>
Calculated on a full-time equivalent basis, analysed by function:		
Raising funds	1	1
	<b>1</b>	<b>1</b>

The Shop Manager is employed by Barts NHS Trust who invoice Barts Guild for associated wages and salary costs.

There were no employees with emoluments (excluding employer pension costs) above £60,000 in this or the preceding year.

There were no staff to whom retirement benefits accrued under defined contribution schemes in the current or comparative year.

## 10. Related party transactions

No remuneration was paid to trustees during this or the preceding year.

During the year under review one trustee had £278 travel expenses reimbursed (2017: £439).

There were no other transactions with related parties that require disclosure in the financial statements.

## 11. Investments

	<b>2018</b>	<b>2017</b>
	<b>£</b>	<b>£</b>
Investments at market value – brought forward	411,311	-
Additions	2,188	399,529
Change in market value	8,574	11,782
Investments at current market value	<b>422,073</b>	<b>411,311</b>

The charity's investments are held in COIF Charity Investment units.

## 12. Stock

	<b>2018</b>	<b>2017</b>
	<b>£</b>	<b>£</b>
Shop stock	<b>8,406</b>	<b>8,642</b>

The amount of stock recognised as an expense during the year was £92,825.

## 13. Debtors

	<b>2018</b>	<b>2017</b>
	<b>£</b>	<b>£</b>
Accrued income	5,079	4,613
	<b>5,079</b>	<b>4,613</b>

## 14. Cash at bank and in hand

	<b>2018</b>	<b>2017</b>
	<b>£</b>	<b>£</b>
National Westminster account	134,309	143,415
HSBC Shop account	-	250
HSBC Souvenir account	-	902
COIF Deposit account	-	2,188
Shop cash float	180	180
	<b>134,489</b>	<b>146,935</b>

## 15. Current liabilities

	<b>2018</b>	<b>2017</b>
	<b>£</b>	<b>£</b>
Shop creditors	9,935	6,769
Other creditors	10,278	780
	<b>20,213</b>	<b>7,549</b>

## 16. Analysis of net movement in funds

	<b>Total funds brought forward £</b>	<b>Total incoming resources £</b>	<b>Total resources expended £</b>	<b>Transfers between funds £</b>	<b>Total funds carried forward £</b>
<b>Restricted funds</b>					
Penny Wainwright – donation	25,000	-	-	(25,000)	-
Chris Davies legacy	1,583	-	-	-	1,583
Smyrk Trust	4,628	-	(4,628)	-	-
	<u>31,211</u>	<u>-</u>	<u>(4,628)</u>	<u>(25,000)</u>	<u>1,583</u>
<b>Unrestricted funds</b>					
General fund	532,741	189,882	(207,946)	25,000	539,677
Net gains on investments (unrealised)	-	8,574	-	-	8,574
Total unrestricted funds	<u>532,741</u>	<u>198,456</u>	<u>(207,946)</u>	<u>25,000</u>	<u>548,251</u>
<b>Total funds</b>	<b>563,952</b>	<b>198,456</b>	<b>(212,574)</b>	<b>-</b>	<b>549,834</b>

Penny Wainwright's donation has been designated Unrestricted Funds following clarification of the donor's wishes.

## 17. Analysis of net assets between funds

	<b>Unrestricted Funds £</b>	<b>Restricted Funds £</b>	<b>2018 Total Funds £</b>	<b>2017 Total Funds £</b>
Investments	422,073	-	422,073	411,311
Current assets	146,391	1,583	147,974	160,190
Current liabilities	(20,213)	-	(20,213)	(7,549)
	<u>548,251</u>	<u>1,583</u>	<u>549,834</u>	<u>563,952</u>

## 18. Defined contribution pension schemes

The charity makes contributions to a pension scheme on behalf of its shop manager who is employed by Barts Health NHS Trust. The total payable for the year under review was £2,892 (2017: £3,658). There were no amounts outstanding at the end of the current period or comparative financial year.

## 19. Financial Instruments

The carrying amounts of the charity's financial instruments are as follows:

	<b>2018</b>	<b>2017</b>
	<b>Total Funds</b>	<b>Total Funds</b>
	<b>£</b>	<b>£</b>
<i>Financial assets</i>		
Measured at fair value through net income/(expenditure):		
Fixed asset investments	422,073	411,311
	<b>422,073</b>	<b>411,311</b>

The income, expense, net gains and net losses attributable to the charity's financial instruments are summarised as follows:

	<b>2018</b>	<b>2017</b>
	<b>Total Funds</b>	<b>Total Funds</b>
	<b>£</b>	<b>£</b>
<i>Income and expense</i>		
Financial assets measured at fair value through net income/(expenditure):		
Investment income	14,677	7,333
<i>Net gains and losses (including changes in fair value)</i>		
Financial assets measured at fair value through net income/(expenditure)		
Unrealised gains/(losses) on investments	8,574	11,782

Fixed asset investments are held at fair value with valuations obtained using last traded or closing bid market prices available.

~~~~~



Barts Guild collecting boxes can be found on various premises in the vicinity of the Hospital.



# Guild Members and Volunteers 2018

Dr David Abell  
Mr Tamam Abid  
Mr Ali Abo-Ragheef  
Miss Shivanie Acharya  
Mr Joseph Adebayo  
Mr Muaz Ahmad  
Miss Atena Ahmed  
Miss Onyinye Akpenyi  
Mrs Caroline Allington  
Mr Jeshua Amalesh  
Mr Fahimul Amin  
Mr Taha Amir  
Mrs Gillian Anderson  
Mrs Marilyn Anderson  
Mr Kok Han Ang  
Mr Danny Angell-Payne  
Miss Megan Annetts  
Miss Mary Armstrong  
Miss Christine Ashby  
Mr & Mrs J R Aspinall  
Mrs Sandra Assell  
Mr Will Atkins  
Mr William Atkins  
Mrs Marjorie Ayers  
Mr Alexander Badenoch  
Miss Aneesa Baig  
Miss Sheelagh Bailey  
Mr Rodger Ball  
Mr James Ballinger  
Miss Weronika Banda  
Mr Rayyan Barakat  
Miss Anna Barnfield  
Miss Margaret Bates  
Miss Rosalind Bax  
Mrs Sue Bax  
Mr Numan Baydemir  
Miss Farzana Begum  
Mr Stephen Bench  
Ms Amanda Benton  
Miss Zoe Berger  
Mr Leslie Berrie  
Dr David Besser  
Mrs Valerie Besser  
Dr David Best  
Miss Mahima Bhatt  
Miss Roshni Bhudia  
Mrs Louise Biggs  
Mrs Ann Blackledge  
Mr Sumanjeet Bose  
Mrs Sue Boswell  
Mr Keith Bottomley CC  
Mrs Helen Boulton

Mr Derek Boyce  
Mr Rupert Boyce-Bown  
Ms Emma Bradley  
Dr Jeremy Bradley  
Mrs Gill Braithwaite  
Mrs Thas Brar  
Ms Julia Briscoe  
Mr Chad Brooker  
Miss Rebecca Brown  
Miss Ella Brown  
Mr Cameron Bruce  
Miss Emily Budd  
Mr David Bull  
Mr Gabriel Burchell  
Dr Andrew Burnett  
Mrs Lesley Burnett  
Mr Hayan Butt  
Mrs Rita Buttigieg  
Ms Jane Carey-Harris  
Mr Lawrence Carter  
Mr Clyde Castellino  
Miss Stella Cawker  
Miss Suheyra Celik  
Mrs Jill Cevro  
Miss Jacinder Chahal  
Miss Jessica Challenger  
Lady Aileen Chalstrey  
Mr Ian Chambers  
Mr Michael Chan  
Miss Capucine Chapelier De Hesdin  
Dr David Charles  
Mr Jonathan Charnock  
Miss Heather Chen  
Miss Mavis Cheng  
Miss Gwen Cheong  
Mr Byung Choi  
Mr Rakin Choudhury  
Miss Beatrice Choy  
Miss Anne Chua  
Mrs Elizabeth Cleaver  
Mrs Cynthia Cobley  
Mrs Janet Coldstream  
Mr Patrick Coldstream  
Mr Xavier Conner  
Ms Judy Cook  
Mr Thomas Cooke  
Mr Bob Cooper  
Ms Helen Cooper  
Miss Ellie Coote  
Miss Madeleine Corkery  
Miss Costanza Coronelli  
Ms Madeleine Craggs

Mrs Elizabeth Crisp  
Mr Malcolm Crisp  
Ms Bridget Katherine Cullinan  
Mr Conor Czech  
Miss Elisa Dalle Piagge  
Mr Stephen Dar  
Mr Shiv Datta  
Miss Elise Davies  
Ms Maxine Davies  
Mrs Kate Dawson  
Ms Sreva de Luca  
Ms Belinda Dee  
Miss Jiuliana Delmi  
Miss Shahini Desai  
Ms Indu Dev  
Miss Bethany Dewhurst  
Miss Gurleen Dhillon  
Miss Tanvi Dhir  
Mr Naim Dib  
Mr Peter Dib  
Mr Peter Dillon  
Mr David Discalica  
Mr Shaman Dolly  
Mr Russell Donovan  
Mrs Val Doran  
Mr Vishaal Dovedi  
Mrs Pearl Doyle  
Mr Jack Dryburgh-Jones  
Mr Akash Dusoye  
Miss Amy Easthope  
Mr James Eaton  
Mrs Jenny Edmonds  
Miss Georgina Elliot  
Ms Esme Engels  
Ms Lesley Evans  
Ms Sue Evans  
Miss Kanoyin Falay  
Mr Sultan Farooq  
Mrs Hilda Fazzani  
Mr Oscar Fellows  
Miss Alison Fenwick  
Mrs Sadie Ferris  
Mr Nicholas Fine  
Mrs Anthea Finn  
Mr Geoffrey Finn  
Ms Rosie Firth Burnside  
Miss Rebecca France  
Mr Niroshan Francis  
Mr David Frank  
Miss Zoe Gabriel  
Miss Subhasheene Ganesan  
Miss Sandra Gann

Mr Laurence Gardner  
 Mrs Patricia Gardner  
 Miss Jennifer Gaze  
 Mr Sundeep Ghuman  
 Mrs Sue Gilbert  
 Ms Patricia Gillen  
 Mrs Margaret Gillett  
 Mr Cedric Gilson  
 Miss Lorna Glace  
 Ms Bubura Yee Ning Goh  
 Ms Monique Gold  
 Miss Caitlin Gordon  
 Mr Matthew Gowshall  
 Mrs Jane Graham  
 Mr Michal Grela  
 Miss Anhya Griffiths  
 Mr Anuj Gupta  
 Mrs Lorna Habart  
 Dr Heather Hackett  
 Mr Nema Hafezi-Bakhtiari  
 Miss Rachael Hall  
 Mrs Elsie Halsey  
 Mrs Ellen Hamer  
 Mrs Daphne Hamilton-Fairley OBE  
 Mrs Sylvia Hampton  
 Mrs Amanda Handley  
 Ms Chris Harocopos  
 Ms Bethan Harris  
 Mr Nicholas Harrison  
 Mr Michael Hayden  
 Mr Chris Hayes  
 Miss Margaret Hazard  
 Mr Paul Heasmer  
 Miss Hannah Henderson  
 Mr David Henry  
 Mrs Margaret Henry  
 Mr Saul Herbert  
 Miss Anna Hicks  
 Ms Jane Hill  
 Mrs Katherine Hill  
 Miss Nicole Hill  
 Mrs Abigail Hinchcliffe  
 Miss Dhruti Hirani  
 Mrs Pauline Hirst  
 Miss Hilary Hiscocks  
 Miss Sian Hobson  
 Miss Josie Hollywood  
 Mr Randeep Hoonjan  
 Professor Sir Deian Hopkin  
 Miss Sophie Hopkins  
 Professor Christopher Hudson  
 Mrs Margaret Hughes  
 Mrs Mary Hunter  
 Mr Aatif Husain  
 Miss Marvi Iftikhar

Miss Farzana Irani  
 Miss Branavy Irayanar  
 Miss Sumaya Islam  
 Miss Anita Iyer  
 Mr Rashaan Jackson-Wade  
 Miss Farah Jaffar  
 Miss Ramsha Jamal  
 Miss Olive James  
 Miss Chris Jaques  
 Miss Zibad Javed  
 Mr Hammad Jeilani  
 Mrs Jayne Jennings  
 Mr Patrick Jennings  
 Mr Arjun Jeyarajah  
 Mrs Jenny Jeyarajah  
 Miss Rebecca John  
 Mrs Joan Johnson  
 Mr Ross Johnston  
 Mr Harry Jolley  
 Ms Annwen Jones  
 Miss Gloria Jones  
 Mr Aakash Joshi  
 Miss Sindhuja Jothimurugan  
 Mr Lucas Jullian  
 Miss Mandeep Kang  
 Mr Amar Kanzaria  
 Mr Elshad Karbasi  
 Miss Neringa Karpaviciute  
 Miss Harman Kaur  
 Mrs Mary Kelsey Fry  
 Ms Stephanie Kerstein  
 Mrs Jane Keyes  
 Mr Ameer Hamid Khan  
 Miss Zara Khan  
 Miss Alison Knapp  
 Mr Asher Knight  
 Mr Benjamin Koetsier  
 Mrs Patricia Kraft  
 Mr Rob Krug  
 Mr Sagar Kulkarni  
 Mr Varun Vijay Kumar  
 Mr David L'enclume  
 Miss Neha Lalani  
 Miss Joanna Lampard  
 Ms Sandy Lane  
 Mrs Joyce Larby  
 Mr Mehran Lashari  
 Mr Edward Lau  
 Mr Edward Laurent  
 Mr Chris Law  
 Mrs Elaine Law  
 Miss Anna Leadley  
 Miss Esther Lee  
 Mr Jen Wei Lee  
 Miss M A Lennon

Mrs Patricia Lettin  
 Miss Vicky Li  
 Miss Kai Liang  
 Miss Su-Yi Liew  
 Miss Marie Lim  
 Mrs Sarah Lister  
 Miss Xinting Liu  
 Miss Jane Lloyd  
 Mrs Wendy Lloyd-Bailey  
 Miss Natalie Lloyd-Gale  
 Ms Valeria Locatelli  
 Mr Thomas Longbottom  
 Mr Timothy Loong  
 Mrs Sybil Love  
 Miss Lorena Lucioli  
 Miss Valerie Luxton  
 Ms Emma Lyne-Smith  
 Mr Abhiram Magesh  
 Miss Naheed Malik  
 Mr Mohammad Hamzah Mansoor  
 Ms Katarzyna Marasinska  
 Mr Stephen Marsh  
 Mr Paul Mascard  
 Mrs Susan Mason  
 Mrs J Matthews  
 Miss Ashwini Maudhoo  
 Mr Adrian McCabe  
 Mr Ian McDowell  
 Mr Ruari McGowan  
 Miss Frances McHugh  
 Mrs Mary McNab Jones  
 Mrs Wendy Mead OBE CC  
 Mr David Mears  
 Mr Aidan Mellan  
 Miss Esther Mitchell  
 Hon. Sir Stephen Mitchell  
 Mr Sean Morgan  
 Mrs Jean Morris  
 Mr Phil Moss  
 Mr Terence Moss  
 Dr John Munns  
 Mr Conor Murphy  
 Mr Mark Murphy  
 Miss Sarah Mustak  
 Mr Harris Nageswaran  
 Miss Gurveen Nagi  
 Mr Jayesh Nagpol  
 Mr Yash Narayan  
 Mrs Pamela Nash  
 Mrs Jean Nathan  
 Mr Fuzail Nawab  
 Miss Amira Nazzal  
 Miss Emma Norris  
 Mr Matt Nottage  
 Mr Jim O'Hagan

Ms Jan O'Neill  
 Mrs Margaret Oates  
 Miss Giulia Olayemi  
 Miss Yasmin Oniyangi  
 Miss Favour Onwudiwe  
 Miss Miski Osman  
 Dr William Owen  
 Mr Ismail Ozsoykal  
 Miss Shraya Pandya  
 Miss Manasi Panshikar  
 Mrs Barbara Pare  
 Miss Hannah Parker  
 Mrs Jane Parker  
 Miss Alice Parry  
 Miss Alisha Patel  
 Mr Avinas Patel  
 Miss Jayana Patel  
 Mr Krish Patel  
 Mr Priyesh Patel  
 Dr Andrew Pembroke  
 Dr Jacqueline Pembroke  
 Lady Judy Percival  
 Miss Ameshka Perera  
 Mr Mark Petrarca  
 Mr Andrew Phillips  
 Mrs Claire Phillips  
 Mr Edward Phillips  
 Ms Elana Pickering  
 Miss Parisa Pirjamali  
 Ms Janina Pogorzelski  
 Miss Charlotte Pollock  
 Miss Rachel Poustie  
 Mr Rejin Pradeep-Kumar  
 Miss Molly Price-Smith  
 Mr Divesh Prithviraj  
 Dr Nina Purvis  
 Miss Vaishnavi Ragupathy  
 Miss Anuska Rajen  
 Miss Camilla Ramus  
 Miss Victoria Randall  
 Mrs Norah Reed  
 Mr William Rees  
 Ms Daisy Riddle  
 Mrs Angela Ringer  
 Ms Sara Rital  
 Mrs Jean Ritchie  
 Mr Joshua Roberts  
 Miss Fern Robertson  
 Miss Jackie Roe  
 Miss Margaret Roles  
 Miss Luiza Romanowska  
 Miss Ann Rose  
 Mr Michael Rosen  
 Mrs June Rosenwould

Mrs Jean Rowland  
 Ms Jill Rowlinson  
 Mr Aleksander Rula  
 Ms Helen Rumbelow  
 Mrs Margaret Rumsey  
 Mr Ray Russo  
 Miss Sahel Saadat  
 Mr Aamir Saiyed  
 Mrs Jacqueline Sanderson  
 Miss Nichola Sarathchandra  
 Mr Mat Sarvanantha  
 Miss Gauri Saxena  
 Mr Christoph Schmidt  
 Miss Nadine Schottler  
 Sir Marcus Setchell KCV0  
 Mr Neal Shah  
 Miss Rishita Shah  
 Mr Vinay Shah  
 Ms Pui Yan Sham  
 Mr William Shand  
 Mr Sathyam Sharma  
 Dr Elizabeth Shaw  
 Miss Maria Sheikh  
 Mrs Alison Shepherd  
 Dr Stephen Shepherd  
 Mrs Pat Simmonds  
 Dr Paul Simmons  
 Dr Andrew Smith  
 Mr Joseph Smith  
 Mrs Sue Smith  
 Ms Elisabeth Smyth  
 Miss Catrin Sohrabi  
 Miss Micheia Sorbini  
 Dr Elizabeth Sparrow  
 Miss Isabella Spence  
 Mr Danujan Sriranganathan  
 Mrs Janet Stinton  
 Mr Robert Stinton  
 Mr Adrian Stirrup  
 Mrs Rosamund Stocks  
 Mrs Gisela Stone  
 Miss Laura Stone  
 Miss Gemma Stonier  
 Mr Muhammed Suleman  
 Mrs Clare Sweatman  
 Mrs Hilary Tarr  
 Miss Tillana Taruas  
 Miss Umamah Tarvala  
 Ms Anne-Marie Taylor  
 Miss Sasha-Nicole Temple  
 Miss Jennifer Tew  
 Mr Tun Tha  
 Miss Sarmila Tharmakulasingam  
 Mr Lewis Thomas

Mrs Cynthia Thompson  
 Miss Olivia Thornett  
 Mr Jack William Tooze  
 Miss Bryony Torble  
 Mr Mubeen Toufiq  
 Dr Audrey Tucker  
 Mr Ian Tunstall  
 Miss Maisha Umama  
 Miss Daisy Umelo  
 Mr James Ung  
 Mr Jan Valadao Spoorenberg  
 Mrs Jane Valentine  
 Mr Pritesh Varsani  
 Mr Abhilash Vasan  
 Dr Sarah Vepers  
 Miss Maria Vittoria Mastantuono  
 Mr Jak Vohlidka  
 Mr Elias Vouzounis  
 Mr Martin Wainwright  
 Mrs Penny Wainwright  
 Miss Mary Walker  
 Mr Tom Walls  
 Mrs Lynne Warnock  
 Mr David Way  
 Miss Eika Webb  
 Dr Judith Webb  
 Miss Niamh Whelan  
 Miss Gemma White  
 Dr Veronica White  
 Miss Katherine Wichmann  
 Mrs Ann Wickham  
 Mr William Wicks  
 Ms Helen Wilding  
 Ms Maya Wiles  
 Mr Daniel Williams  
 Mr Samson Asher Williams  
 Miss Siobhan Williams  
 Ms Harriet Williams-Gunn  
 Miss Jemimah Williams-Rumble  
 Mr Michael Willis  
 Mr Joshua Wortelhock  
 Mrs Kathy Wrennall  
 Mrs Margaret Wyatt  
 Mr Yuanchow Xue  
 Mr Gregory Yates  
 Mr Tian Ren Ye  
 Ms Lucy Yendole  
 Miss Rachel Young  
 Miss Dorna Zarei  
 Miss Nong Zhang  
 Mr Yuxuan Zhang  
 Mr Hongguang Zhu

# Our Corporate Supporters

The Barts Guild wishes to place on record our thanks to the following for their support:

SAUNDERSON  
HOUSE

**Saunderson House Ltd**

Financial planning and investment advice

M&G  
INVESTMENTS

TFW  
P R I N T E R S

**TFW Group**

Providing corporate customer communications and specialising in print, design and digital

elior

**Elior Group**

The Whole Experience

EY Building a better  
working world

**EY**

A global leader in assurance, tax, transaction and advisory services.



### **BARTS GUILD**

St Bartholomew's Hospital  
West Smithfield  
London EC1A 7BE

**Telephone: 020 3765 8700**

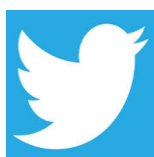
**Email: bartsguild@aol.com**

### **Contact Telephone numbers**

**Guild Shop 020 3465 6382**

**Head of Volunteering, Barts Health NHS Trust  
020 3765 8896**

**[www.bartsguild.org.uk](http://www.bartsguild.org.uk)**



**Barts Guild Facebook page**

**A way to keep in touch with the Guild**

**<https://www.facebook.com/BartsHospitalGuild>**

**Twitter @BartsGuild**