



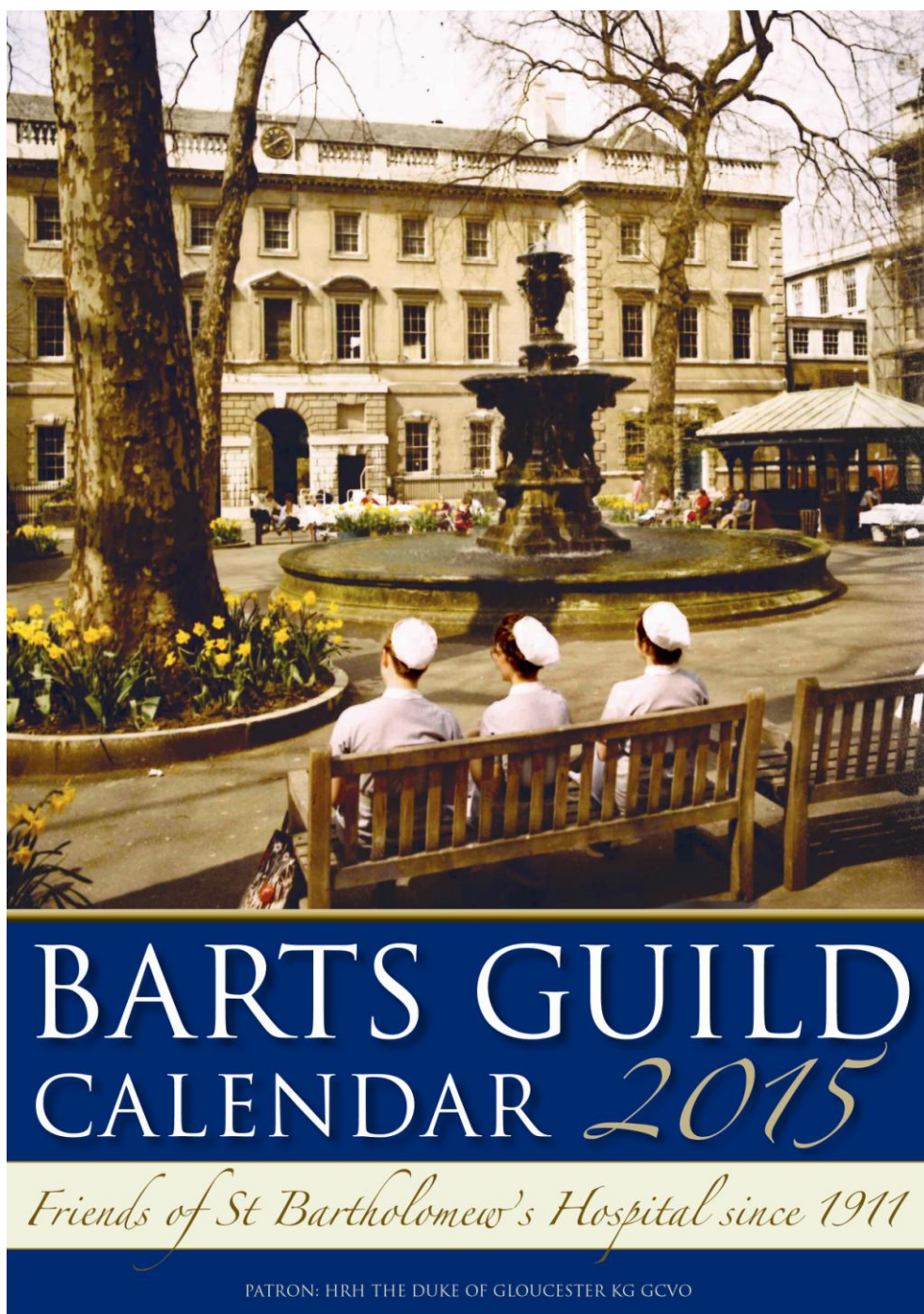
Barts Guild

Friends of St Bartholomew's Hospital since 1911

One Hundred and Second

Annual Report and Accounts

2013–14



The Barts Guild Calendar 2015

The Guild Calendar 2015 will be on sale in the Guild Shop, KGV Building, from mid-October 2014;
or by post at £5 each plus £2 P&P for up to two copies (UK only), from Barts Guild Shop,
King George V Building, St Bartholomew's Hospital, London EC1A 7BE.

Please send cheque with order, payable to 'Barts Guild'.

The Shop will also have an attractive selection of Guild Christmas cards from early October.

*All proceeds from sales of Calendars and Christmas cards will help our work supporting
Barts Hospital, its patients and staff*



Barts Guild

Friends of St Bartholomew's Hospital since 1911

Annual Report and Accounts 2013-14

Contents

The Guild of the Royal Hospital of St Bartholomew	2
Report of the Trustees	3
The Chairman writes	9
Guild Members 2014	11
Annual General Meeting 2013 Minutes	13
AGM Presentation by the Dean of St Paul's	17
Accounts for the period 1 April 2013 – 31 March 2014	21
Report of the Honorary Treasurer ...	21
Independent Examiner's Report ...	22
Detailed Statement of Financial Activity ...	23
Notes to the Accounts ...	24

www.bartsguild.org

The Guild wishes to express grateful thanks to TFW Printers
(sales@tfwprinters.co.uk) for their help in producing this Annual Report

Annual Report edited by Sue Boswell

THE GUILD OF THE ROYAL HOSPITAL OF ST BARTHOLOMEW

Registered Charity No 251628

Affiliated to ATTEND – Enhancing Health and Social Care. Locally

PATRON

HRH The Duke of Gloucester KG GCV

PRESIDENT

Mrs Ann Wickham

VICE-PRESIDENTS

The Lady Mayoress

Lady Davis
Mrs Margaret Gillett
Mrs Pauline Hirst
Mrs Daphne Hamilton Fairley
Mrs Mary Kelsey Fry
Mrs Joyce Malpas
Mrs Mary McNab Jones
Mr J P Nichol
Lady Percival
Mrs Alison Shepherd
Dr Audrey Tucker

OFFICERS OF THE GUILD 2013-14

Chairman

Mr Andrew Phillips

Vice-Chairman

Sir Marcus Setchell KCV

Honorary Secretary

Mrs Jenny Jeyarajah

Honorary Treasurer

Mr Michael Hayden

Honorary Treasurer elect

Ms Susan Bunn

COMMITTEE OF MANAGEMENT 2013-14

Ordinary members

Mrs Sue Boswell
Mrs Pearl Doyle
Mrs Sadie Ferris
Mr David Frank
Mr Patrick Jennings
Mrs Wendy Mead CC
Ms Jakki Mellor-Ellis
Ms Jan O'Neill
Miss Niamh Whelan

Ex officio and co-opted members

Mrs Sue Bax
Former Membership Secretary
Mr Malcolm Crisp
Grants Co-ordinator
Miss Tracey Carter, Deputy Chief Nurse
Representative of the NHS Trust
Ms Chris Harocopos
Nominated by the League of Barts Nurses
Professor Christopher Hudson
Immediate Past Chairman
Ms Fiona McArthur
Community Relations Manager, Skanska
Professor David Lowe
Representative of the Rahere Association
Miss Jackie Roe
Princess Alice Garden Co-ordinator
Dr Elizabeth Shaw
Former Trustee
Ms Elisabeth Smyth
Membership Secretary
Ms Sarah Yandell
Volunteer Co-ordinator, Barts Health
NHS Trust [to April 2014]

Also attending meetings

Miss Christine Ashby
Shop Organiser
Ms Amy Cupitt
Administrator [to May 2014]
Ms Helen Cooper
Administrator [from April 2014]

Report of the Trustees 2013-14

The objects of the Guild are to help the Royal Hospital of St Bartholomew by providing:

By personal service and by provision from the charity's funds such amenities for the patients and staff as would not be available to them under the National Health Service;

Such other charitable assistance to the Hospital, its patients, former patients, staff, students and others involved with the affairs of the Hospital as the trustees may determine.

The main activities undertaken by the Guild to carry out these objects for the public benefit are:

- running a general and souvenir shop as an amenity for patients, staff and visitors;
- providing a trolley service for inpatients, selling newspapers, toiletries and books;
- making grants for the provision of appropriate facilities on wards for patients and staff;
- funding the purchase of clinical equipment in appropriate cases.

In order to carry out these activities the Guild collects subscriptions from members, and engages in limited fundraising including obtaining sponsorship from commercial companies. We are also pleased to receive donations and legacies.

In relation to all the Guild's activities we have paid due regard to the guidance published by the Charity Commission concerning public benefit.

Revised Constitution

During the course of the year under review the Guild, guided by Trustee David Frank, completed its revision of the Constitution, with the expert assistance of Bates Wells Braithwaite. This was undertaken in order to take account of changing needs, services and specialisms in the Hospital and the NHS Trust; and to bring the Guild into line with the requirements of the Charities Act 2011 and of best practice urged by the Charity Commission. In particular, the Guild noted the need for more flexibility in its ability to provide grants to the Hospital.

Chairman Andrew Phillips wrote: 'The Constitution represents the best statement of purpose of the women and men who have sustained the Guild since 1911. It is the spine around which the Guild's body of activity is wrapped. The old Constitution had served well. It was, furthermore, succinct and readable! It was also too porous for today. A fresh legal platform was constructed to expand the Constitution's objects, provided this undermined in no way the existing purposes. The revised objects are practical and suffused with determination to help others.'

The new Constitution, having been agreed at a reconvened AGM in November 2013, was registered by the Charity Commission in December.

Congratulations



Guild Vice-Chairman Sir Marcus Setchell KCVO, HM The Queen's former Surgeon Gynaecologist, was dubbed a Knight Commander of the Royal Victorian Order by the Duke of Cambridge at Buckingham Palace on 18 March for services to the royal family.

[Photo removed for copyright reasons]

The Management Committee in February congratulated Sir Marcus on this honour, which recognised not only his long service to the royal family but also his distinguished service to Barts and several major London hospitals as well as to charities such as Wellbeing of Women.

Sir Marcus qualified at Cambridge and Barts in 1968 and was a consultant obstetrician and gynaecologist at Barts and the Homerton Hospitals from 1975 to 2000; he became Surgeon Gynaecologist to HM The Queen in 1990, serving until his retirement at the end of 2013.

As well as his services to a number of prestigious hospitals like Barts, the Homerton and Whittington Hospitals and to other medical institutions, Sir Marcus' career has seen him championing Wellbeing of Women, of which he is now President. This is a charity dedicated to improving the health of women and babies across the UK which since 1964 has enabled breakthroughs in obstetrics and gynaecology.

At the same time, he has given dedicated service to his *alma mater*, Barts, where he has served as Chairman of the Governors of the Voluntary Hospital of St. Bartholomew and is Chairman of the Friends of the Great Hall and the Archive of St Bartholomew's Hospital. A long-time Guild supporter, he joined the Trustees in 2009, becoming Vice-Chairman in 2013 in succession to Mrs Wendy Mead CC.



We were delighted to learn of the award of the Order of Mercy to Mrs Joyce Malpas, a Vice-President and former President and former Chairman of the Guild (seen right receiving the medal). This award is one of up to fifty made each year by the League of Mercy for voluntary service assisting in the relief of sickness and suffering over a period of at least seven years. Mrs Malpas joins other Guild volunteers in receiving this prestigious award: Mrs Pauline Hirst, Mrs Elsie Halsey and Mr Malcolm Crisp.



Congratulations are also due to Steve Bench, who retired as a Trustee at the AGM, and to Graham Hamilton, one of Steve's friends, for raising over £2,000 for the Guild by cycling from Land's End to John O'Groats.

The photo shows Steve on an earlier ride.

New Shop

The Chairman (seen here inspecting the exterior of the new Shop premises) was delighted to report early in the year under review that the Barts Health NHS Trust had given the go-ahead for Capital Hospitals Ltd and Skanska Construction to proceed with works to create a new shop for the Guild on the ground floor of the new King George V building – a most satisfactory outcome after a period of uncertainty. The plans provide a welcoming space which will accommodate the combined general and souvenir shops and storage for goods and trolleys.



The Guild was pleased to contribute some £10,000 towards the building and fitting costs, in view of the benefits which a shop in this favourable location would yield over time in sustaining our work for the Hospital. Opening is planned for Autumn 2014. It is possible the Guild may obtain some sponsorship to help the new shop's facility and service.

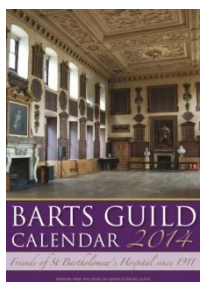
We are most grateful to the Trust Chairman and Chief Executive and to Trust colleagues in the New Hospital Project and construction management team, in particular Graham Pitman and Steve Eames, for their support in bringing about this welcome development. Considerable thanks are due also to Shop Organiser Christine Ashby for her continued hard work and great enthusiasm overseeing shop matters and to all our shop and ward trolley volunteers.

[Photo by Steve Eames showing the new Shop under construction in the Atrium of the redeveloped King George V Building]



Publications and publicity

Calendar 2014



The annual Calendar has established itself on the Guild's list of activities, primarily as a gift to the Hospital (including to inpatients at Christmas) and as a way of raising our profile at Barts, in the Trust and in the local area and more widely. A proportion of the Calendars are also sold in the Shop, some by mail order. We are grateful to staff of the Archives Department for their continuing assistance in providing images to complement the more modern ones and to Steve Eames for his unfailing readiness to provide these.

Newsletter

Under the editorship of Trustee Jan O'Neill (right), the Newsletter is an effective way of keeping in contact with members and volunteers. Issues 2 and 3 have appeared during the year and have featured a wide range of topics, including significant grants made to the Hospital, updates on progress with the new Shop, Trust news, volunteer profiles, Guild members' news – and, not to be omitted from the list, erudite articles by our Guild Chairman on various aspects of Barts' history. We were very pleased when the Trust Chairman, Sir Stephen O'Brien CBE, commented that 'Barts Guild News is excellent'!



Website

Keeping the website up to date is a constant challenge and we are very grateful to Amy Cupitt, our departing Administrator, for her efforts in this regard; the responsibility has now been taken over by her successor, Helen Cooper, and we are also very grateful to Claire Davies, a Guild volunteer, for her valuable help in this. The site is generally well received by our members, but we are conscious that a proportion of them do not have internet access so that we cannot rely on this as a sole means of communication.

Events

Christmas Concert



[Photo courtesy of Christopher Ellis]

In December the Guild once again held its 'Celebration of Christmas' concert of seasonal music and readings, this time with singers from the Barts and The London Music Society conducted by Matthew Hardy, with actors Janie Booth and Andrew Jarvis. We were particularly pleased to welcome the choir of students and staff of the School of Medicine and Dentistry who gave a successful and memorable performance, and grateful to Music Society President Joe Batson-Moore for encouraging them to support the Guild. We record our thanks too to the actors who gave their services free of charge, to our sponsors Saunderson House Limited and Hogan Lovells International, and to Jan O'Neill for master-minding the whole event.

Christmas Fair

Early November may seem a little premature for a Christmas Fair, but ours was held very successfully (and profitably) at that time, through the joint efforts of Shop Organiser Christine Ashby and the Trust's Barts Volunteer Co-ordinator Sarah Yandell with assistance from colleagues of Lloyds Banking Group. Guild stalls together with a contribution from Lloyds Banking Group raised over £1,600 from the event in Barts Great Hall, which was very well attended despite miserable weather.

Lord Mayor's Show

Once again Guild volunteers were a presence in the Lord Mayor's Show on 9 November, complete with a TV appearance and short explanation of the Guild's work. Mrs Ann Toms, who had come from Scotland for many years to help Mrs Wendy Mead in co-ordinating the Guild's participation, had relinquished this role, and the Chairman had expressed our thanks to her, before we learned of her death in July 2014.

[Photo courtesy of Malcolm Crisp]



Volunteers' party

Again Christine Ashby and Sarah Yandell were prime movers in putting on a post-Christmas party in January for volunteers, to thank them as Sarah said 'For all your continued hard work. I am inspired by the commitment, dedication and enthusiasm of our volunteers on a daily basis'.

[Photo courtesy of Malcolm Crisp]



Helpers' Tea

This event was held in national Volunteering Week in June. The guest speaker was Steve Eames, Construction Project Manager at Barts, who gave an update on the major building developments which had been taking place at the Hospital. The construction work, he explained, was on time and to budget, and the first handover of a completed area was due to take place on 10 July; thereafter there would be a weekly handover of another completed part of the King George V building. The Trust would then commence its clinical commissioning, which would take about two months, during which time furniture and computers would start to arrive.

The new building was scheduled to be open for business on 1 September 2014, with one of the first areas to become fully operational being the MRI scanners of Cardiac Imaging on the second floor.

At the same time, the Hospital's iconic Square had been undergoing refurbishment, a project which had involved the importation from China of around 2,500 square metres of silver grey flame-textured granite of various shapes, sizes and thickness. The work had started in September 2013 and was completed at the end of April 2014, and had involved some fifteen men in digging, drainage and duct installation, paving build up, granite and York stone paving and soft landscaping.

"... always ready to lend a hand (or a pair of feet) when needed ..."

Barts Hospital has about two hundred volunteers, around half of whom are active volunteers of the Guild. Events for volunteers are a way of expressing appreciation to all those who give their time for Barts. As Guild President Mrs Ann Wickham said at the 2013 AGM, 'They are a very special group of men and women; dedicated, loyal, hard-working ... and always ready to lend a hand (or a pair of feet) when needed.'

Grants

Grants to the Hospital for equipment and amenities totalled some £30,000 over the course of the year, including sums agreed but not spent in the previous year for grants cited in last year's Annual Report. In addition the Guild contributed £10,000 to the costs of the new Shop as mentioned above. We are grateful to Malcolm Crisp for his continued part in collecting and presenting grant applications. However, the Guild has continued to experience some difficulties in obtaining timely invoices for equipment purchased through the Trust and we hope to find a way of streamlining the process from the point at which approval is given to a request from a ward or department.

Grants included a DVD player installation in an MRI scanner (almost £12,000) to make the scanning process more comfortable for patients who become anxious during it; bedside fans; wheelchairs; microwave ovens; television; computer laptop, and other equipment.

A grant for Art Therapy equipment was enabled by a generous donation from Mrs Jo Matthews in memory of her parents, Alf and Joyce Falk, her father having worked in the Medical College for fifteen years and subsequently as a volunteer in Barts wards and Museum.

£1,300 was spent on gifts for Barts inpatients at Christmas. Hogan Lovells International also kindly selected and donated presents to be included as part of the Guild's gifts.

[Photo by Malcolm Crisp showing parcel wrappers about to start work]

Work is in hand to provide commemorative plaques to be placed on equipment donated by the Guild.

A full list of grants awarded is shown in the Notes to the Annual Accounts.



Legacies and sponsorship/donations

If the sale of a property is effected as expected, Guild funds will benefit significantly from a bequest by Ruth Nellie Fiorentini.

The Guild has profited greatly from our ongoing relationship with sponsors Saunderson House Limited, Hogan Lovells International and Lloyds Banking Group, all of whom have supported us with grants and/or gifts in kind, for which we remain very grateful.

A Commemoration Sub-committee has been instituted with a view to identifying ways in which larger gifts to the Guild can best be recognised; for example, by linking them to specific grants to the Hospital.

Obituary

The Guild was sorry to learn of the death in July 2014 of Mrs Ann Toms, a Guild member and former volunteer who was a great Barts supporter and had until recently organised the Guild's entry in the Lord Mayor's Show on behalf of Mrs Wendy Mead, travelling from Scotland to do so. She had also been an active supporter of the Save Barts Campaign when the Hospital was threatened with closure in the 1990s.

Committee of Management

The Committee started the year with a new Vice-Chairman, Mr (now Sir) Marcus Setchell, replacing Mrs Wendy Mead CC whose term of office had expired. Miss Niamh Whelan joined the Committee, whilst Mr Jay Devram resigned because of an overseas posting. Mr Steve Bench had not wished to be re-nominated at the expiry of his first term; his enthusiastic and dedicated input in many aspects of Guild activity, but particularly in the work of the Souvenir Shop, has been missed.

The Committee has continued to delegate some detailed discussions to sub-committees (for example, Publications and Publicity) and to less formal groups. In addition to its five scheduled meetings during the year, the Chairman held an informal discussion following the May meeting, at which a range of general matters was discussed, from ways to encourage Guild membership to the desirability of more systematic grant-giving.



Honorary Treasurer Michael Hayden, having indicated his wish to step down, very helpfully continued in his role whilst a successor was sought. A job description was drawn up and publicised and in April the Guild was delighted to nominate Susan Bunn (left), who had been working as Assistant Clerk to the Worshipful Company of Tallow Chandlers overseeing the Livery Company's financial affairs, as Treasurer-elect. She is a Fellow of the Institute of Chartered Accountants and holds a Diploma in Charity Accounting. The Chairman said, 'Susan has impressive experience and expertise, particularly in the charities sphere, of the kind that will be of great support to the Guild.' At the same time, the Committee is aware that this is an onerous responsibility and that some assistance with book-keeping may need to be provided at an agreed future point.

In the spring the Trust Volunteer Co-ordinator for Barts, Sarah Yandell, took up a secondment elsewhere within the Trust. We shall miss her enthusiasm and energy which have been a great support to the Guild.

Former Honorary Secretary Jackie Roe has continued to oversee the Princess Alice Garden most effectively. She is seen here (right) in the Garden with Newsletter editor Jan O'Neill.



Finally, a change of personnel in the Guild office: Amy Cupitt, who has been a great support to the Guild, particularly in developing the website and keeping it up to date, has left for pastures new – and married life. We wish her every happiness. We have welcomed Helen Cooper (left) as her Administrator successor, now working two days a week, and are very pleased to have her calm and competent presence. At the same time, very many thanks are due to Philip Moss and to Guild volunteer Claire Davies who have both kindly given time to guide Helen through the complexities of the Guild's IT requirements, including the website.



[Photos by Sue Boswell]

The Chairman writes

All of those who work with the Guild – either as trustees, volunteers or subscribing members – view it as a rather special charity, a charity of fine purpose, with a resonant century-old history and an important future.



Many people of different persuasions regard Edmund Burke, the 18th century political and social philosopher, as an inspiration. Two of his beliefs are renowned. First, his veneration for 'the little platoon we belong to in society' that supports intensely what it holds dear, be it family, causes, institutions: maybe a school, university – or a hospital! – that lays claim to our 'public affections'. In this there is echo, too, of Oliver Cromwell's 'plain russet-coated captain that knows what he fights for, and loves what he knows'. Second, his insistence that a contract exists across the generations, between the living old and young but with memory of the dead and foresight for the unborn. We have a profound obligation not only to pass on what we think vital or important to younger hands but also to bequeath it in fine – and better – state. Burke saw this as the golden thread that binds society and time.

So, he would approve fully of the Guild of Barts Hospital! For a century it has helped the sick and distressed as well as the staff of this great Hospital that ministers to them, renewing its volunteering and seeking to enlarge its commitment as the decades pass. That's why it's such an honour to be Guild Chairman and to be a trustee custodian – if only for a brief period together with fellow trustees with whom it is a pleasure to work – of a charity that has proved its resonant worth as a 'little platoon' time and again during four generations. But every member of the Guild is important. And most important of all are those who serve patients in the wards, work in the shops and support actively in other ways. They are the heartbeat of the little platoon. WB Yeats's poetry captures magisterially their generous spirit 'The people of Burke and of Grattan/That gave, though free to refuse ...'.

Well, you may be saying, some historical context is interesting and a touch of romance attractive, but what has been the progress on the ground in 2013-14?

"... an excellent prospect of increased earnings adding to our ability to plough even more money back into Barts via services and grants"

We shall have a new shop before the end of 2014, combining the present general and souvenir shops. Barts Health NHS Trust and Capital Hospitals Ltd (CHL) – managing the Public Private Partnership (PPP) major construction project – have been greatly helpful in enabling this. This will be in a good central location in the 'southern' new building rising behind the King George V block façade. It will include proper storage space (and for ward trolleys), bid fair to serve a much more populous custom than presently in the emptying Outpatients Department, and will aspire to a seven-day service. This gives an excellent prospect of increased earnings adding to our ability to plough even more money back into Barts via services and grants.

Such is the financial pressure on the Trust that the Guild has now paid a significant sum towards the shop's fitting-out and installation. Like Martin Luther, we 'can do no other'. Barts patients, their families, and staff need a shop. Working closely with the Trust and CHL, the Guild will provide it – as welcoming and attractive a one as we can and with the friendly faces and reassuring smiles that are Guild hallmarks. Our Shop Organiser, Christine Ashby, has been assiduous in helping bring about this shop plan, liaising with Trust colleagues and cogently setting out and pressing our needs. It is also tribute to the enthusiastic endeavour of Barts Volunteer Co-ordinator, Sarah Yandell, who sadly for us has now left for a secondment elsewhere in the Trust, that we now have almost 100 active volunteers, making the new Sunday ward trolley service possible and assuring good future staffing for the new shop.

The Guild's total membership, 'active' or not, stands at a little over 200. It is desirable that we increase this, although we don't derive our income's lifeblood from subscriptions. However, a growing charity is an increasingly resilient and confident one and an influx of younger members too helps fuel a strong future and brings new energy and a fresh eye to our work. We should consider before long a larger coordinated membership drive(s). Ideas about how we might set this, or these, in train will be most welcome. Might we be looking, for example, at arranging more events, including talks, to interest and attract members?

Communication and publicity offered by our website and by *Barts Guild News* – which have both been complimented on their quality and not just by Guild and Trust sources – can aid in attracting and keeping members. As a membership aspect too we are seeking, and beginning, to encourage some younger trustees who could be with us in one role or another for years to come: reinforcing the Guild's seamless purpose across Burke's 'silent moments of time'.

Through recent (and possible future) events we have begun to forge some links with students in the Barts and The London School of Medicine and Dentistry. Not that we expect them, hard-pressed for money and in their studies, to give their time to the Guild. But, when evoked in younger days, interest in a charity with a fine purpose can then last a lifetime.

"... interest in a charity with a fine purpose can then last a lifetime ..."

In the last year or so the Guild has received gratifying financial or in-kind support from – especially – Lloyds Banking Group, Hogan Lovells International and Saunderson House Limited. We aim to build on this and explore further pathways of corporate support between charity and companies so that, for example, we might augment money grants to the Hospital. This exploration with outside institutions, however, would march in step with efforts of other Barts and Trust-related charities and not compete in any way with them.

Overall finances permitting we aim to grant at least £30,000 a year to the Hospital, so needed in this time of travail for the NHS – indeed, more, given increasing shop income. At the same time we are interested to examine sharing co-operative grants with other Barts charities to meet Hospital bids that are beyond the treasury of one giver.

"... we aim to grant at least £30,000 a year to the Hospital, so needed in this time of travail for the NHS ..."

The challenges and structures of the NHS will surely ebb and flow across time, many financial straitjackets are always with us, medicine advances constantly – and technology changes vastly, but human nature doesn't. In 2013 Barts Hospital was 890 years old and the Guild, its helper and friend, 102 – both built to last. For much of the past 100 years HRH The Duke of Gloucester's family has been among the Hospital's and Guild's foremost supporters. As we enter our second century the Guild is in confident mood and continues what it has long done so well. I think the spirit that Edmund Burke impressed upon the House of Commons one February day in 1780 – 'Individuals pass like shadows; but the commonwealth is fixed and stable' – holds good for the Guild's mission and strength, today and tomorrow.

Andrew Phillips

Adapted from the Chairman's letter to Guild members, September 2013

Guild Members and Volunteers 2014

Miss Syeda Ahmed
 Mrs Caroline Allington
 Mrs Gillian Anderson
 Miss Alex Angeloudes
 Miss Mary Armstrong
 Mr & Mrs J Aspinall
 Ms Hanna Ayele
 Mrs Marjorie Ayers
 Mr Alexander Badenoch
 Miss Sheelagh Bailey
 Mr Rodger Ball
 Miss Anna Barnfield
 Miss Margaret Bates
 Miss Rosalind Bax
 Mrs Sue Bax
 Mr Stephen Bench
 Mr Leslie Berry
 Mrs Valerie Besser
 Dr David Best
 Mrs Louise Biggs
 Mrs Ann Blackledge
 Mrs Sue Boswell
 Mrs Helen Boulton
 Mrs Pat Bourne
 Mrs Margaret Brazier
 Mr Garry Brooks
 Mrs Janet Brown
 Ms Susan Bunn
 Mr Gabriel Burchell
 Dr Andrew Burnett
 Mrs Rita Buttigieg
 Mr Lawrence Carter
 Ms Jane Carey-Harris
 Lady Aileen Chalstrey
 Mrs M L Clark
 Mrs Elizabeth Cleaver
 Mrs Cynthia Cobley
 Mrs Janet Coldstream
 Mr Patrick Coldstream
 Miss Madeleine J Craggs
 Mrs Elizabeth Crisp
 Mr Malcolm Crisp
 Mrs Saima D'Adam
 Mrs Catherine Davies
 Ms Claire Davies
 Lady Pam Davis
 Mrs Kate Dawson
 Miss Juliana Delmi
 Mrs Muguette Demanuele
 Mr Jay Devram
 Mrs Elizabeth Dickinson
 Mrs Pearl Doyle
 Mrs Jenny Edmonds
 Mrs E M Escombe
 Mrs Meng Evans
 Mrs Gillian Evansky

Mrs Hilda Fazzani
 Mr John Fell
 Miss Alison Fenwick
 Mrs Sadie Ferris
 Mrs Anthea Finn
 Mr Geoffrey Finn
 Mr David Frank
 Miss Sandra Gann
 Mrs Patricia Gardner
 Miss Jennifer Gaze
 Ms Patricia Gillen
 Mrs Margaret Gillett
 Miss Lorna Glace
 Mrs Rosemary Glover
 Mrs Josephine Gough
 Mr Michael Gough
 Mrs Jane Graham
 Miss Dee Grandison
 Miss Eleanor Green
 Miss Barbara Griffiths
 Mrs Elsie Halsey
 Mrs Eileen Hamer
 Mrs Daphne Hamilton-Fairley
 OBE
 Mrs Sylvia Hampton
 Mrs Amanda Handley
 Ms Chris Harocopos
 Miss Zahira Hassan
 Mr Michael Hayden
 Miss Margaret Hazard
 Mrs Margaret Henry
 Mrs Pauline Hirst
 Miss Hilary Hiscocks
 Professor Sir Deian Hopkin
 Professor Chris Hudson
 Mrs Mary Hunter
 Mrs Sifa Igilima
 Miss Farzana Irani
 Miss Chris Jacques
 Miss Olive James
 Mr Patrick Jennings
 Mrs Jayne Jennings
 Mrs Jenny Jeyarajah
 Mr Arjun Jeyarajah
 Ms Annwen Jones
 Mrs Joan Johnson
 Miss Gloria Jones
 Ms Jelena Karklina
 Dr Ian Kelsey Fry
 Mrs Mary Kelsey Fry
 Ms Stephanie Kerstein
 Mrs Jane Keyes
 Miss Alison Knapp
 Mrs Patricia Kraft
 Ms Eleonora Kupryte
 Mrs Elaine Law

Miss Lesley Lawson
 Miss M A Lennon
 Mrs Patricia Lettin
 Mrs Sarah Lister
 Miss Jane Lloyd
 Mrs Wendy Lloyd-Bailey
 Miss Valeria Locatelli
 Mrs Sybil Love
 Miss Valerie Luxton
 Mr Daniel McFall
 Miss Frances McHugh
 Mrs Pat McHugh
 Mrs Mary McNab Jones
 Mrs Debbie Mac Ho
 Mrs Joyce Malpas
 Mrs Susan Mason
 Mrs Wendy Mead CC
 Mr David Mears
 Ms Sally Mears
 Ms Jakki Mellor-Ellis
 Mrs Elizabeth Morgan
 Miss Jean Morris
 Mrs Pamela Nash
 Mrs Jean Nathan
 Mrs Joan Nichol
 Ms Emilia Nikroo
 Mr Luke Oates
 Mrs Margaret Oates
 Miss Elizabeth Oliver
 Ms Jan O'Neill
 Mrs Barbara Pare
 Miss Sabeeha Patel
 Mrs Saroj Patel
 Ms Lynne Peabody
 Dr Andrew Pembroke
 Dr Jacqueline Pembroke
 Lady Judy Percival
 Mrs Jeanette Petrushkin
 Mr Andrew Phillips
 Mr Edward Phillips
 Mrs Piera Piazza
 Ms Janina Pogorzelski
 Miss Molly Price-Smith
 Miss Margaret Prior
 Miss Kate Quinn
 Mrs Norah Reed
 Mrs Sylvia Reed
 Lady Ann Riches
 Mrs Angela Ringer
 Mrs Jean Ritchie
 Miss Jackie Roe
 Miss Margaret Roles
 Miss Ann Rose
 Mrs Margaret Rumsey
 Ms Deborah Russell
 Mrs Jacqueline Sanderson

Sir Marcus Setchell KCVO
 Mr William Shand
 Dr Elizabeth Shaw
 Mrs Alison Shepherd
 Mrs Carol Shepherd
 Dr Paul Simmons
 Mrs Pat Simmonds
 Mr Andrew Skeggs
 Ms Elisabeth Smyth
 Dr Elizabeth Sparrow
 Ms Jackline Staats
 Mrs Avril Stewart
 Mrs Janet Stinton

Mr Robert Stinton
 Mrs Gisela Stone
 Miss Ausura Suchodolskyte
 Mrs Clare Sweatman
 Mrs Cynthia Thompson
 Mrs Katy Tsang
 Dr Audrey Tucker
 Mrs Marjorie Twydell
 Mrs Jane Valentine
 Miss Liuda Vaus
 Miss Mary Walker
 Mrs Peggy Walsh
 Mr David Way

Dr Judith Webb
 Mrs Barbara Welstead
 Miss Niamh Whelan
 Dr Veronica White
 Mrs Ann Wickham
 Mr John Wickham
 Mr Daniel Williams
 Miss Jean Wilson
 Mr Alan Wiseman
 Mrs Margaret Helen Wyatt
 Mr and Mrs M J Wyatt
 Miss Ayesha Younis
 Miss Cecelia Yu

Friends of St Bartholomew's Hospital since 1911.

<http://www.bartsguild.org/> Promote

PHOTOS

Barts Guild has joined Facebook! Follow us for news and updates and learn about how you can get involved and support the Guild. If there is anything you'd like us to be posting about, do let us know.

Like · Comment · Share 1 Share

Boost Post

 **Barts Guild** changed their cover photo.
 Posted by Claire Davies. [?] · 6 August

Like · Comment · Share



Barts Guild Facebook page
A new way to keep in touch with the Guild

<https://www.facebook.com/BartsHospitalGuild>
or go Facebook.com and search for Barts Guild

The Guild of the Royal Hospital of St Bartholomew



ANNUAL GENERAL MEETING 2013

Minutes

of the Annual General Meeting of the Guild of the Royal Hospital of St Bartholomew held on
Thursday 10 October 2013 at 2.30pm in the Great Hall, St Bartholomew's Hospital

1 The President's welcome

Mrs Ann Wickham welcomed members and guests to the meeting including the Lady Mayoress, Dr Clare Taylor; Sheriff's wife, Mrs Angela Waddingham; Mr Marcus Setchell CVO, Chairman of the Voluntary Board; Ms Jane Canny (on behalf of Prof Kay Riley, Chief Nurse and Ms Tracey Carter, Deputy Chief Nurse); Ms Aneta Saunders (on behalf of Mr Andrew Douglas, CEO and Mr Michael Smith Chairman, Barts Charity); and approximately 50 Guild members and volunteers.

Apologies for absence had been received from Mr Peter Morris OBE, Chief Executive, Barts Health; Sir Stephen O'Brien CBE, Chairman, Barts Health; Revd David Rushton, Trust Chaplain; Mr Philip Wright, Vice-Chairman, Barts Health; Mrs Hilary Ison, wife of the Dean of St Paul's, Dr David Ison; Mr Michael Smith, Chairman, Barts Charity; Mr Fred Starling, Chairman, Friends of the London Chest Hospital; Dr Anthea McEwan, Chairman, Friends of the Royal London Hospital; Ms Lorna Taylor, Hogan Lovells International LLP; Miss Sophia Walters, Saunderson House; Mr Michael O'Brien, Chairman, Friends of Guy's Hospital; Ms Marian de la Piquerie, Chairman, Friends of St Thomas' Hospital; Ms Rowena Hughes, Chairman, Friends of King's College Hospital; Prof Maggie Nicol, President, League of Barts Nurses; Mrs Rachel Wilcox, Chairman, Friends of University College Hospital; Prof Gerald Libby, Chairman Archives Committee; Mr David Rixon, Guild Auditor; Mr Hussein Syed, Chairman, Friends of St Mary's Hospital; Mr Alastair Chesser, Chairman, Barts Choir; Ms Chandra Vansadia, Voluntary Services Lead, Barts Health; Mr Peter Droop, Chairman, Rahere Association; Ms Fiona McArthur, Client Relations Manager, Skanska UK plc; and a number of members and volunteers.

The President's Address

Can you imagine a world without music? Part of the Lord Mayor's appeal this year is for the City of London Music Foundation to help aspiring musicians in the early stages of their career. To mark the Queen's Diamond Jubilee the City of London has presented Her Majesty with a new English Chamber organ, which will be installed in Henry VIII's chapel in Westminster Abbey in November.

To celebrate our centenary last year we held a concert of Handel's Celebratory music with the Barts Choir and the Trafalgar Sinfonia. The programme included the Coronation Anthem, Zadok the Priest and the Royal Fireworks Music. Truly glorious music!

Can you imagine Barts Hospital without Barts Guild Volunteers? They are a very special group of men and women; dedicated, loyal, hard working (have you ever tried pushing a trolley?) and always ready to lend a hand (or a pair of feet) when needed. We always need more and more volunteers without which the Barts Guild patients and staff would be bereft. Not only because of the shop and trolley services, but through money-raising events and legacies we are able to supply the wards and departments with equipment not supplied by the NHS as well as other comforts from chairs to televisions. Friendship, the knowledge of doing a worthwhile job and the gratitude of these patients and staff are the benefits of being a volunteer.

But we should always remember that every volunteer, including the management committee, has a home and family to care for as well as other commitments and to cope with often frustrating travel problems, whatever the weather. Yet they still find time to serve the patients and staff of Barts with a willing smile and unlimited patience. Sir Norman Moore, President of the Royal College of Physicians, a Barts Consultant and the husband of Milicent Moore, who founded the Guild in 1911, wrote in 1918, 'A History of St

Bartholomew's Hospital' and quoted an ancient toast used at feasts and ceremonies in the hospital 'Prosperity to St Bartholomew's Hospital and ease to the poor patients'.

A toast I would endorse.

On behalf of the Guild the President thanked very much Hogan Lovells International LLP for sponsoring the Annual Report 2012-13 and Skanska Plc for funding the AGM's refreshments.

The President then introduced the Dean of St Paul's, The Very Reverend Dr David Ison, Dean since May 2012 and the 111th since 1090. She went on to remark that St Paul's Cathedral, a place for celebration, comfort, compassion and reassurance had many Barts staff supporters all of whom knew that St Paul's would always be there for them.

The talk of the Dean of St Paul's, The Very Reverend Dr David Ison, is recounted at the end of these Minutes.

Afterwards the President thanked the Dean for his most interesting, informative and insightful talk.

2 Minutes

The Minutes of the AGM held on Friday 2 November 2012 were approved as a correct record.

3 Annual Report and Accounts 2012-13

The Annual Report and Accounts 2012-13 had been circulated and were adopted.

3.1 Treasurer's Report

The Honorary Treasurer, Mr Michael Hayden, gave his report for the year ended 31 March 2013.

Although expenses had increased it was a positive sign of the Guild's increased activity and enhanced profile. Reduced income from the shop was mainly due to the continued on-site disruption caused by hospital building works. Donations and legacies were a key contributor to the funding the Guild's activities, as had been the Centenary concert which had generated a surplus of over £5,000.

The Treasurer added his thanks to Mr David Rixon for his continued support for the Guild as the examiner for the accounts.

4 Election of Officers and Committee Members

4.1 Officers

The appointment of Mr Marcus Setchell CVO as Vice-Chairman for an initial term of three years was approved.

4.2 Members of the Committee of Management

It was reported that Mr Steve Bench did not wish to be nominated for a further term and that Mrs Wendy Mead CC had completed her term of office as Vice-Chairman.

The appointment of Mrs Wendy Mead CC and Miss Niamh Whelan as Trustees for an initial period of three years was approved.

The re-election of Mrs Pearl Doyle, Mrs Jan O'Neill, Mr Patrick Jennings, Mrs Sue Boswell and Mrs Jenny Jeyarajah (Honorary Secretary) was approved.

5 Chairman's Report

The Chairman, Mr Andrew Phillips, reported as follows.

The Chairman said his AGM letter to members (reproduced in this Annual Report) was both a progress report and an expression of thanks. He thanked all volunteers and members and the Management Committee for their tremendous work and support. He was personally especially grateful for the work of the Hon Secretary and Treasurer, the Shop Organiser Christine Ashby, and the Barts Volunteer Co-ordinator

Sarah Yandell, and for the support of his predecessor as Chairman Professor Chris Hudson and of the President Ann Wickham. He welcomed the new Vice-Chairman and Committee members.

At the start of his chairmanship he had said to both the Guild's royal Patron and the NHS Trust's Chairman that his chief aims were to help 'keep the show on the road; secure a new shop; extend Guild publicity and profile; enlist more subscription, and younger, members; encourage more corporate supporters; and, increase grants to the Hospital'. His letter reflected these themes. Good progress had been made in some key areas. We were close to gaining a new shop in the Barts new building. The newsletter and website had received significant praise (articles by volunteers for *Barts Guild News* would be particularly welcome!). Grants would show an appreciable increase in the coming year. The implementation of a revised Constitution was imminent.

Potential membership drives in a competitive charity environment needed further analysis but, again, ideas from members would be very welcome. The more younger members we recruit the more we secure the continued work of the Guild – already present for four generations – through the next generation(s). Corporate supporters nowadays often replace, to an extent, wealthy individual benefactors of yesteryear's charity landscape and the Guild was already in receipt of valuable in-kind (largely) corporate support. Considerable financial pressure on the Trust meant that grants to it were ever more important and Guild grants also should be seen as assisting – even if at a comparatively modest level – the impressive fundraising and grant-giving of the Barts Charity. The prospect of co-operative grants with other charities and bodies should be explored, to increase help for Barts.

Thus the Management Committee had 'work to do' and was determined to underpin in development and initiative the continuing work, support and goodwill that our volunteers and members give with such willingness and grace to Barts' patients and staff.

6 Guild Constitution

The circulated document 'Constitution - Amended 2013' had outlined the background and *raison-d'être* of the proposed revision of the Constitution. The note 'Delay in adopting the Guild's revised Constitution', tabled at the AGM, explained the need to adjourn the AGM – before a resolution could be agreed by members – in order to comply with the current specifications and latest procedural comment of the Charity Commission.

7 Forthcoming events

Lord Mayor's Show: Saturday 9 November 2013

Christmas Fair: Wednesday 6 November, 10.45am – 3pm in the Great Hall

Christmas Concert: Thursday 5 December 2013 in the Great Hall at 7pm

AGM 2014: date to be confirmed

8 Long-Service Certificates

The Guild was delighted to welcome the Lady Mayoress, Dr Clare Taylor, to present the Long-Service Certificates to the following volunteers: Mrs Josephine Gough, Mr Michael Gough, Mrs Sue Bax and Mrs Jacqueline Sanderson; and also a letter of recognition to Mr David Frank for five years' service.

The President then invited members and guests to proceed to the Bring and Buy stall and to enjoy the drawing of the raffle tickets. She thanked all those who had been involved in arrangements for what had been an excellent meeting, in particular Mr Patrick Jennings for the raffle and silent auction, Mr and Mrs Malcolm Crisp for running the souvenir stall, Miss Jean Morris for the flowers, Mrs Pearl Doyle and other organisers of the Bring and Buy sale, Ms Patricia Gillen for her piano playing, and the Great Hall Banqueting Manager, Mrs Josephine Wellington, and her staff including Mariella.

The President and Committee also congratulated warmly Mr Steve Bench, recently a Trustee, who had raised over £2,000, via a sponsored bicycle ride the length of the UK, for the Guild.

The AGM was adjourned until 11am on Wednesday 27 November 2013 where it would resume in the Henry VIII Room at St Bartholomew's Hospital.

Afternoon Tea was served.

ANNUAL GENERAL MEETING 2013 (Reconvened)

The Annual General Meeting of the Guild, adjourned on 10 October, was reconvened on Wednesday 27 November 2013 at 11 am in the King Henry VIII Room, North Wing, St Bartholomew's Hospital

Minutes

The only substantive item on the Agenda was the adoption of the revised Constitution following full agreement, after the adjourned AGM, of the revision by the Charity Commission. The proposal was:

That the AGM is requested to endorse the revised Objects and other changes outlined; and to adopt the new Constitution.

The AGM agreed unanimously to endorse the revised Objects and to adopt the new Constitution. The AGM then closed and the membership's decision was conveyed forthwith to the Charity Commission [which confirmed and registered the new Constitution in December 2013].



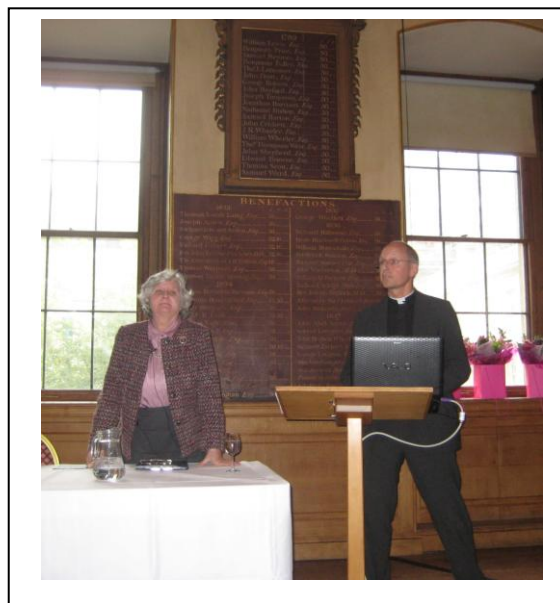
The Lady Mayoress, Dr Clare Taylor, presenting a long-service certificate to Mrs Sue Bax



Roaring trade at the Guild shop and raffle stall overseen by Sir Sydney Waterlow, Lord Mayor of London 1872-73



Volunteers Mr Michael Gough and Mrs Josephine Gough after receiving their long-service certificates from the Lady Mayoress



The President, Mrs Ann Wickham, introducing the speaker, The Very Revd Dr David Ison

AGM Photos by Malcolm Crisp and Sue Boswell

St Paul's Presentation and Talk at the Guild AGM 2013

The Dean of St Paul's, The Very Revd Dr David Ison

What do you think of or feel when you see the Dome of St Paul's?



St Paul's seen from the redeveloped King George V building at Barts
[Photo courtesy of Steve Eames]

Here are some numbers from the history of St Paul's:

- **1402**: the number of years that the cathedral has held land at Tillingham on the coast of Essex: the longest single land ownership in British history, given to support the spiritual care of people in the kingdom of the East Saxons
- **5**: the number of cathedral buildings on Ludgate Hill: the first one in 604, which was rebuilt in stone at the end of the 7th century, burned down in 962, 1087 and 1666
- **520**: the height of the top of the spire in feet of Old St Paul's, which was the largest church building in the world after Constantine's basilica in Rome, until the building of St Peter's Rome. On the floor of the nave of St Peter's is an inscription showing the length of St Paul's nave, and calling the cathedral a 'fanum', the Latin term for a pagan shrine ('profane'). It was made so big as a kind of Canary Wharf by the incoming Normans: a giving of the best and greatest to God – would firms, governments or peoples do so now?
- **66,000**: the weight of Wren's dome in tons. The foundations are massive but not deep, because of the thick layer of river gravel on top of the underlying clay: hence there is a depth policy forbidding deep development around the Cathedral including water extraction which causes movement of the foundations. The modern cathedral continues the tradition of having a major awe-inspiring building which speaks of something much bigger than ourselves.

The dome of St Paul's Cathedral is an internationally recognised symbol of the City of London. It signifies that you're in one of the world's great multi-cultural cities; in the capital city of a proud nation with a long history, whose people resisted tyranny through two world wars; in the heart of an international financial and trading centre, sometimes too identified with the City; the dome which is used as a marker for London in fact and fiction, and used in advertising even by those who have no time for Christian faith.

All of that and more are expressed in the icon of the Dome. But I want people to start at the top, to look at the Dome and its cross – and many pictures cut the cross out – and think that this is a Christian church, where interesting things happen that anyone can be part of, because under the dome human beings encounter God in worship and in one another, mediated through this wonderful building.

Why do people come? What's St Paul's Cathedral for? The question for us as a cathedral is: what does God want us to be and do in the 21st century? In late 2013 we produced a vision statement which sets out what we believe we are for, in four sentences:



The speaker, The Very Revd Dr David Ison

- St Paul's Cathedral seeks to enable people in all their diversity to encounter the transforming presence of God in Jesus Christ.
- As a community of worshippers, staff and volunteers we work with care and imagination to be a centre for welcome, worship and learning which inspires successive generations to engage with the richness of the Christian faith and its heritage.
- We aim to do this with confidence, compassion and creativity, promoting dignity and justice for everyone.
- We work with the Bishop and Diocese of London and the wider church, as a spiritual focus for London, the nation and the world.

How do we go about doing that? Well, we have over 1700 services of prayer and worship a year, which are open to all who want to come, the great and the ordinary. We have young people's work through the choir, interesting people in music which also expresses faith. Our schools work brought in over 28,000 children last year, mainly from the East End and of all colours and creeds, to learn about their country's Christian heritage, encountering its legacy in the living heritage of the cathedral at work. We do education for adults too: the St Paul's Institute and Forum run seminars and lectures on matters of contemporary religious and social concern. And then there are many other things, such as sculpture, painting, fabrics, conservation, and engagement with contemporary artists. The cathedral's historic collections include the Dean's Library with its original panelling and leather-bound books, and the amazing 340 year old Great Model of the building which Wren planned but was not allowed to build.

But at the end of the day, from the bottom of the Crypt to the top of the Golden Gallery above the dome, it's all about people: how they can come and be inspired by the people of past and present, and be transformed by the presence of God in this place.

What are we aiming to do over the next five to ten years to achieve our vision of enabling people to encounter God in Christ? Our strategic plan sets out 38 things we want to achieve, with a lot of detail; and we are getting organised to make these happen.

The key features of our plan are rooted in history. A major concern is how we welcome people in a way which enables them to discover not only the building but also the purpose for which it was built: to speak to people of God as seen in Jesus Christ. As a big building, we are good at evoking awe and wonder: but how do we enable encounter and silence, for over 1.5 million visitors and worshippers per year? Here are a few important headlines from our strategic plan:

- The fabric, the building, as well as the worship have a spiritual purpose, and we want to highlight this. This will involve making the cathedral a more prayerful space, and in particular taking out ticket sales from the back of the cathedral. We also want to undertake a feasibility

study with partners including the City Corporation and city churches for a possible advice centre near the cathedral to help those of our visitors who need assistance. We will renovate our heritage of the Library and the Great Model, and put our historic collections on line, relating our heritage to the Christian faith.

- Working with people and issues: we need to improve our toilets, including making them more sustainable by installing rainwater capturing and solar water heating. Disability access needs improving, and we will finish the process of installing ramp access to the north porch. We intend to improve our pastoral and spiritual care for visitors and staff; we will also increase resources for the St Paul's Institute, including raising money for a full-time Director who can make our support for financial ethics more effective. We will also develop our education work with outreach in mind, e.g. supporting training of religious education teachers and drawing in secondary and tertiary students in partnership with educational institutions.
- One of our aims is: 'To be a London cathedral which expresses the diversity of the metropolis'. This will mean, for example, special services for other than mainly white groups, and having youth events in the cathedral, in partnership with diocesan youth workers, as well as working for greater social cohesion through education.

Through the history of St Paul's, there has been a recurrent theme of renewal – in Latin, Resurgam, the word which Sir Christopher Wren literally picked up on a broken bit of tombstone – as the community around the cathedral has got back in touch with its Christian roots and purpose.

A good example was the Victorian agenda to turn a national monument into a living church relevant to its own time, a process begun by Dean Milman and consolidated under Deans Richard Church (1871-90) and Robert Gregory (1890-1911): they were not individually famous like John Donne, but unlike him they engaged with the building and its use. The book *St Paul's in its Glory* by the mid-twentieth century academic canon GL Prestige describes the appearance of St Paul's in 1831 when the reforming canon and wit Sydney Smith was appointed canon:

'In those days the two most conspicuous features of the Cathedral were its vast emptiness and its encompassing dirt, of which London was full ... A solid screen cut off most of the chancel from the remainder of the church, and this enclosed portion holding at most a few hundred worshippers was alone regularly used for divine service ... The area under the dome, together with the transepts and the nave, presented an echoing void ... The impressiveness of the marble waste can only have been strengthened by glimpses of the superhuman effigies of Nelson's captains and Wellingtons' generals lurking behind iron railings.

'Cold entered everywhere as freely as dirt, and there was no system of general heating. "To go to St Paul's", wrote Sydney Smith in November 1833, "is certain death. The thermometer is several degrees below zero. My sentences are frozen as they come out of my mouth, and are thawed in the course of the summer, making strange noises and unexpected assertions in various parts of the church." '

An interior view of the cathedral in 1852 shows no chairs, no mosaics, and just a few people strolling down the nave. Nonetheless, people still came to church, then as now for music as well as prayers.

It was however a different story by 1911. The screen had been taken down and the organ divided, windows glazed to keep out the dirt, heating installed in the crypt with gratings to heat the cathedral, chairs put in and the nave opened up to become part of the chancel church, mosaics had beautified the east end, the choir and clergy had been reformed and were effective and hard-working, and services attracted thousands not just hundreds.

On the other hand, the cathedral had also lost much of its through agricultural inflation and the loss of their assets to the Church Commissioners, and were about to spend the equivalent of millions of pounds on repairs to cracks in the dome and its pillars caused by tunnelling and other movement, making St Paul's relatively poor and having to rely more and more on charging – but that's the 20th Century story.

And what of the 2010s? After the great fundraising effort 1995 to 2010 which has left St Paul's cleaned and beautified: how do we continue the process of making a national monument, which is now more used than ever before in its history for worship, special services and visits, into a place of living Christian heritage? Our strategic plan is not revolutionary in the way that the Victorians were. But we do aim to do all that we can to make the cathedral fit for its purpose of being, in the words of a post-war guide-book title:

'Everyone's St Paul's – your surprising place for London'.



Photo courtesy of Steve Eames

**St Paul's
with the new Barts building
for cancer and cardiac services in the foreground**

Report of the Honorary Treasurer

Report of the Honorary Treasurer for the year ended 31 March 2014

The Guild generated £79,295 income during the year.



Sales in the Guild's shop of £65,070 show an increase of four per cent over the previous year, despite ongoing disruption due to hospital building works. The increase in sales reflects the hard work and commitment of Christine Ashby, our Shop Organiser, and her team of volunteers to encourage visitors to the shop and to serve patients and staff throughout the year. The Shop suffered a total loss of £11,423 during the year. The prime and much more populous location of the future shop in the new King George V building should increase shop sales considerably.

Donations and Legacies totalled £8,528.

Events and other fundraising activities yielded a surplus of £1,787. The Guild Calendar is primarily a gift to the Hospital and proves popular in its wards and departments. To date the intent has been to sell very approximately 25% of copies, adding to funds. The Calendar also promotes the Guild and its continuing work among Barts and the NHS Trust's staff and patients and our supporters generally. Administration expenses for the year were £39,679 an increase of £4,534 over the previous year. The increase is principally due to the legal costs associated with developing the new constitution for the Guild.

"The increase in [shop] sales reflects the hard work and commitment of Christine Ashby ... and her team of volunteers"

Grants totalling £41,642 were paid during the year, an increase of £37,985. The increase reflects the payment of some grants approved in the previous year and a general increase in grant activity during the current year.

Total assets of the Guild at the end of the year were £382,311.

Our thanks go to David Rixon who has carried out the independent examination of the accounts, as required by the Charity Commission. After many years of service as Independent Examiner David is stepping down from the role. I would like to express the Guild's sincere thanks to David for all of his support over the years. The Guild will look to appoint a new Independent Examiner during the year.

Michael Hayden

Honorary Treasurer

Independent examiner's report to the trustees of the Guild of the Royal Hospital of St Bartholomew

I report on the accounts of the Guild for the year ended 31 March 2014.

Respective responsibilities of trustees and examiner

The charity's trustees are responsible for the preparation of the accounts. The charity's trustees consider that an audit is not required for this year under section 144(2) of the Charities Act 2011 (the 2011 Act) and that an independent examination is needed.

It is my responsibility to:

- examine the accounts under section 145 of the 2011 Act;
- to follow the procedures laid down in the general Directions given by the Charity Commission under section 145(5)(b) of the 2011 Act; and
- to state whether particular matters have come to my attention.

Basis of independent examiner's report

My examination was carried out in accordance with the general Directions given by the Charity Commission. An examination includes a review of the accounting records kept by the charity and a comparison of the accounts presented with those records. It also includes consideration of any unusual items or disclosures in the accounts, and seeking explanations from you as trustees concerning any such matters. The procedures undertaken do not provide all the evidence that would be required in an audit and consequently no opinion is given as to whether the accounts present a "true and fair view" and the report is limited to those matters set out in the statement below.

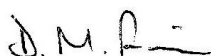
Independent examiner's statement

In connection with my examination, no matter has come to my attention:

- (1) which gives me reasonable cause to believe that in any material respect the requirements:
- to keep accounting records in accordance with section 130 of the 2011 Act; and
 - to prepare accounts which accord with the accounting records and comply with the accounting requirements of the 2011 Act

have not been met; or

- (2) to which, in my opinion, attention should be drawn in order to enable a proper understanding of the accounts to be reached.



David Rixon
90 Lucas Avenue
Chelmsford
CM2 9JW

17 July 2014

The Guild of the Royal Hospital of St Bartholomew
Detailed Statement of Financial Activity
All Funds Year Ending 31 March 2014

	Notes	Unrestricted Funds £	2013/14 Restricted Funds £	Total £	Unrestricted Funds £	2012/13 Restricted Funds £	Total £
Income and Expenditure							
Incoming resources							
Donations and Legacies	1	8,528.03		8,528.03	32,679.72		32,679.72
Subscriptions		2,478.00		2,478.00	2,170.50		2,170.50
Shop Sales	2	65,070.00		65,070.00	62,274.40		62,274.40
Gift Aid		-		-	643.23		643.23
Events and Fundraising Activity	3	1,787.20		1,787.20	2,929.43		2,929.43
Other Income	4	1,431.34		1,431.34	2,801.11		2,801.11
Total Incoming Resources		79,294.57	-	79,294.57	103,498.39	-	103,498.39
Resources Expended							
Grants paid to St Bartholomew's Hospital	5	41,642.25		41,642.25	3,657.18		3,657.18
Stock Purchased	6	48,542.35		48,542.35	42,196.23		42,196.23
Administration	7	39,679.38		39,679.38	35,145.45		35,145.45
Total Resources Expended		129,863.98	-	129,863.98	80,998.86	-	80,998.86
Net incoming (outgoing) resources	-	50,569.41	-	50,569.41	22,499.53	-	22,499.53
Fund Balances as at 1st April 2013		412,688.89	20,191.88	432,880.77	390,189.36	20,191.88	410,381.24
Fund Balances as at 31st March 2014		362,119.48	20,191.88	382,311.36	412,688.89	20,191.88	432,880.77

Balance Sheet as at 31 March 2014

	Notes	31st March 2014		31st March 2013	
		£	£	£	£
Fixed Assets					
3.5% War Stock at introduction value			105.00		105.00
Current Assets					
Shop stock	8	10,008.50		11,222.06	
Cash at bank and in hand	9	375,051.98		434,826.88	
		385,060.48		446,048.94	
Less: Current liabilities	10	2,754.18		13,273.17	
Net Current Assets			382,306.30		432,775.77
Total Fixed and Net Current Assets			382,411.30		432,880.77
Fund of the Guild of the Royal Hospital of St Bartholomew					
Restricted			20,191.88		20,191.88
Unrestricted			362,119.48		412,688.89
			382,311.36		432,880.77

Approved by the Trustees on 17 July, 2014 and signed on their behalf :

A.B. Phillips

Michael Hayden

Andrew Phillips
Trustee

Michael Hayden
Trustee

NOTES TO ACCOUNTS**1. Donations and Legacies****£**

Legacies	-
Donations	8,528.03
	<u>8,528.03</u>

2. Shop Sales

Guild Shop	61,321.16
Souvenir Shop	6,656.38
	<u>67,977.54</u>
Less: VAT payments	2,907.54
	<u>65,070.00</u>

3. Events and Fundraising Activity

Revenue from events and other fundraising initiatives*	7,456.02
Less: Cost of fundraising activities	2,596.07
Less: Cost of Calendar [#]	3,072.75
	<u>1,787.20</u>

* Includes sponsorship of the Christmas Concert by Saunderson House Ltd.

[#] Approximately 60% of the Calendars now form a free gift, or grant, to the Hospital**4. Other Income**

Income on War Stock	10.50
Bank Interest	1,420.84
	<u>1,431.34</u>

5. Grants paid to St Bartholomew's Hospital

Bedside fans for patient care and comfort	527.74
TV for patients	126.00
Microwave	119.99
Princess Alice Gardens upkeep	160.94
New Guild Shop fitting contribution	10,000.00
Renal Commemoration Contribution (audio system hire)	266.52
Laptop and other equipment	460.11
Platelet analyser (+ Tests) for cardiac purposes	9,000.00
Cardiology grant	500.00
Pain Clinic (acupuncture) - Electro moxator	792.30
Christmas gifts for inpatients	1,308.65
DVD player equipment for fitting and use with MRI Scanner	11,960.00
Wheelchairs	3,600.00
Art therapy equipment	2,820.00
	<u>41,642.25</u>

6. Stock purchased

Opening stock 01/04/2013	11,222.06
Stock purchased	47,328.79
	<u>58,550.85</u>
Less: Closing stock 31/03/2014	10,008.50
	<u>48,542.35</u>

7. Administration

AGM	595.16
Travel	1,953.43
Postage, Printing and Stationery	445.44
Salaries	27,950.83
Administration Costs (fees paid to Guild Administrator)	3,662.50
Legal Fees	3,882.00
Telephone	171.02
Website	234.00
Insurance	785.00
	<u>39,679.38</u>

8. Shop stock

Guild Shop	3,298.43
Souvenir Shop	6,710.07
	<u>10,008.50</u>

Stock is valued at 67% of retail value

9. Cash at bank and in hand

Nat West	25,381.31
COIF deposit account	336,155.76
COIF life membership account	1,800.28
HSBC - Guild Shop account	5,288.53
HSBC - Souvenir Shop account	4,912.10
Shops cash floats	1,514.00
	<u>375,051.98</u>

10. Current Liabilities

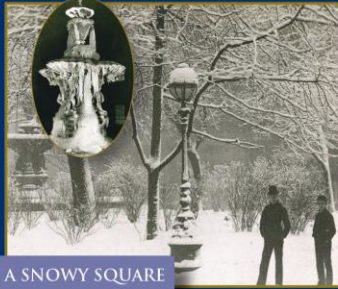
Shop creditors	2,122.27
VAT	631.91
	<u>2,754.18</u>

2015

BARTS GUILD *Calendar*



JANUARY



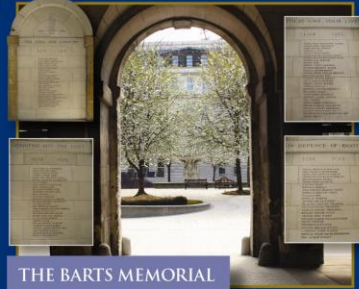
A SNOWY SQUARE

FEBRUARY



RAPID ARC

MARCH



THE BARTS MEMORIAL

APRIL



BARTS IN WORLD WAR I

MAY



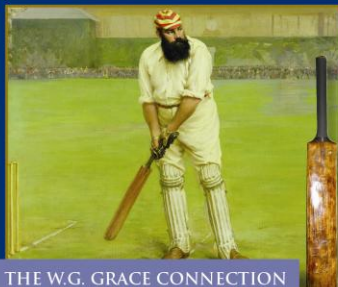
SCIENCE AND TECHNOLOGY
IN PATIENT CARE

JUNE



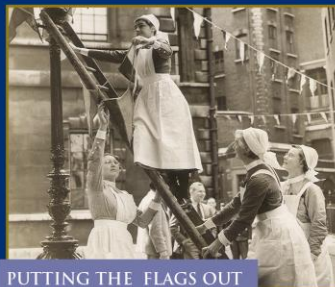
THE REDEVELOPMENT OF THE SQUARE

JULY



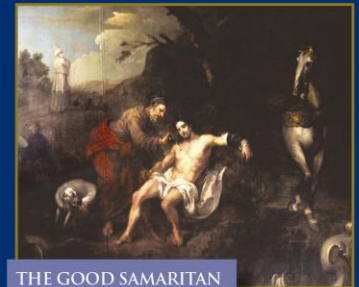
THE W.G. GRACE CONNECTION

AUGUST



PUTTING THE FLAGS OUT

SEPTEMBER



THE GOOD SAMARITAN

OCTOBER



A STUNNING DEVELOPMENT

NOVEMBER



THE GUILD CHRISTMAS CONCERT

DECEMBER



CHRISTMAS CHEER FROM
THE BARTS GUILD



BARTS GUILD

4th floor, Gloucester House
St Bartholomew's Hospital
London EC1A 7BE

Telephone: 020 346 56015

Email: bartsguild@aol.com

Contact Telephone numbers

Guild General Shop 020 346 56382

Shop Organiser 020 346 56382/07948 538612

Souvenir Shop 020 346 56844

Volunteer

Co-ordinator 020 346 55819

www.bartsguild.org

